

Holland Gardens, TW8

£450,000

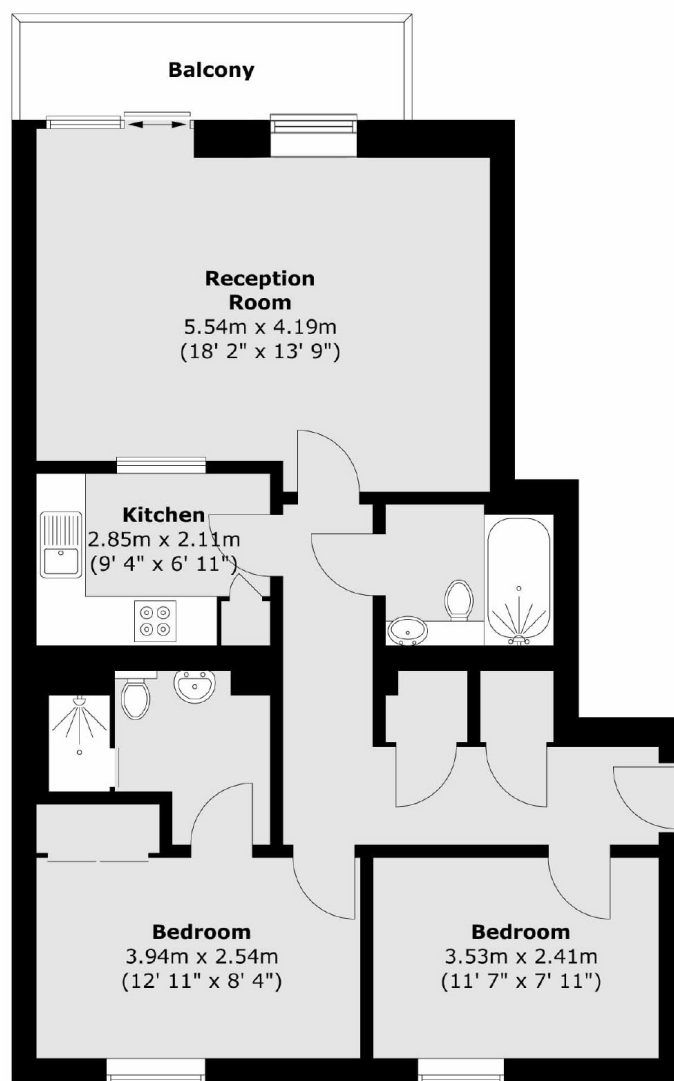
This modern and spacious two bedroom, two bathroom apartment is set on the third floor within the gated Holland Gardens development. The principle bedroom is designed with built in wardrobes and a newly refurbished en suite bathroom. The semi-open kitchen and living room are bright from the large south facing balcony, which faces the River Thames with Kew Gardens in the distance. The apartment comes with designated underground parking with lift access, a 24 hour concierge service and a residents gym, spa and gardens.

Holland Gardens is a modern gated development facing down to the River Thames, approximately 0.4 miles to Kew Bridge Station and providing easy access in and out of London via the A4 and M4.

Features

- Third Floor
- Two Double Bedrooms
- Two Bathrooms
- South-Facing Balcony
- Allocated Parking
- 24 Hour Concierge Service

Holland Gardens, Brentford, TW8



Total area (approx.) : 73.9 sq. m (795 sq. ft)
Total balcony area (approx.) : 5.7 sq. m (62 sq. ft)

Dexters

Chiswick
388 Chiswick High Road
London
W4 5TF
Sales
020 8995 4321

Energy Rating: B. We aim to make our particulars both accurate and reliable. However they are not guaranteed; nor do they form part of an offer or contract. If you require clarification on any points then please contact us, especially if you're traveling some distance to view. Please note that appliances and heating systems have not been tested and therefore no warranties can be given as to their good working order.

 **RICS** | Regulated
Estate Agent
and Letting Agent

[dexters.co.uk](https://www.dexters.co.uk)