



**HUNTERS**<sup>®</sup>

HERE TO GET *you* THERE



6



2



1



C

# Sparkford Close, Winchester

## Offers In Excess Of £450,000



This is a 6 bedroom student accommodation investment opportunity within walking distance to the university.

We are pleased to present this six bedroom student house in Winchester. The property comprises entrance hall, kitchen, living room, bathroom, shower room plus a additional toilet, five double bedrooms, single bedroom and utility area. There is double glazing, gas central heating and an HMO License for six people.

Externally, the property includes a rear garden and off road parking for four cars.

A large Sainsburys supermarket is located in Badger Farm, as well as local shops in Stanmore just a short walk away, providing a most pleasant setting for tenants to live during their education.

The property is currently let until 06/08/2026 at a rent of £3,300.00 pcm with renewal agreed until 06/08/2027 at £3,465.00

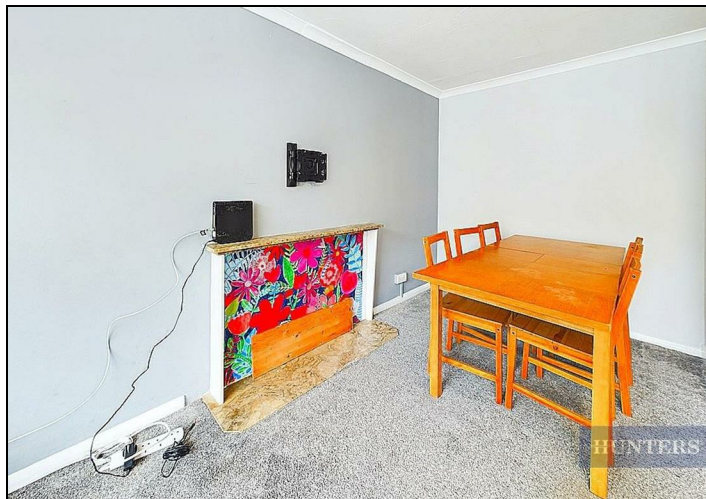
Additional Information/ Notes:

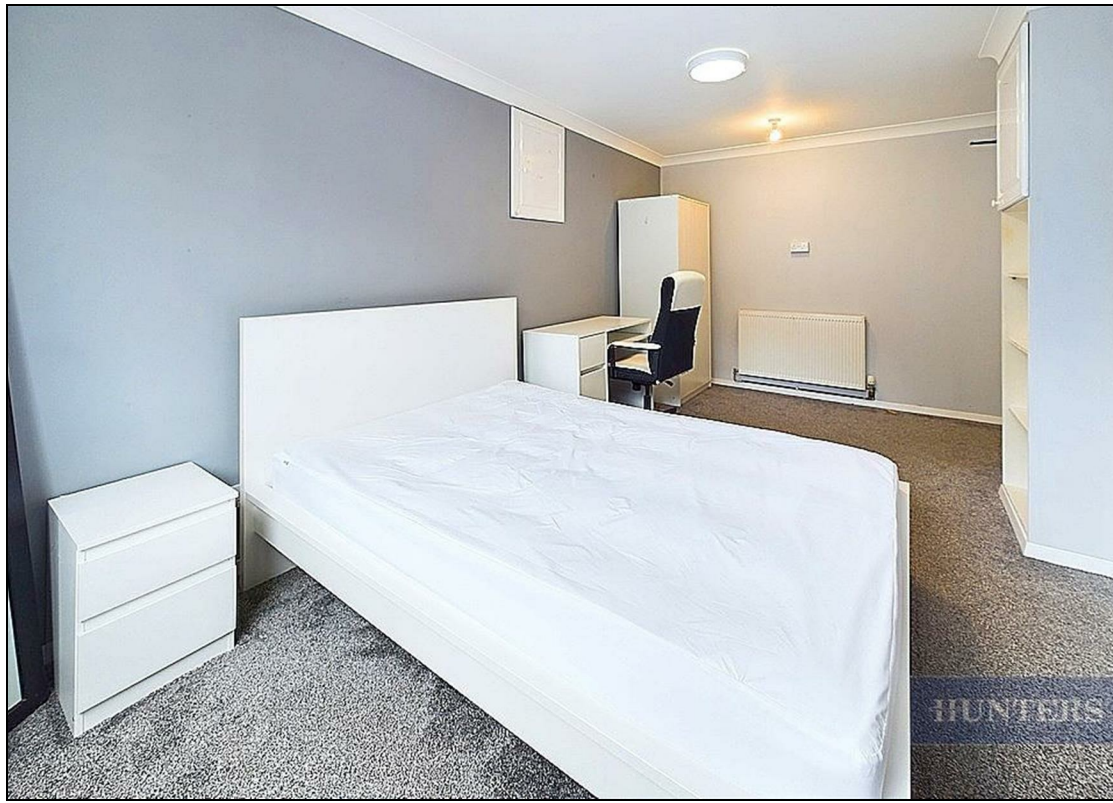
Photos: Require updating as now tenanted.

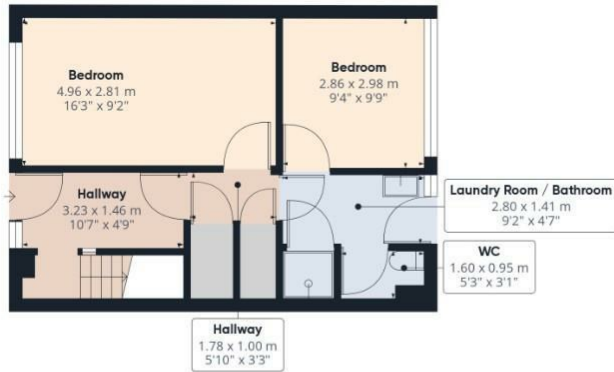
Tenure: Freehold

## KEY FEATURES

- Six bed student house
- Seperate shower room & bathroom
  - Off road parking
- Spacious lounge & separate kitchen
- Gas central heating & double glazing
- 0.2 mile walk to University of Winchester
- Bills package available as optional extra, paid separately to the rent
  - EPC: C (74)
- Council tax: Exempt for full time students







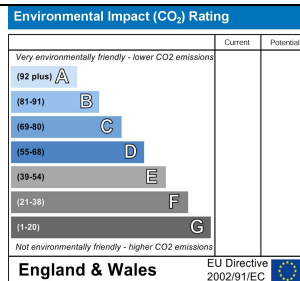
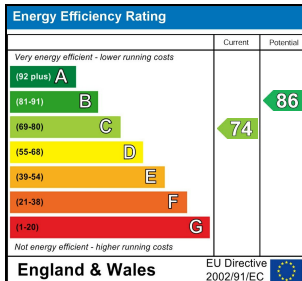
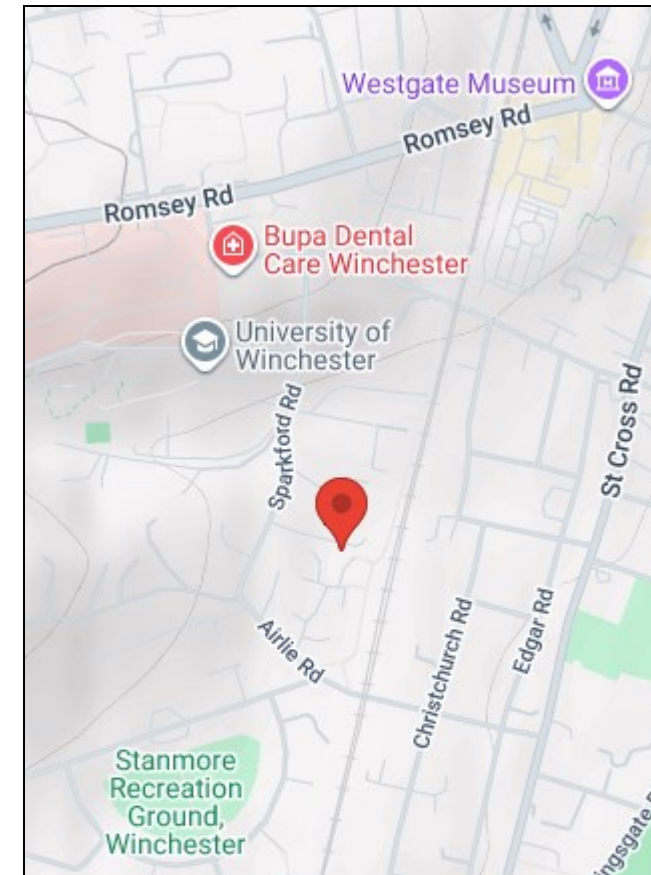
**HUNTERS**

Approximate total area<sup>(1)</sup>  
 123.64 m<sup>2</sup>  
 1330.85 ft<sup>2</sup>

(1) Excluding balconies and terraces

While every attempt has been made to ensure accuracy, all measurements are approximate, not to scale. This floor plan is for illustrative purposes only.

GIRAFFE 360



38 Bedford Place, Southampton, Hampshire, SO15 2DG | 02380 987 720  
[southampton@hunters.com](mailto:southampton@hunters.com) | [www.hunters.com](http://www.hunters.com)



This Hunters business is independently owned and operated by Clegg Properties Ltd | Registered Address 27 Westfield Road, Lymington, Hampshire, England, SO41 3PZ | Registered Number: 06421594 England and Wales | VAT No: 188 0548 76 with the written consent of Hunters Franchising Limited.