



Okeburn Road, SW17

£320,000

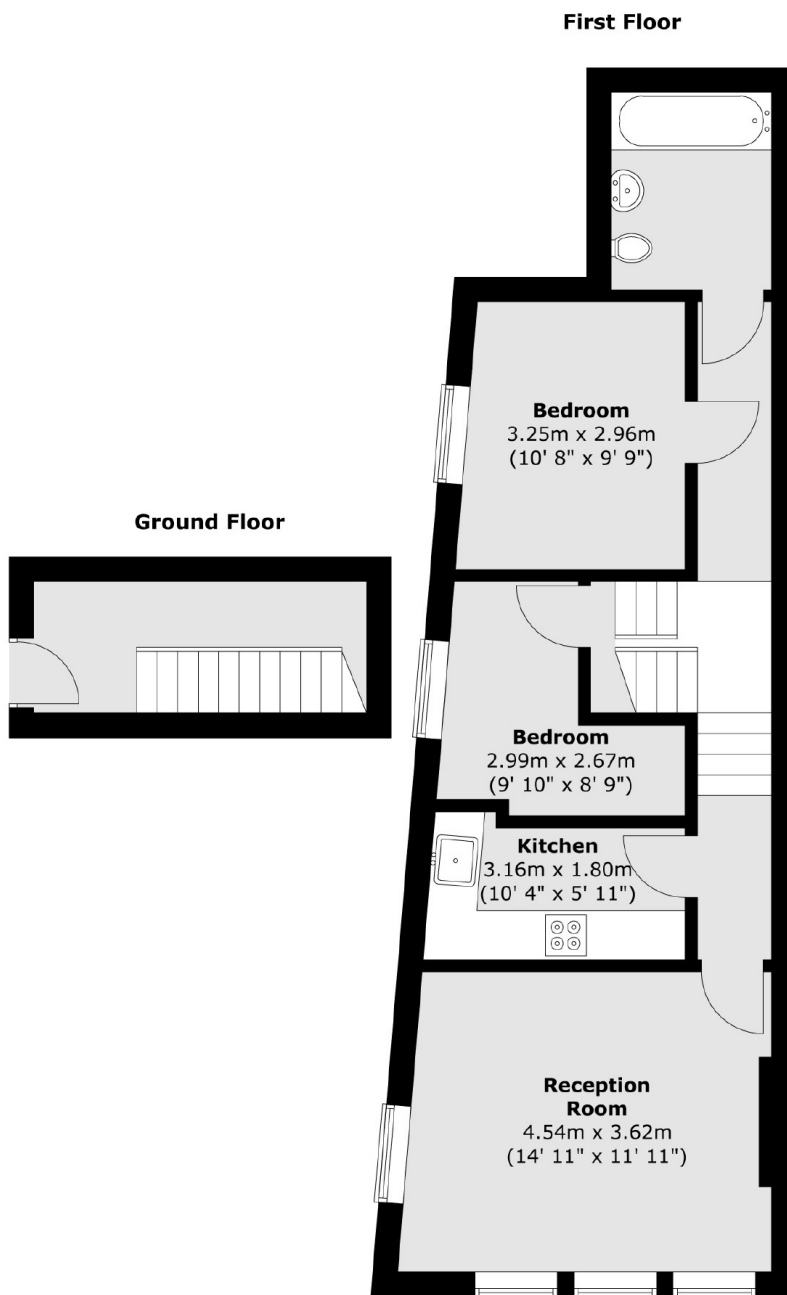
A rarely available upper maisonette set over the first floor of this handsome Victorian building with dual aspect accommodation. Comprising a large front reception room, separate kitchen, two bedrooms and a family bathroom, the property is sold chain free and retains a long lease.

Okeburn Street is a quiet tree lined residential street located moments away from the vast amenities of Tooting Broadway and wide green open spaces of Tooting Bec Common. The excellent transport links of Tooting Railway and Tooting Broadway Underground stations are also within walking distance.

Features

- Two Bedrooms
- Chain Free
- Long Lease
- Period Features
- Split Level
- Desirable Location

Okeburn Road, London, SW17



Total area (approx.) : 59.6 sq. m (641 sq. ft)