

SNELLERS

ESTATE AGENTS



Westbury Road, KT3

£399,950

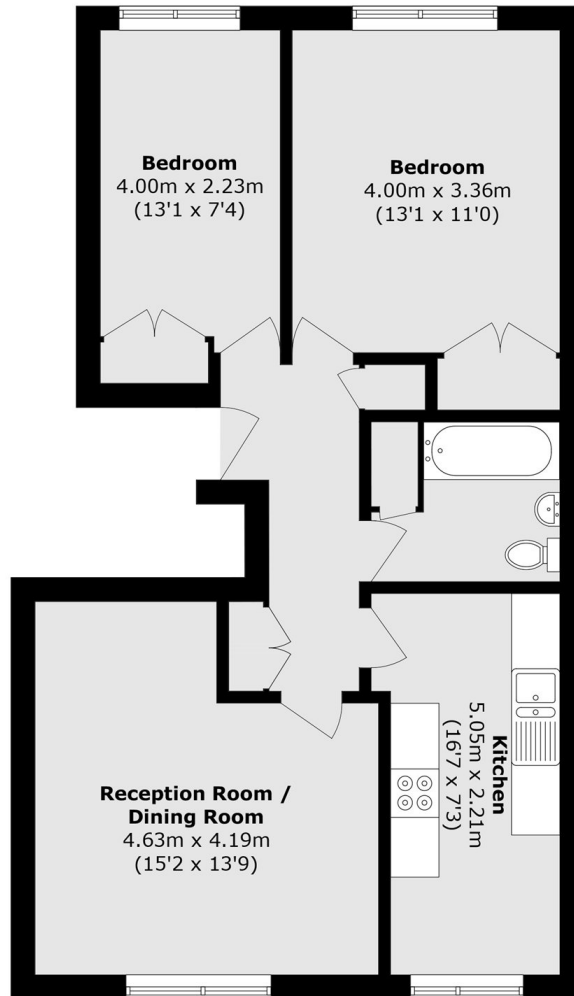
Offered with no onward chain, this well-proportioned two-bedroom ground floor apartment offers bright and spacious accommodation throughout, including a generous reception room, separate kitchen and a family bathroom. Benefiting from a long lease and access to attractive communal gardens, the apartment presents an excellent opportunity for first-time buyers or investors.

Sable Court is within easy reach of New Malden High Street, with its excellent selection of shops, cafés and restaurants, while New Malden Station provides direct services to London Waterloo.

- Two Bedrooms • Ground Floor • No Onward Chain •
- Long Lease • Communal Gardens • Great Location •

SNELLERS

ESTATE AGENTS



Total area (approx.): 65.6 sq. m (706.1 sq. ft)

Snellers Teddington Sales
74 Broad Street
Teddington
TW11 8QX
020 8408 8040
teddingtonsales@snellers.co.uk

Energy Rating: D We aim to make our particulars both accurate and reliable. However they are not guaranteed; nor do they form part of an offer or contract. If you require clarification on any points then please contact us, especially if you're traveling some distance to view. Please note that appliances and heating systems have not been tested and therefore no warranties can be given as to their good working order