



Sir Francis Drake Court, 43-45 Banning Street, Greenwich SE10 0FF



# Sir Francis Drake Court, Greenwich SE10

Leasehold (110 years remaining)

A bright and spacious apartment in Greenwich, offering well-proportioned living space with a fully fitted kitchen. Ideally positioned for excellent transport links and the rich cultural heritage of this historic riverside neighbourhood

## Key Features

- 1 Bedroom, 1 Bathroom
- Chain Free
- Light and spacious
- Council Tax: **B**
- Service Charge: **£3,024 P/A**
- No ground rent
- Excellent transport links
- EPC: **B**

Situated in the heart of Greenwich, this light-filled one-bedroom apartment at Sir Francis Drake Court offers a welcoming home in one of London's most characterful riverside neighbourhoods. The property provides well-proportioned accommodation that maximises its 508 square feet, creating a sense of space and comfort throughout.

The apartment features a bright reception room that benefits from generous natural light, complemented by a fully fitted kitchen complete with built-in oven and hob, providing modern convenience for everyday living. The good-sized bedroom offers a peaceful retreat, while the bathroom completes the accommodation with contemporary fixtures.

Transport connections are exceptional, with North Greenwich station on the Jubilee line providing swift access to Canary Wharf and the West End, while Maze Hill and Greenwich stations offer Southeastern services into central London. The DLR at Cutty Sark further enhances connectivity across east London, making commuting effortless from this historic location.









# Sir Francis Drake Court

Approximate Gross Internal Area = 47.2 sq m / 508.0 sq ft

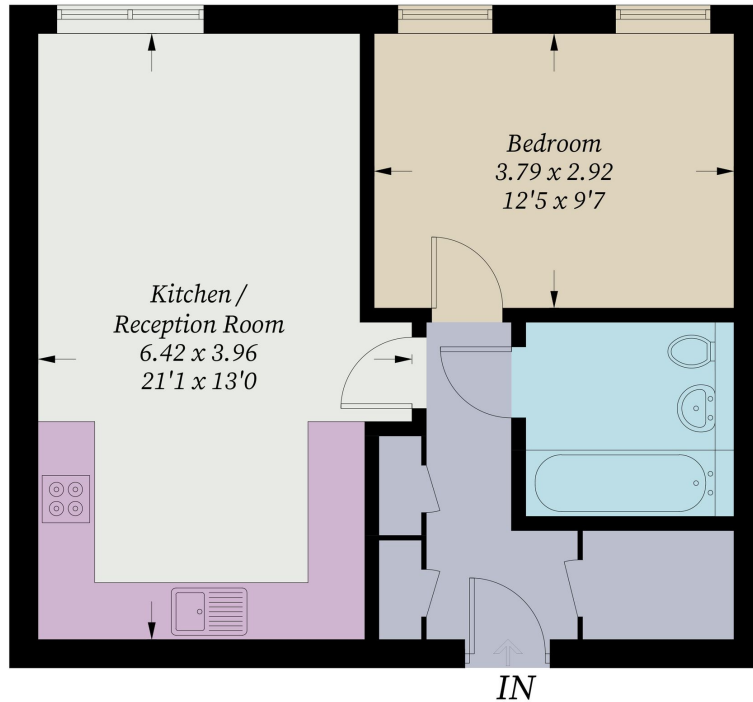


Illustration for identification purposes only, measurements are approximate,  
not to scale. Fourlabs.co © (ID1298389)