



Guide Price
£425,000

Freehold

3x  1x  2x 

**Godden Road,
Snodland, Kent, ME6**

OVER 60?

Secure this property
for up to **59% less!**

Wards
Helping you move forwards



Main features

- Immaculately presented home ready to move straight into
- Handy garage, driveway and carport offering ample parking
- Family bathroom plus convenient downstairs cloakroom
- Great entertaining space in the stunning kitchen and dining area
- Desirable location with pretty views

Accommodation

GROUND FLOOR

Porch: 7'0 x 5'0 (2.14m x 1.53m)
 Entrance Hall
 Cloakroom
 Kitchen Area: 18'0 x 9'0 (5.49m x 2.75m)
 Dining Area: 9'0 x 9'0 (2.75m x 2.75m)
 Lounge: 21'0 x 11'0 (6.41m x 3.36m)

FIRST FLOOR

Landing
 Bedroom 1: 11'0 x 10'0 (3.36m x 3.05m)
 Bedroom 2: 9'1 x 9'0 (2.77m x 2.75m)
 Bedroom 3: 8'1 x 8'0 (2.47m x 2.44m)
 Bathroom

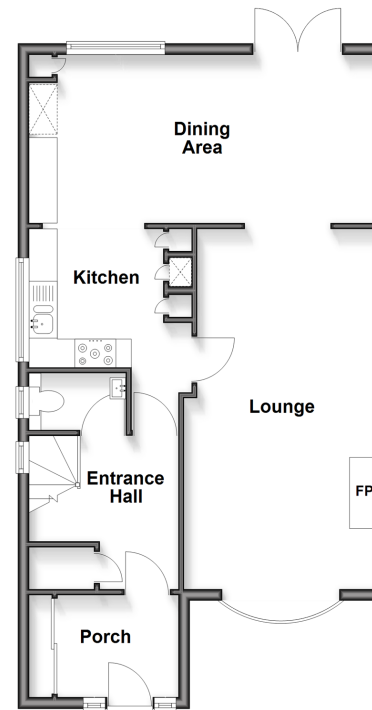
OUTBUILDING

Garage: 28'1 x 9'4 (8.57m x 2.85m)

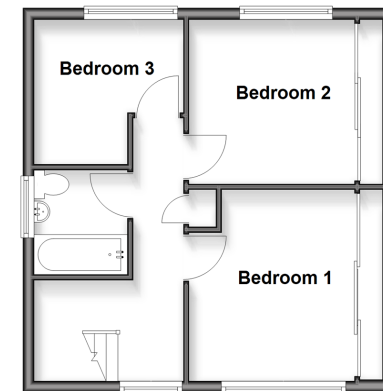
OUTSIDE

Driveway and Carport
 Front & Rear Gardens

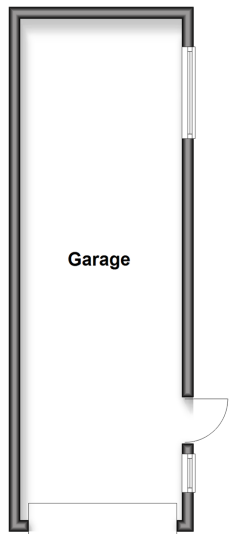
Ground Floor
 Approx. 63.5 sq. metres (683.3 sq. feet)



First Floor
 Approx. 39.3 sq. metres (423.0 sq. feet)



Outbuilding
 Approx. 25.3 sq. metres (272.5 sq. feet)



Call Snodland - 01634 245055 ■ wardsofKent.co.uk

■ Legal advice should be taken to verify fixtures/fittings, planning, alterations and/or lease details
 ■ Through a Homewise Home For Life Plan people aged 60+ can secure this property for up to 50% less, by purchasing a Lifetime Lease.

■ Appliances & services are untested, dimensions are approximate and floor plans are not to scale



13821865/20251022/MM/LK