

linkagency

ST CUTHBERT'S
APARTMENTS

**A NEW DEVELOPMENT OF
19 LUXURY APARTMENTS**

1 & 2 BEDROOMS
AVAILABLE
LATE SUMMER 2026

SE

Unparalleled renting in S5

Welcome to St Cuthbert's Apartments, a brand new residential development coming to the rental market in late summer 2026. The development takes its name from the neighbouring church, which dates back to the early 1900s.

Set over four storeys, the development will feature 19 contemporary apartments, offering a selection of one and two bedroom homes.



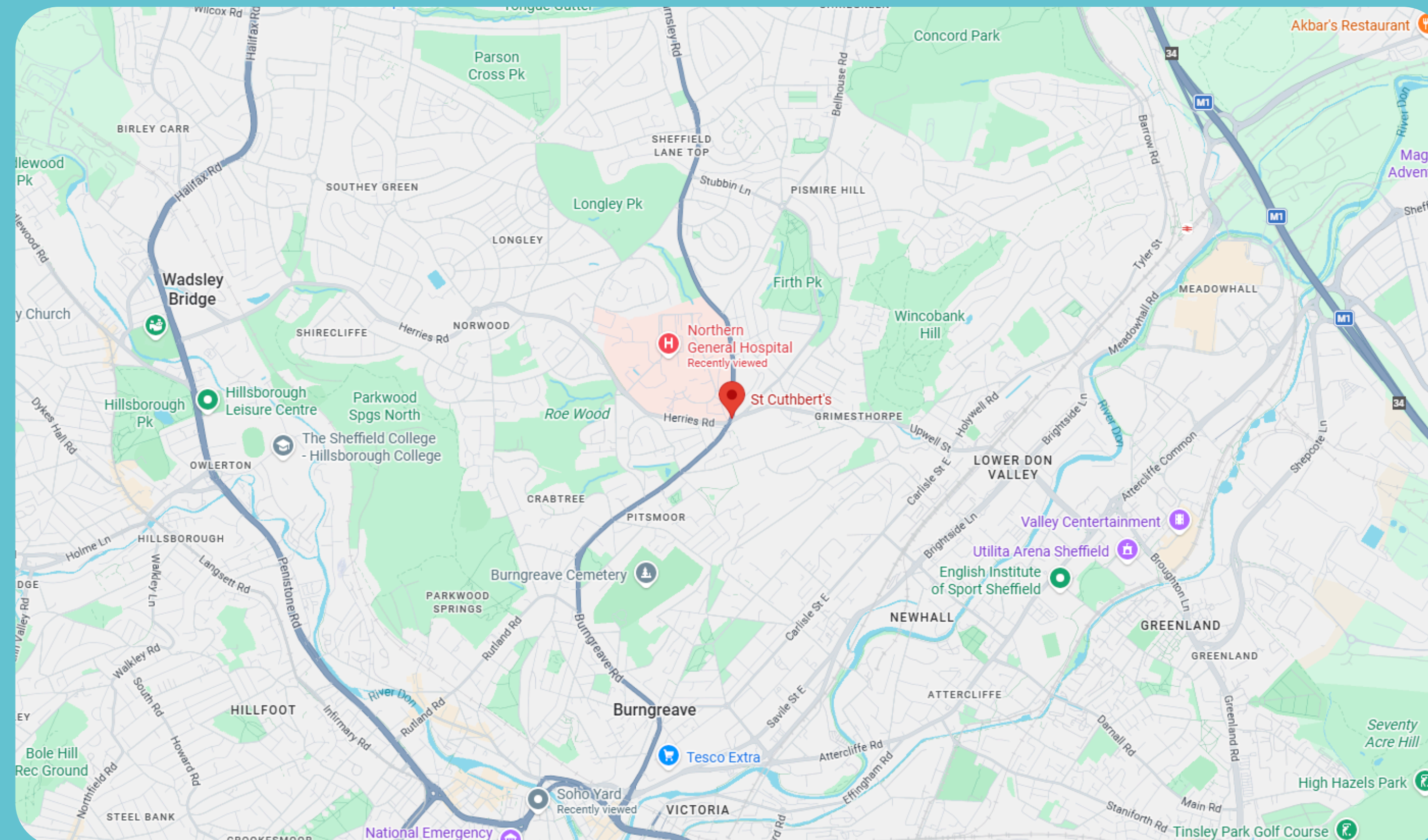
The Area

The newest addition to S5. St Cuthbert's is perfectly positioned to enjoy the best of everything Sheffield has to offer.

Situated directly opposite Northern General Hospital, the development offers an ideal location for healthcare professionals.

Tenants can access the city centre within 20 minutes, taking one of the frequent public buses which stops a few seconds walk from the building.

Those looking to travel further afield are a short drive from the M1, which is just 2.5 miles away.



Meadowhall	13 minutes	14 minutes
Kelham Island	16 minutes	12 minutes
Sheffield Train Station	19 minutes	13 minutes
Peak District National Park	49 minutes	29 minutes



One-bedroom

linkagency **Approximate Gross Internal Floor Area = 37.0 sq m / 398 sq ft**

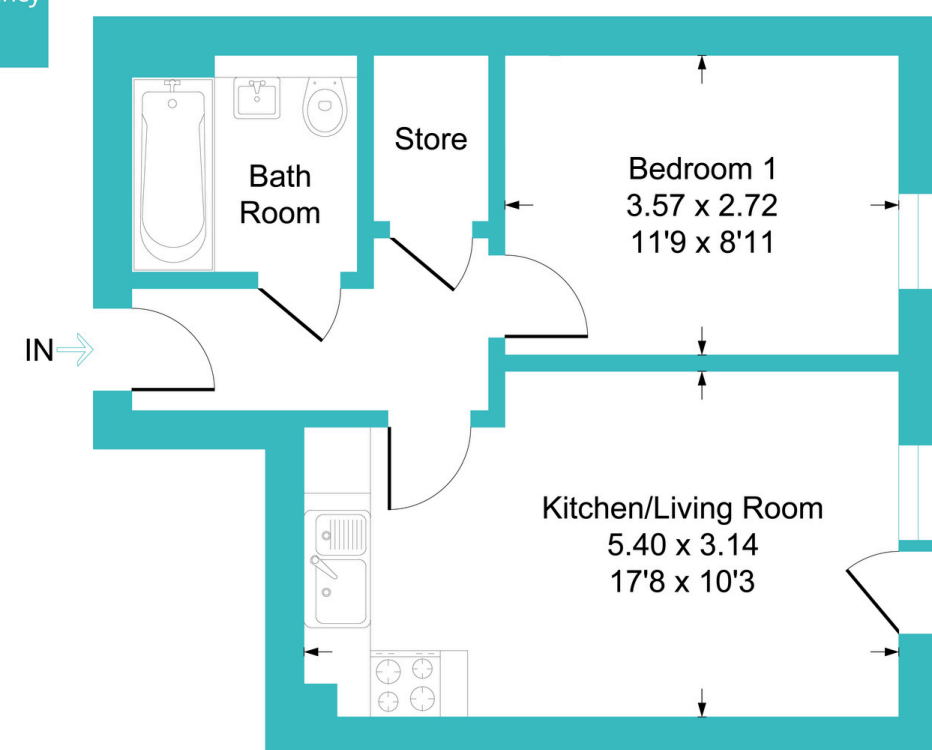


Illustration for identification purposes only, measurements are approximate, not to scale.

linkagency **Approximate Gross Internal Floor Area = 49.0 sq m / 527 sq ft**

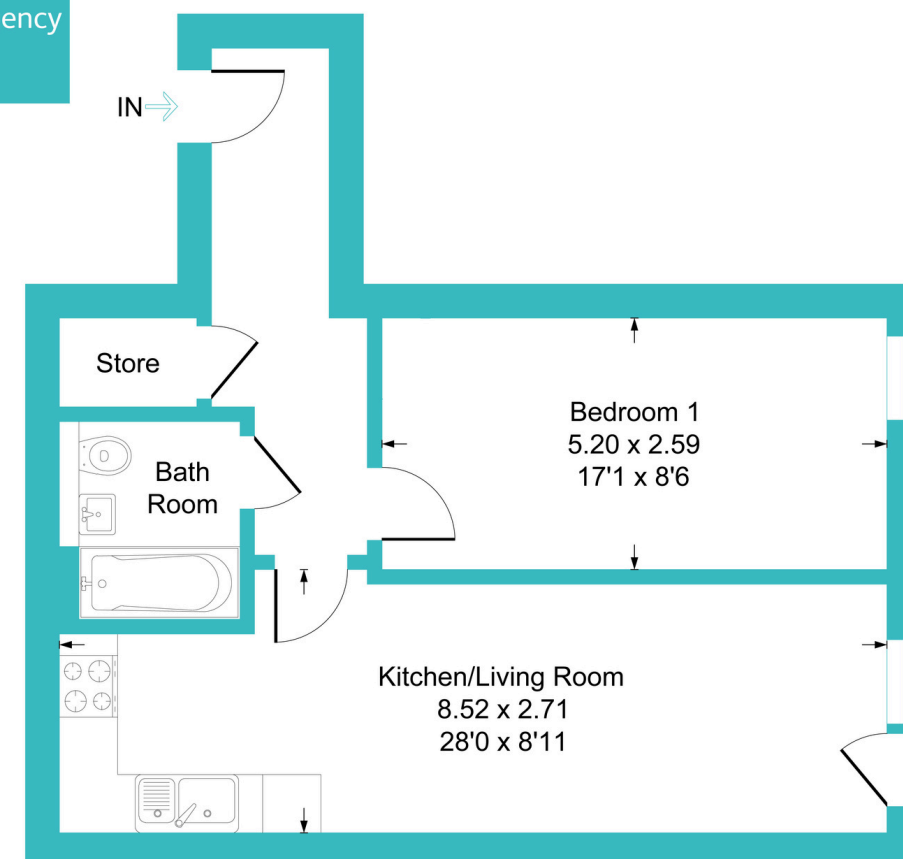


Illustration for identification purposes only, measurements are approximate, not to scale.

linkagency **Approximate Gross Internal Floor Area = 39.0 sq m / 420 sq ft**

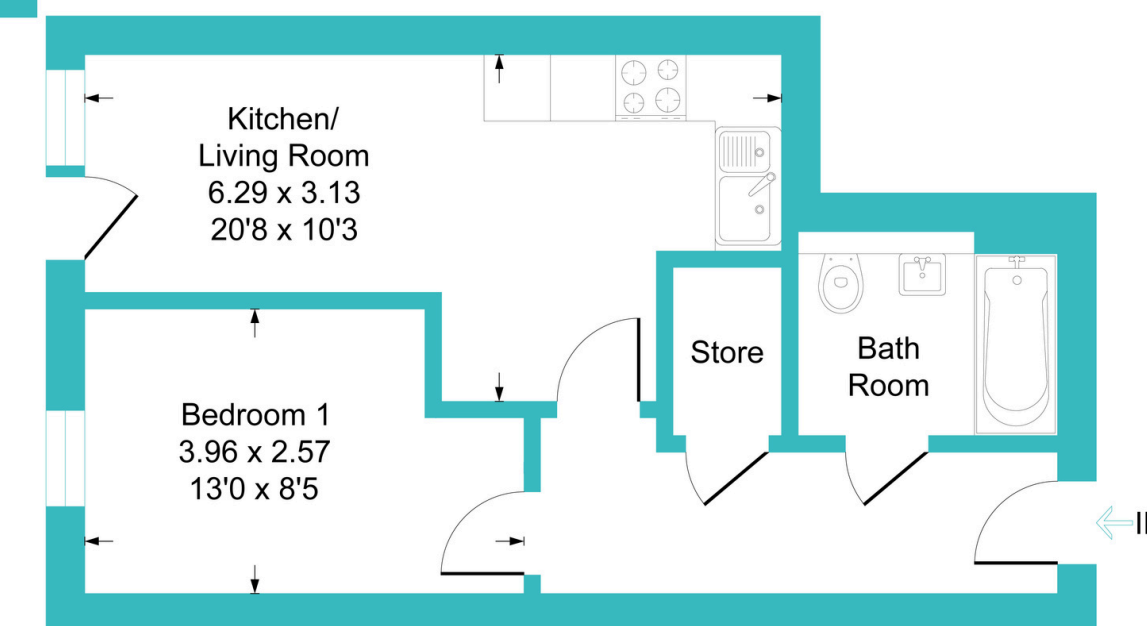


Illustration for identification purposes only, measurements are approximate, not to scale.

linkagency **Approximate Gross Internal Floor Area = 42.0 sq m / 452 sq ft**

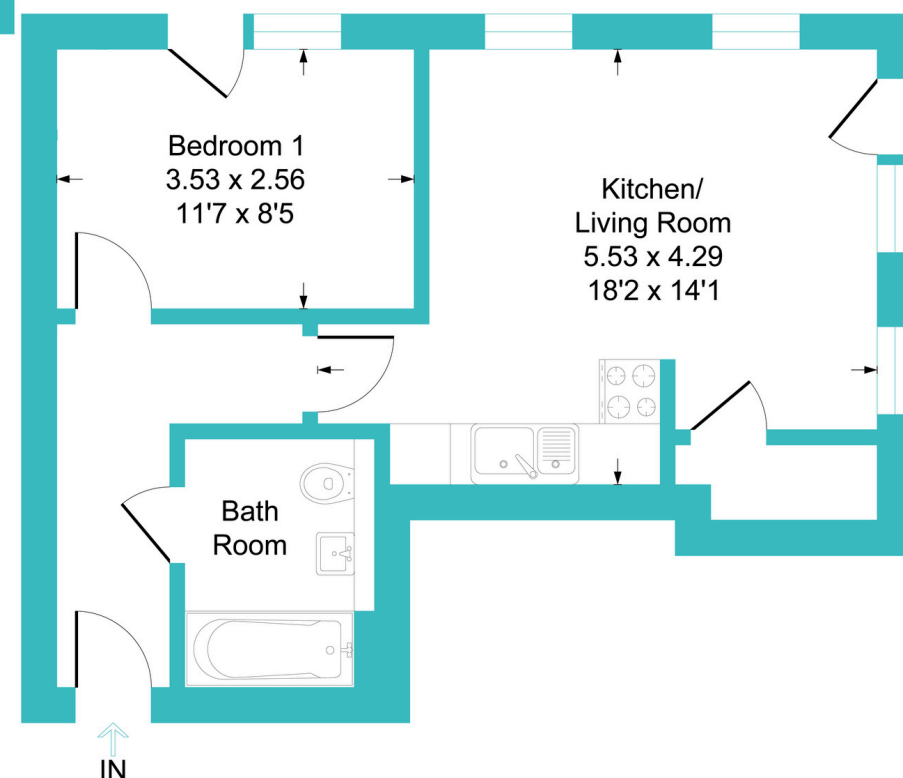


Illustration for identification purposes only, measurements are approximate, not to scale.

linkagency **Approximate Gross Internal Floor Area = 46.0 sq m / 495 sq ft**

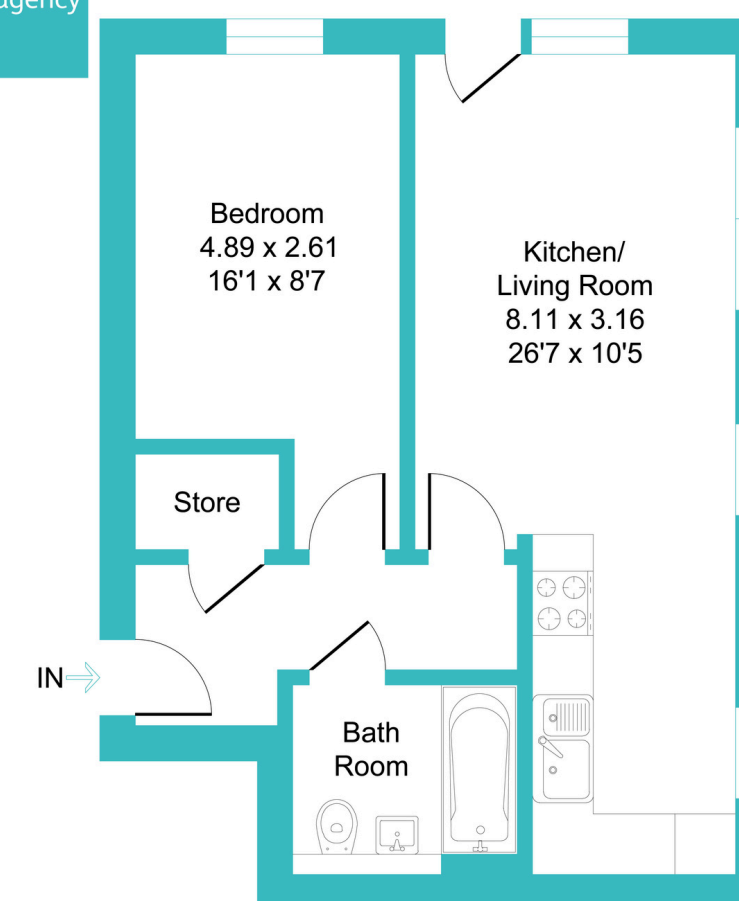


Illustration for identification purposes only, measurements are approximate, not to scale.

Two-bedroom

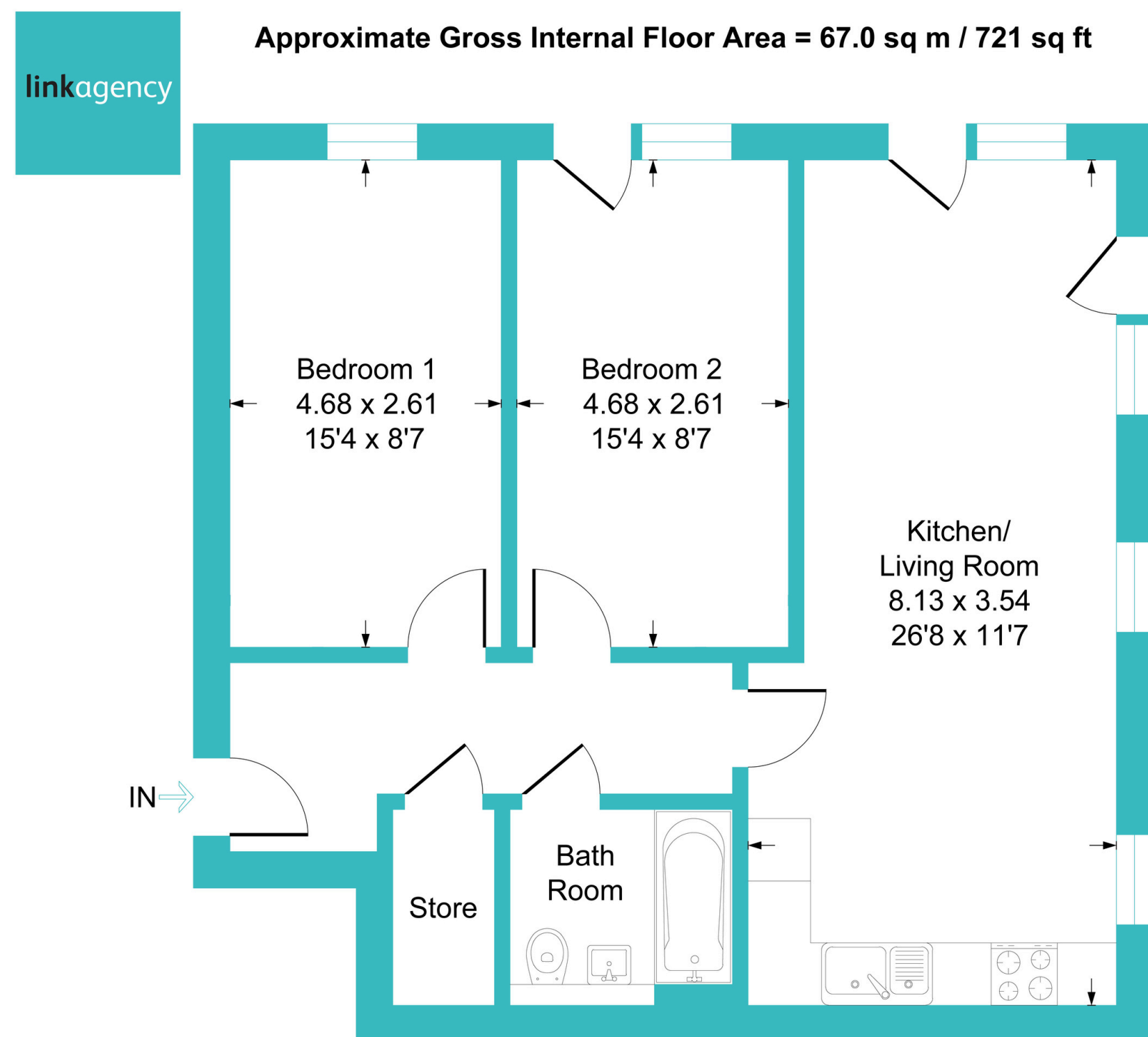


Illustration for identification purposes only, measurements are approximate, not to scale.

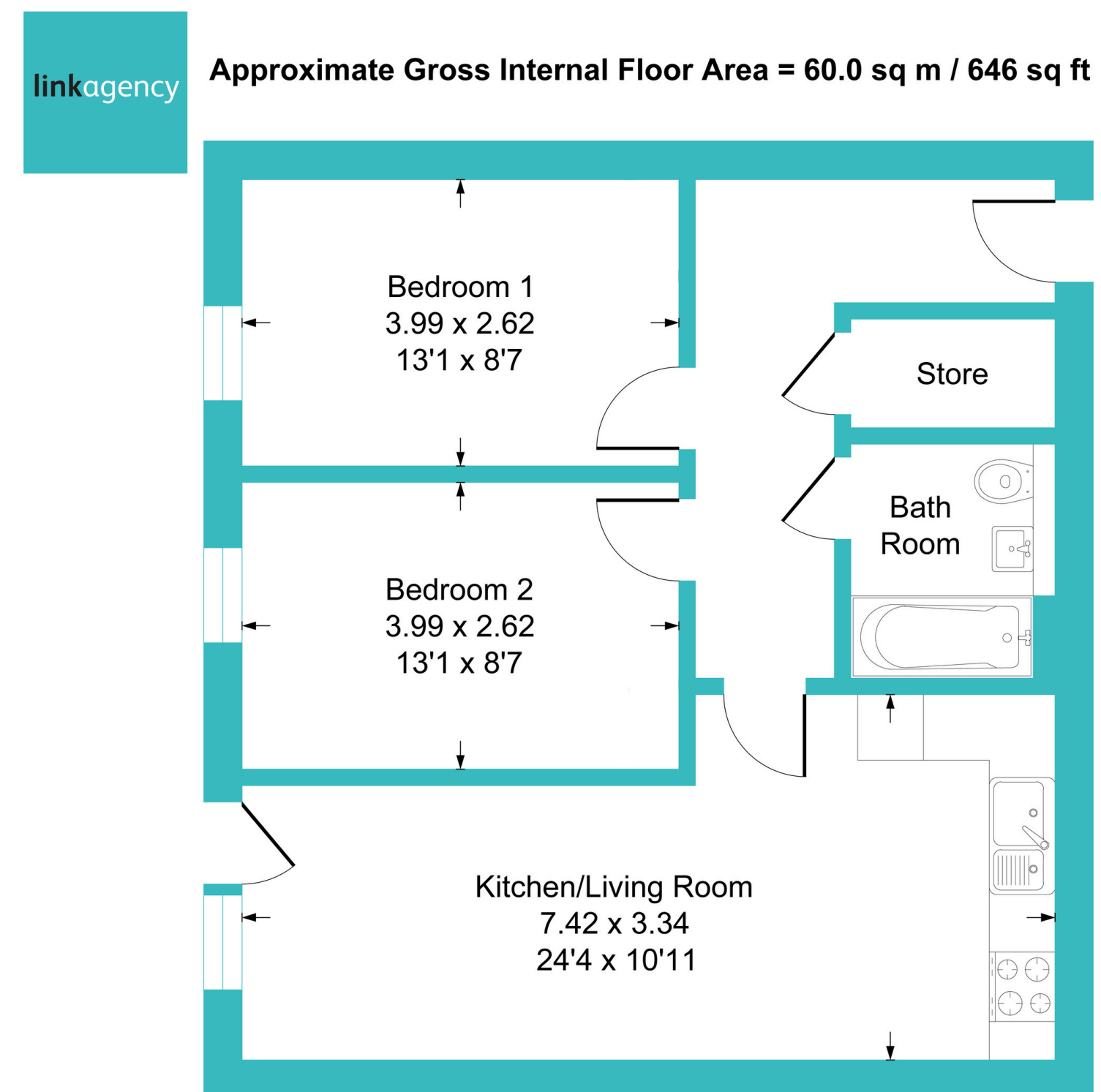


Illustration for identification purposes only, measurements are approximate, not to scale.

Features



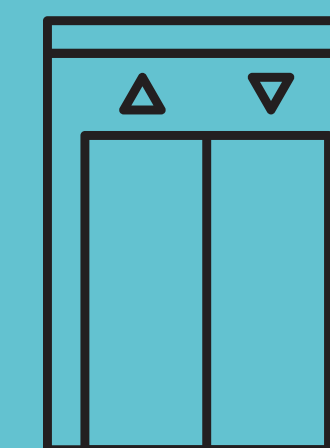
Residents parking



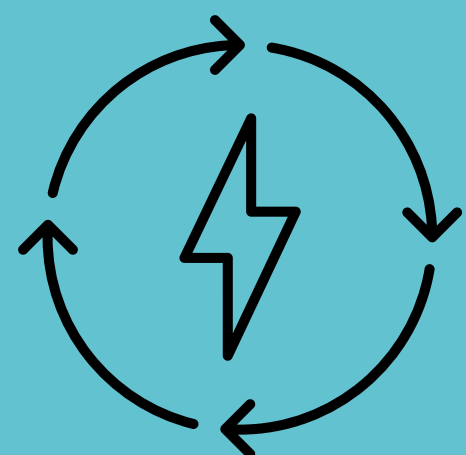
Secure cycle storage



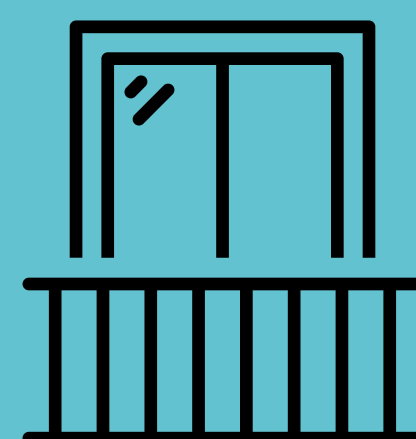
Excellent transport links



Lift access



High EPC ratings



Juliette balconies



Opposite Northern
General Hospital



CCTV

Don't miss out,
register your
interest early.

linkagency

Tel: 01405 768401
jake@linkagency.co.uk

www.linkagency.co.uk

ST CUTHBERT'S
APARTMENTS