



Westlands Road
Hull

Guide Price £110,000 – £120,000

WIGWAM

- 2 bedroom mid-terrace house
- Garden to the front and rear
- Ideal for first time buyers or investment
- Close to amenities and transport links

This beautifully presented two-bedroom mid-terrace house offers an exceptional opportunity for first-time buyers or investors seeking a well-located and inviting home.

The property boasts a spacious and bright living area, complemented by a modern kitchen that is both modern and well-equipped for daily life.

Two generously sized bedrooms provide comfortable accommodation, while the family bathroom is finished to a high standard.

The home is ideally situated close to local amenities and excellent transport links, making every-day living convenient and stress-free. Ready to move into and enjoy, this property combines practical features with a warm and homely atmosphere.



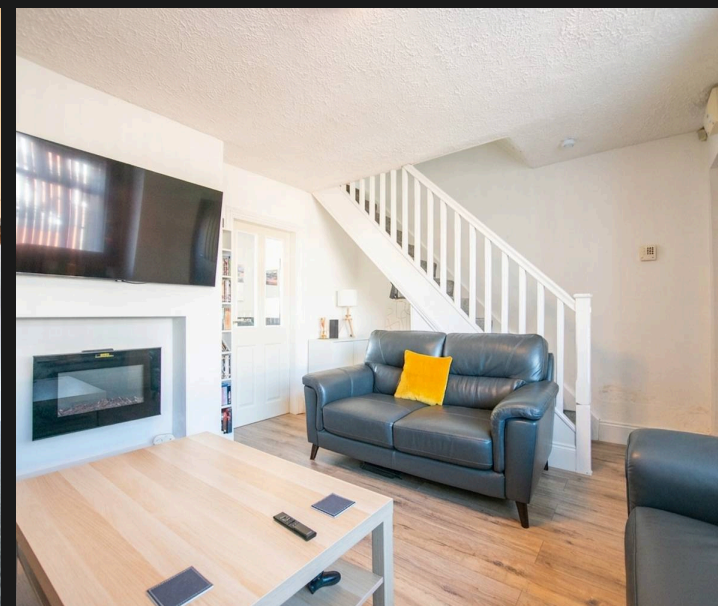
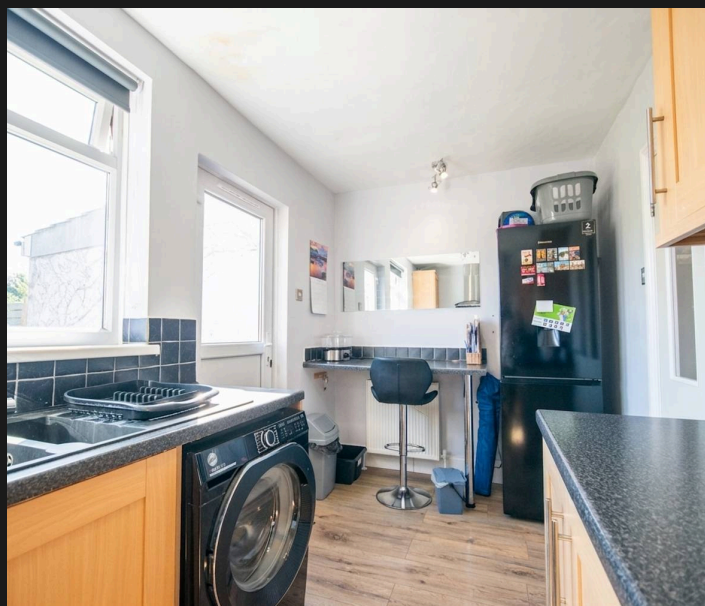
Outside, the property benefits from attractive gardens to both the front and rear, offering peace and privacy as well as the perfect setting for relaxing or entertaining guests. The rear garden is an ideal space for summer barbeques or enjoying a morning coffee, while the front garden enhances the home's kerb appeal and provides a welcoming entrance.

With its combination of comfortable indoor living and delightful outdoor spaces, this property is sure to appeal to a wide range of buyers.

Tenure: Freehold

EPC Energy Efficiency Rating: D

EPC Environmental Impact Rating: D





Lounge

With laminate flooring, electric fireplace and large window.

Kitchen

With laminate flooring, shaker-style kitchen units with integrated gas hob and oven with overhead extractor fan, laminate worktops, sink and tap, breakfast bar and large window.

Bedroom 1

With carpet, radiator and window.

Bathroom

With tiled walls, bath, wash basin with under-sink cabinets, toilet, towel radiator and window.

Bedroom 2

With carpet and large window.

Off street

1 Parking Space

Off-street parking via 10-foot.









Wigwam

Block A, Unit 7B, Flemingate, Beverley - HU17 0NQ

01482505152 • hello@wigwamhomes.co.uk • www.wigwamhomes.co.uk