



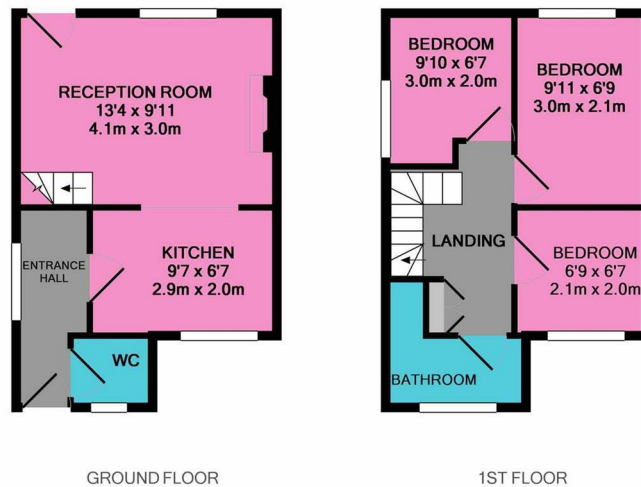
TO LET

West Cottage, Yedmandale Road, West Ayton, Scarborough, YO13 9JP
£800 PCM



SW
RESIDENTIAL

- Available Now
- Large Garden
- 3 Bedrooms
- Open Plan Living Space
- Village Location
- Off Road Parking
- Gas Central Heating
- Council Tax Band B



Whilst every attempt has been made to ensure the accuracy of the floor plan contained here, measurements of doors, windows, rooms and any other items are approximate and no responsibility is taken for any error, omission, or mis-statement. This plan is for illustrative purposes only and should be used as such by any prospective purchaser. The services, systems and appliances shown have not been tested and no guarantee as to their operability or efficiency can be given.
Made with Metropix ©2019

Directions

THE PROPERTY

Nestled in the charming village of West Ayton, this delightful semi-detached cottage on Yedmandale Road is now available for immediate let on an unfurnished basis. This property boasts three bedrooms, making it an ideal home for families or professionals seeking a peaceful retreat.

As you enter, you will be greeted by a contemporary open-plan kitchen and living area, perfect for both entertaining guests and enjoying quiet evenings at home. The modern bathroom features a luxurious freestanding shower and bath, providing a serene space to unwind after a long day.

The cottage is equipped with gas central heating, ensuring warmth and comfort throughout the colder months. Additionally, the property offers convenient parking, a valuable asset in this picturesque village.

One of the standout features of this home is the stunning views of the surrounding countryside, which can be enjoyed from various vantage points within the property. This tranquil setting allows for a perfect blend of rural charm and modern living, making it a truly desirable place to call home.

If you are looking for a semi-detached cottage that combines contemporary style with the beauty of nature, this property in West Ayton is not to be missed.

SITUATION

<http://www.https://find-energy-certificate.digital.communities.gov.uk/energy-certificate/2958-5933-6229-7249-9920>