



Guide Price
£315,000

Freehold

3x  1x  2x 

**Kenyon Road,
Portsmouth, Hampshire,
PO2**

OVER 60?

Secure this property
for up to **59% less!**

cubitt & west
Helping you move forwards



Main features

- Situated in a sought after location a short walk to Collage Park
- Garage to the rear with access
- Great school catchment area
- Open plan on the ground floor with a separate lounge and utility room
- Modern decor throughout, ready to move straight into

Accommodation

GROUND FLOOR

Entrance Hallway

Lounge: 15'2 x 11'9 (4.63m x 3.58m)

Kitchen: 12'3 x 11'4 (3.74m x 3.46m)

Utility/Toilet: 9'4 x 6'7 (2.85m x 2.01m)

Dining Area: 15'5 x 8'4 (4.70m x 2.54m)

FIRST FLOOR

Landing

Bedroom 1: 15'2 x 10'4 (4.63m x 3.15m)

Bedroom 2: 12'5 x 12'1 (3.79m x 3.69m)

Bedroom 3: 8'2 x 7'3 (2.49m x 2.21m)

Bathroom: 6'2 x 5'8 (1.88m x 1.73m)

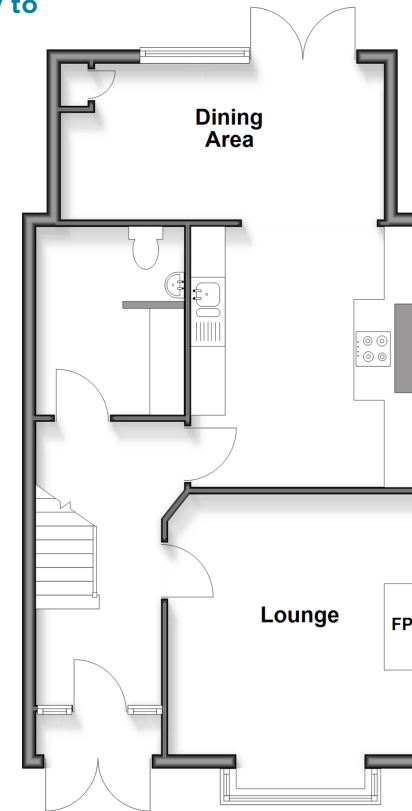
OUTSIDE

Rear Garden

Garage

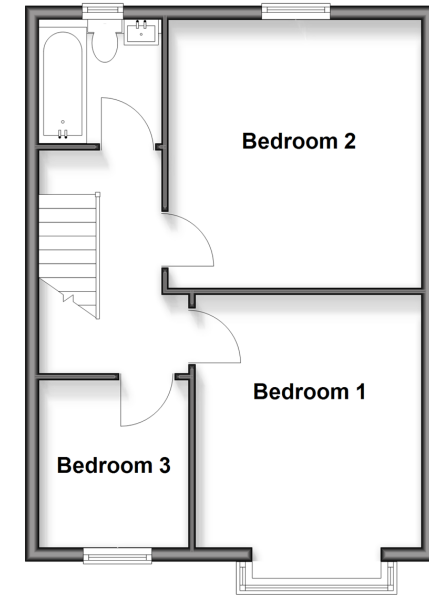
Ground Floor

Approx. 54.3 sq. metres (584.9 sq. feet)



First Floor

Approx. 43.1 sq. metres (464.3 sq. feet)



Call Portsmouth - 023 9266 1213 ■ cubittandwest.co.uk

- If buying to rent, please check if Local Authority licensing schemes apply before proceeding
- Through a Homewise Home For Life Plan people aged 60+ can secure this property for up to 59% less, by purchasing a Lifetime Lease



41635017/20260618/MO1/JG