



GREENWICH CHURCH STREET,

£2,350 per month

Split level conversion
Spacious living room
Two bedrooms
Modern bathroom
Heart of Greenwich town centre
Energy rating: d

@marshandparsons
marshandparsons.co.uk

MARSH &
PARSONS



ABOUT THE PROPERTY

Split level conversion apartment, situated in the heart of Greenwich town centre featuring its own private entrance. Inside you will find a good size entrance, kitchen/diner and a very spacious living room with a view of the River Thames. On the top level, you will find a large bedroom, offering views of the river and Canary Wharf, a single bedroom/study and modern bathroom. The property is offered unfurnished and features sash windows, gas central heating, fitted carpets and an entry phone system.

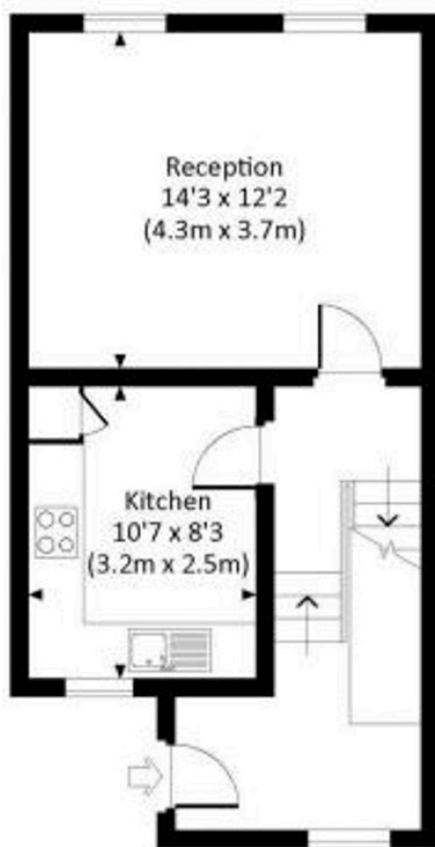
Cutty Sark DLR station is just moments away on foot, as are most useful shops and Greenwich market. Greenwich mainline station is approximately a five minute walk away.



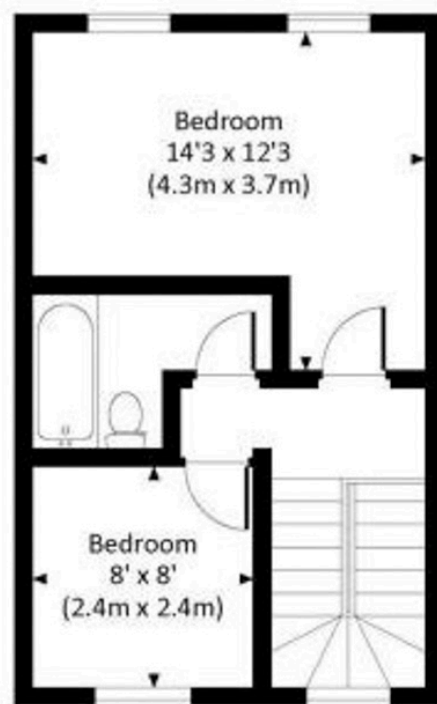
STEP INSIDE GREENWICH CHURCH STREET

GREENWICH CHURCH STREET, SE10

Approx. gross internal area
721 Sq Ft. / 67.0 Sq M.



GROUND FLOOR



FIRST FLOOR



All measurements have been made in accordance with RICS Code of Measuring Practice which are approximate only and only for illustrative purposes. For the avoidance of doubt, Drawing Zone4 Design shall not be liable for any reliance on these measurements. © 2016 newbuildings.com 020 3320 9922

Greenwich
020 8815 2230

Energy Rating: D We aim to make our particulars both accurate and reliable. However, they are not guaranteed; nor do they form part of an offer or contract. If you require clarification on any points then please contact us, especially if you're traveling some distance to view. Please note that appliances and heating systems have not been tested and therefore no warranties can be given as to their good working order

MARSH &
PARSONS