

8 CASSON SQUARE, SE1

£5,000 pcm

This luxurious 2-bedroom apartment based on the 11th floor of the infamous 8 Casson Square development, boasts a stylish interior, spacious layout, and bright living spaces. Conveniently located with 5* resident only facilities and a 24-hour concierge, the property is ideal for professionals, students or a small family seeking a sophisticated and well-maintained home.

- Available Now
- Fully Furnished
- 11th Floor with Lift Access
- 24-Hour Concierge
- 5* Pool, Spa & Gym Facilities
- 0.1 miles to Waterloo Station

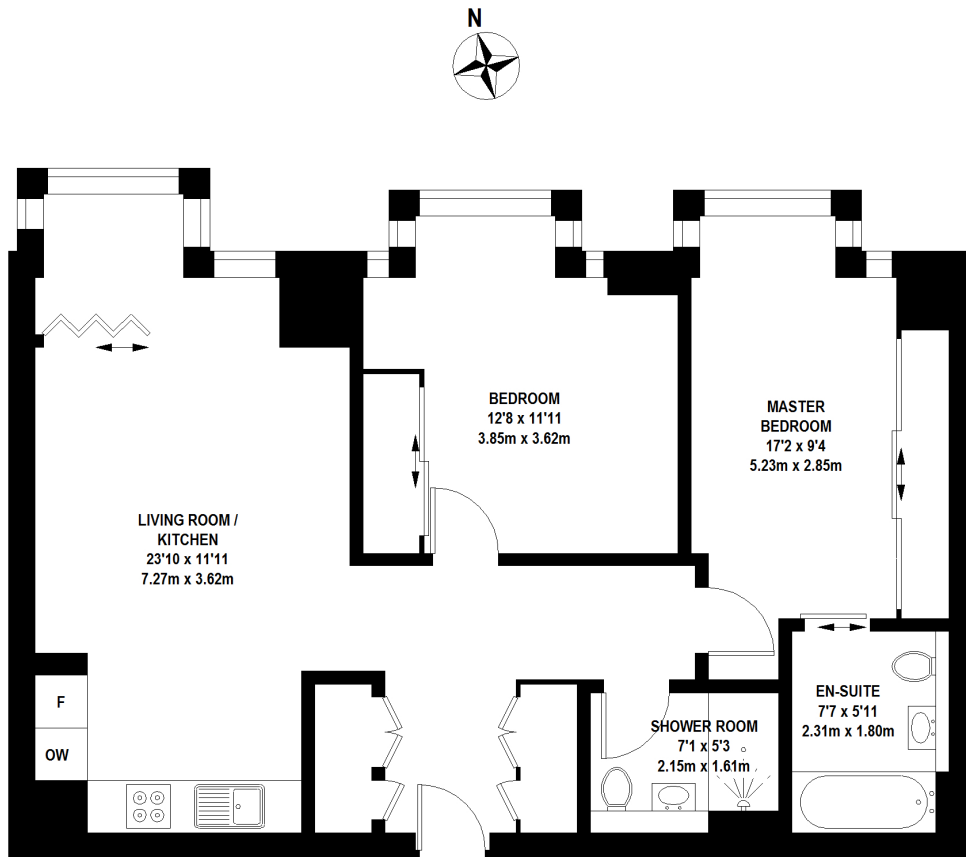


ABOUT THE HOME

Discover refined urban living at 8 Casson Square, Southbank Place. This elegant two-bedroom apartment on the 11th floor offers generous natural light throughout, with an open-plan reception room designed for modern life. The sleek, fully-fitted kitchen is equipped with premium Miele appliances including a combination microwave oven, induction hob, integrated dishwasher, wine cooler, and fridge-freezer. Both bedrooms are spacious doubles, each enjoying the same bright, airy feel that defines the apartment. Thoughtful finishes include solid wood flooring throughout, triple-glazed windows, integrated heating and cooling, and an in-unit washer-dryer. Casson Square takes security seriously, with 24-hour concierge service, apartment video entry, site-wide CCTV, and a dedicated security team operating around the clock from a centralised control office. Residents also enjoy exclusive access to a state-of-the-art gym, swimming pool, and leisure facilities. Waterloo station puts you on the Jubilee, Northern, Bakerloo & Waterloo & City lines. The London Eye, SEA LIFE Aquarium and Leake Street Graffiti Tunnel are all a short walk with Borough Market and Tate Modern only 20 minutes away on foot, along the river.







TOTAL APPROX. FLOOR AREA 756 SQ.FT. (70.25 SQ.M)

Whilst every attempt has been made to ensure the accuracy of the floor plan contained here, measurements of door, windows, rooms and any other items are approximate and no responsibility is taken for any error, omission, or mis-statement. This plan is for illustrative purposes only and should be used as such by any prospective purchaser. The services, systems and appliances shown have not been tested and no guarantee as to their operability or efficiency can be given © 2021 (ID767857)

LiFE RESIDENTIAL

252 Westminster Bridge
Road, London, SE1 7PD
Sales: 020 7476 0125
Lettings: 020 7620 1600

Energy Rating: B. We aim to make our particulars both accurate and reliable. However they are not guaranteed; nor do they form part of an offer or contract. If you require clarification on any points then please contact us, especially if you're traveling some distance to view. Please note that appliances and heating systems have not been tested and therefore no warranties can be given as to their good working order.