

est 1979

Jeremy  
Leaf & Co.



Grove Avenue, London

£625,000

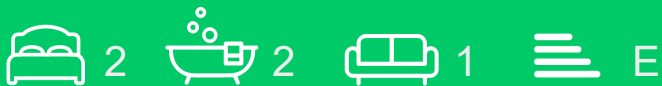
- 0.3 miles to Finchley Central Underground Station
- Two bedrooms
- Share of Freehold
- Two bathrooms (one en-suite)
- 0.1 miles to local shops and amenities
- Ground floor
- Private garden
- Modern Bathroom
- Council Tax Band D

863 High Road, London, N12 8PT  
020 8446 4295

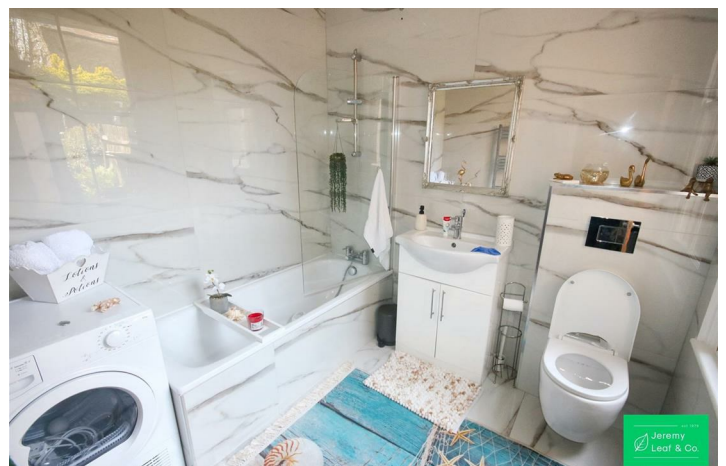
property@jeremyleaf.co.uk  
<https://www.jeremyleaf.co.uk/>

# Grove Avenue, London, N3 1QP

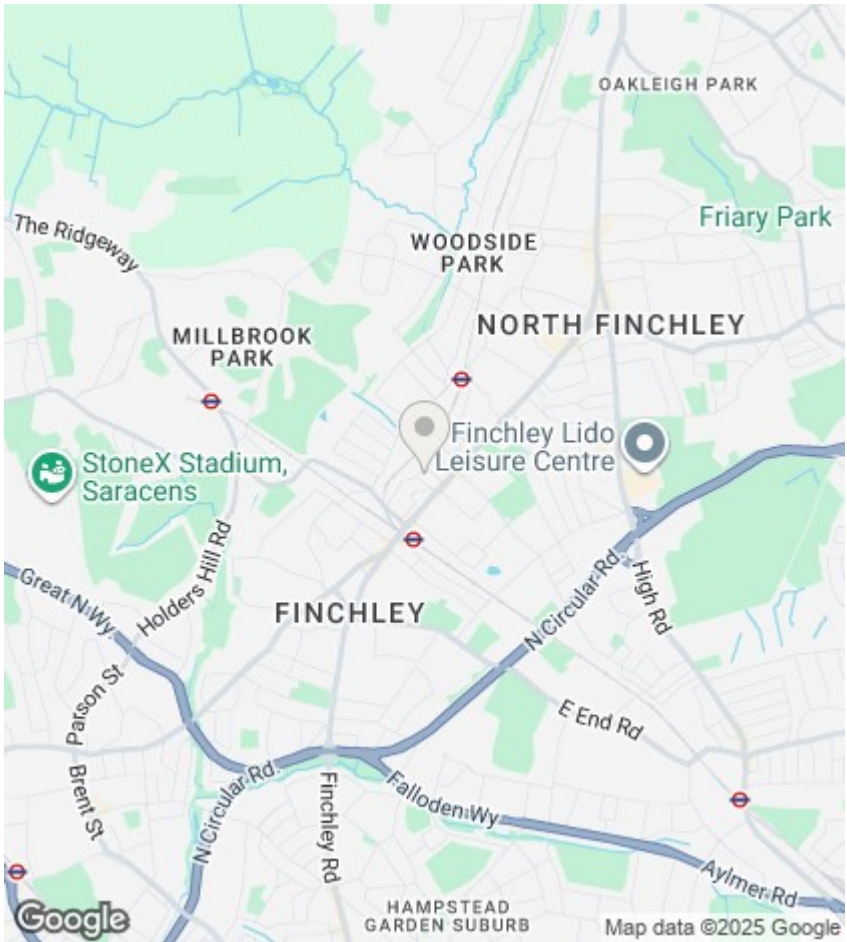
**\*SHARE OF FREEHOLD\*** We are pleased to offer this bright two bedroom, two bathroom ground floor flat in a house conversion. Conveniently located just 0.1 miles to the local shops, amenities and transport links of Finchley Central and just 0.3 miles from Finchley Central Underground Station. The property benefits from a modern bathroom and en-suite, open plan reception / kitchen with fitted appliances, and a private rear garden with part lawn and part decking. Council Tax Band - D



Council Tax Band: D







### Directions

### Viewings

Viewings by arrangement only. Call 020 8446 4295 to make an appointment.

EPC Rating:  
E

Energy Efficiency Rating		Current	Potential
Very energy efficient - lower running costs			
(92 plus) A			
(81-91) B			
(69-80) C			75
(55-68) D			
(39-54) E		46	
(21-38) F			
(1-20) G			
Not energy efficient - higher running costs			
England & Wales		EU Directive 2002/91/EC	

