



CHRIS DURRANT
— ESTATE AGENTS —

exp

Denton Drive, Hanslope, MK19 7GB

Offers Over £425,000

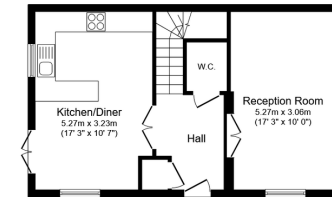
3 2 1

- No upward chain
- Detached home
- Village location
- Well presented throughout
- En suite to Master bedroom
- Garage and parking
- Good schools close by
- Integrated appliances

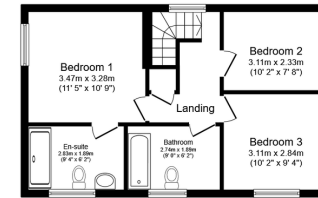


Being sold with no upward chain is this stunning three bedroom detached family home with delightful private garden, garage and driveway parking with EV charge point, ideally situated in the sought after village of Hanslope on the first phase of the prestige Hayfield development. The property has been beautifully maintained, giving bright and spacious accommodation with stylish interiors, neutral decor and high quality finish throughout. Flowing, well planned accommodation, flooded with natural light, creates this beautiful home. Features including an impressive double length reception room, well equipped kitchen/diner with range of 'Bosch' appliances, first floor family bathroom, principal en-suite and guest WC, 'Karndean' flooring with underfloor heating, double glazing, and ample inbuilt storage.





Ground Floor



First Floor

Total floor area: 89.6 sq.m. (954 sq.ft.)

This floor plan is for illustrative purposes only. It is not drawn to scale. Any measurements, floor areas (including any total floor area), openings and orientations are approximate. No details are guaranteed, they cannot be relied upon for any purpose and do not form any part of any agreement. No liability is taken for any error, omission or misstatement. A party must rely upon its own inspection(s). Powered by www.Propertybox.io

Energy performance certificate (EPC)

6 Danton Drive Heston MIDDLESEX M20 7UB	Energy rating B	Valid until: 20 February 2032 Certificate number: 2391-6021-8323-4762-0214
Property type Total floor area	Detached house 91 square metres	

Rules on letting this property

Properties can be let if they have an energy rating from A to E.

You can read [guidance for landlords on the regulations and exemptions](https://www.gov.uk/guidance/domestic-private-rented-property-minimum-energy-efficiency-standards-guidance) (<https://www.gov.uk/guidance/domestic-private-rented-property-minimum-energy-efficiency-standards-guidance>).

Energy rating and score

This property's energy rating is B. It has the potential to be A.

[See how to improve this property's energy efficiency.](#)



The graph shows this property's current and potential energy rating.

Properties get a rating from A (best) to G (worst) and a score. The better the rating and score, the lower your energy bills are likely to be.

For properties in England and Wales:
 the average energy rating is D
 the average energy score is 60