



Daywell Rise | Rugeley | WS15 2RE

Offers Over £190,000



Summary

** POPULAR LOCATION ** IDEAL FOR FIRST TIME BUYERS ** CLOSE TO SCHOOLS & AMENITIES ** SHORT DISTANCE TO CANNOCK CHASE ** THREE BEDROOMS ** LIVING ROOM ** KITCHEN DINER ** BATHROOM ** REAR GARDEN WITH GARAGE ** VIEWING ADVISED **

WEBBS ESTATE AGENTS are pleased to market this well presented three bedroom semi detached home, located in a popular area of Rugeley on Daywell Rise. The property would be ideally suited to a first time buyer looking to get their foot on the property ladder. Located close to amenities, useful transport links, schools and a short distance to Cannock Chase. The internal accommodation briefly comprises; entrance hallway, living room, kitchen diner, three bedrooms and a family bathroom. The property also benefits from a good size rear garden and detached single garage.

Key Features

- POPULAR LOCATION
- CLOSE TO SCHOOLS & AMENITIES
- THREE BEDROOMS
- KITCHEN DINER
- REAR GARDEN WITH GARAGE
- IDEAL FOR FIRST TIME BUYERS
- SHORT DISTANCE TO CANNOCK CHASE
- LIVING ROOM
- BATHROOM
- VIEWING ADVISED

Rooms and Dimensions

Entrance Hallway

Lounge

15'9" x 16'4" (4.82 x 4.98)

Kitchen

10'1" x 16'2" (3.08 x 4.93)

Landing

Bedroom One

13'10" x 9'10" (4.24 x 3.02)

Bedroom Two

11'9" x 8'6" (3.60 x 2.60)

Bedroom Three

8'8" x 7'7" (2.66 x 2.32)

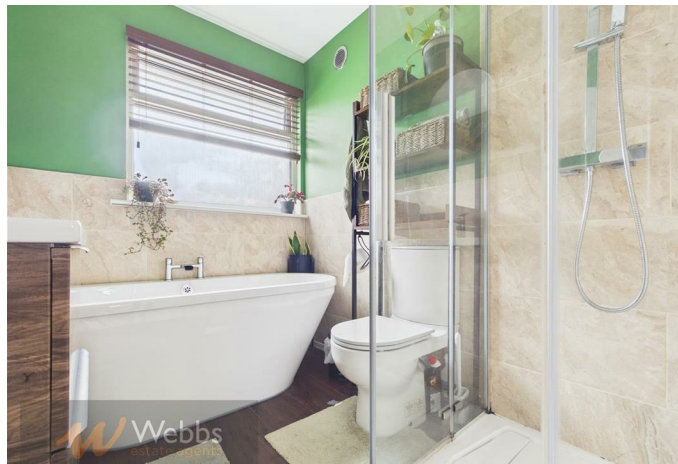
Bathroom

7'8" x 6'2" (2.34 x 1.90)

Front & Rear Gardens

IDENTIFICATION CHECKS - C







Webbs Estate Agents - endeavour to maintain accurate depictions of properties in Virtual Tours, Floor Plans and descriptions, however, these are intended only as a guide and purchasers must satisfy themselves by personal inspection.

