

The logo for Ashtons, featuring the word "Ashtons" in a white, sans-serif font with a green swoosh under the letter 'A', set against a dark blue rectangular background.

P
Permit holders
R20
or
10 mins
No return within
1 hour

Flat B 4 Marlborough Grove YO10 4AY

£1,025 Per Month

2



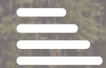
1



1

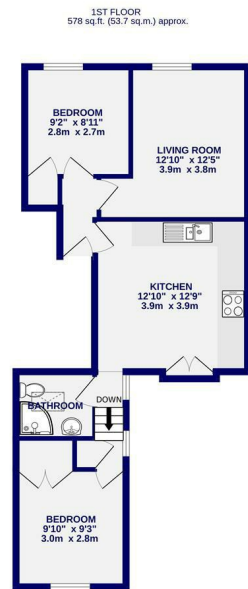


C



WE ARE NOW FULLY BOOKED FOR VIEWINGS ON THIS PROPERTY A two bedroom first floor flat within walking distance to the city centre, just off Fishergate. Offered unfurnished the accommodation briefly comprises of entrance hall; spacious kitchen with electric oven, hob, fridge freezer, plumbing for washing machine and a Juliette balcony; living room; two bedrooms, both with storage cupboards and a shower room.

Available Now / 12 Month Tenancy / Deposit £1095 / Council Tax Band A / EPC Rating C



TOTAL FLOOR AREA: 578 sq.ft. (53.7 sq.m.) approx.
While every effort has been made to ensure the accuracy of the floorplan, measurements of rooms and any other areas are approximate. It is advised that you check the measurements with your agent if you are considering this property. The floorplan is for information only and should be used as a guide only. The actual layout, fixtures, fittings, and appliances shown may differ from those shown and are subject to change without notice.
Made with Metago 2023



Ashtons Lettings



01904 731404



lettings@ashtonsnet.com

