



**Great Eastern Road, London E15**  
£475,000 Leasehold







## Description

Positioned in one of Stratford's most popular developments, this one-bedroom apartment at Stratosphere Tower presents an exceptional opportunity for modern city living in one of East London's most dynamic neighbourhoods.

Spanning approximately 573 square feet, this south-facing apartment enjoys abundant natural light throughout the day, creating a bright and welcoming atmosphere. The modern interior features contemporary finishes that complement the building's architectural vision, whilst the thoughtful layout maximises space and functionality. The development's comprehensive amenities elevate everyday living, with 24-hour concierge service providing security and convenience, a well-equipped residents' gym for maintaining an active lifestyle, and a residents' lounge offering communal space for work or relaxation.

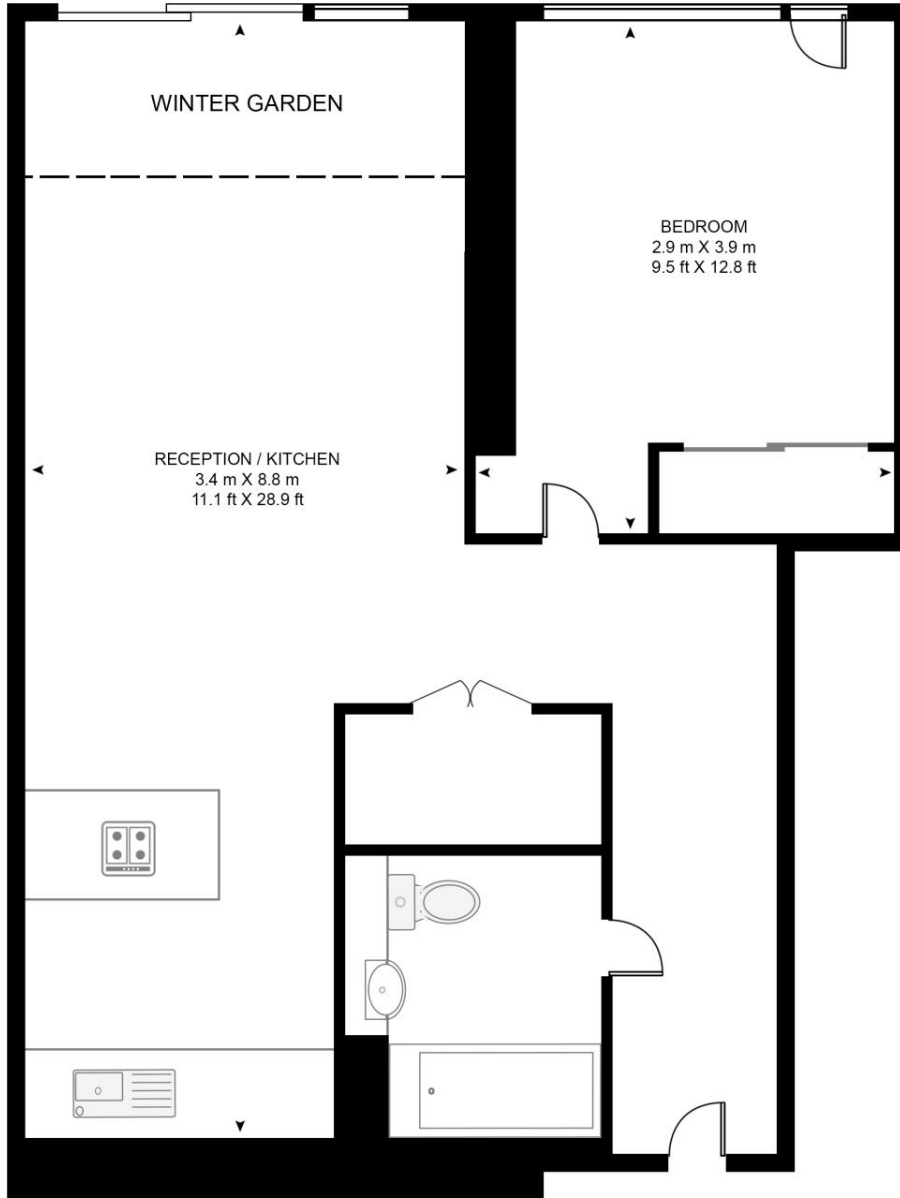
- South-facing apartment
- 24-hour concierge
- Residents' gym
- 24th Floor with lift access
- Communal roof terrace
- Stratford Station nearby
- Westfield Stratford City
- Queen Elizabeth Olympic Park
- Approx. 573 sq. ft (53.2 sq. m)
- EPC: B

# Floorplan

573 sq ft | 53 sq m

## STRATOSPHERE TOWER

APPROXIMATE GROSS INTERNAL FLOOR AREA 573 SQ.FT (53.2 SQ.M)



TWENTY FOURTH FLOOR



This floor plan has been defined by the RICS Code of Measurement. This floor plan and all others are for approximate representative purposes only and upon usage is agreed to as such by the client.

WWW: [hdvirtualart.com](http://hdvirtualart.com) | TEL: 0203.974.1567 | EMAIL: [info@hdvirtualart.com](mailto:info@hdvirtualart.com)

Stratford  
5 Station Street,  
London E15 1DA  
+4420 3147 1500  
[Lettingsstratford@eu.jll.com](mailto:Lettingsstratford@eu.jll.com)

*Urban living, your way.*

[jll.co.uk/residential](http://jll.co.uk/residential)

© 2019 Jones Lang LaSalle IP, Inc. All rights reserved. All information contained herein is from sources deemed reliable; however, no representation or warranty is made to the accuracy thereof.

