



Modern Auction

£120,000
Leasehold

1x 🏠 1x ↻ 1x 🚗

High Street, Horley,
Surrey, RH6

cubitt & west
Helping you move forwards



Main features

- No chain
- For Sale by Modern Auction - T&Cs apply
- Subject to an undisclosed reserve price
- Buyer's fees apply
- Close to amenities



Accommodation

FIRST FLOOR

Entrance Hallway

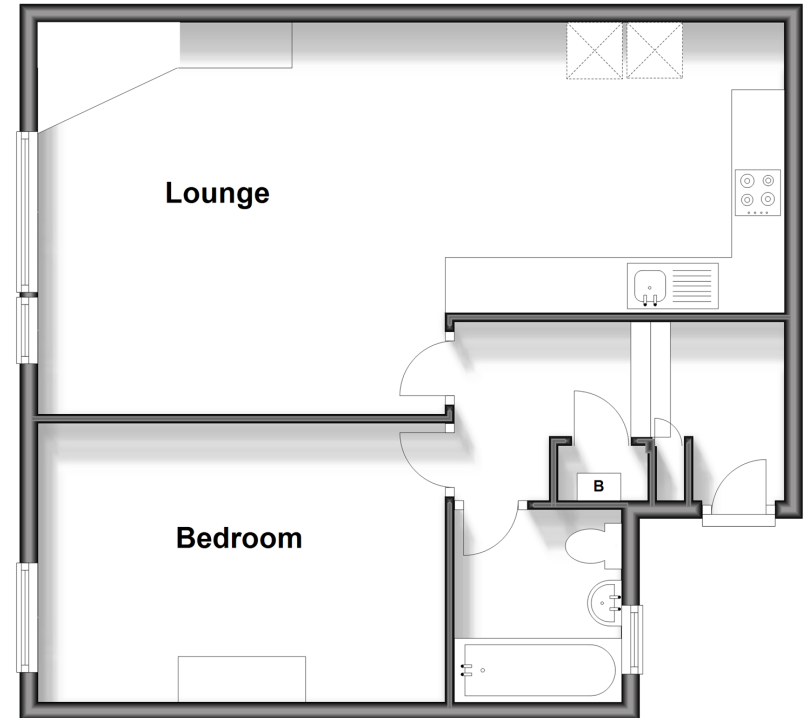
Kitchen / Lounge: 25'6 x 14'1 (7.78m x 4.30m)

Bedroom: 13'0 x 9'0 (3.97m x 2.75m)

Bathroom: 6'11 x 5'10 (2.11m x 1.78m)



First Floor
Approx. 57.2 sq. metres (615.4 sq. feet)



Call Horley - 01293 785338 ■ cubittandwest.co.uk

- If buying to let, the energy rating will need to be improved to at least 'E' rating before you can let the property
- Legal advice should be taken to verify fixtures/fittings, planning, alterations and/or lease details
- Appliances & services are untested, dimensions are approximate and floor plans are not to scale



20811051/20250605/SI/BG