






87 Turves Road, Cheadle Hulme

Offers In Region Of £425,000

 2  2  4

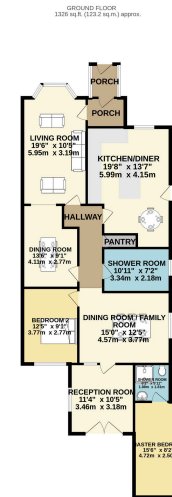
- Detached Bungalow
- Extensive Accommodation Extending to circa 1300 sq ft.
- No Onward Vendor Chain.
- Extended to the side and rear.
- Large Breakfast Kitchen with Island.
- Fantastic Location Close to Cheadle Hulme.
- Extensive Driveway.
- Four Reception Rooms.
- Vast Rear Gardens with Numerous Outbuildings.
- Tenure - Freehold / EPC - TBC / Council Tax Band - D



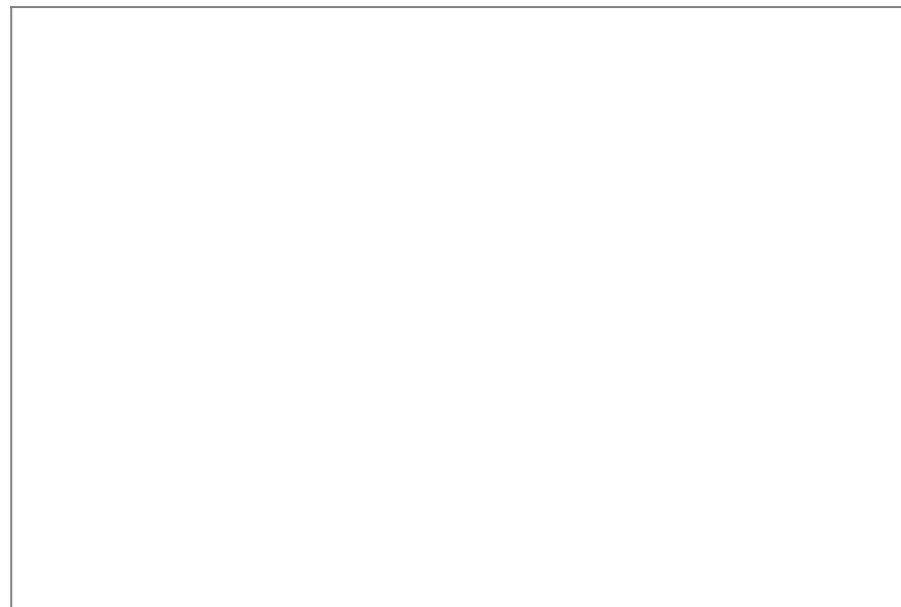
Summary:

A unique and substantially extended detached bungalow in the sought-after area of Cheadle Hulme, offering approximately 1,326 sq ft of versatile single-level living space. The property features two double bedrooms, two bathrooms (including an en-suite), four flexible reception rooms, and a spacious breakfast kitchen with an island and fitted cabinetry. Outside, there is a large driveway providing ample parking and a generous garden ideal for relaxation, gardening, and entertaining. This is an excellent opportunity to purchase a spacious and adaptable home in a desirable location.





TOTAL FLOOR AREA: 120 sq ft (11.1 sq m)
 Whilst every effort has been made to ensure the accuracy of the floorplan contained herein, responsibility for errors, omissions, misprints or any other inaccuracies or omissions remains with the advertiser. The advertiser warrants that the information contained herein is true and correct to the best of their knowledge and belief. The advertiser warrants that the information contained herein is true and correct to the best of their knowledge and belief. The advertiser warrants that the information contained herein is true and correct to the best of their knowledge and belief.



9 Gatley Road, Cheadle, Cheshire SK8 1LY Tel. 0161 428 1488 Fax. 0161 428 1479
 Email. mail@andrewdawson.co.uk