



Flat

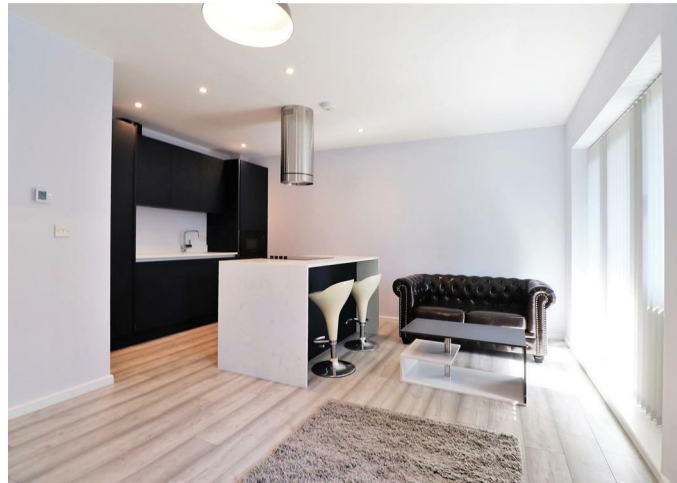
FLAT 6 CARPENTERS COURT WELLING HIGH STREET,

Per Month

£1,800

FEATURES

- 2 bedroom apartment on Welling high street
- Family bathroom and ensuite
- Balcony
- Open plan kitchen and Dining area
- Car parking space



BEXLEY HOMES

2 Bedroom Flat located in Welling

A stunning 2 bedroom 2 bathroom apartment on Welling High Street.

Contact for viewing

Call us on

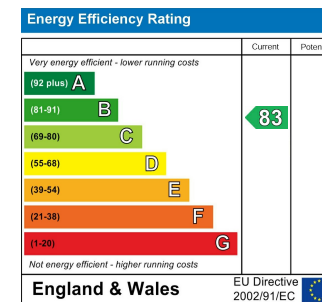
01322 948500

Belvedere@bexleyhomes.co.uk

www.bexleyhomes.co.uk

Council Tax Band

C



Agents Note: Whilst every care has been taken to prepare these particulars, they are for guidance purposes only. All measurements are approximate and are for general guidance purposes only and whilst every care has been taken to ensure their accuracy, they should not be relied upon and potential buyers are advised to recheck the measurements.

BEXLEY HOMES