



Kingston Road, SW19

£550,000

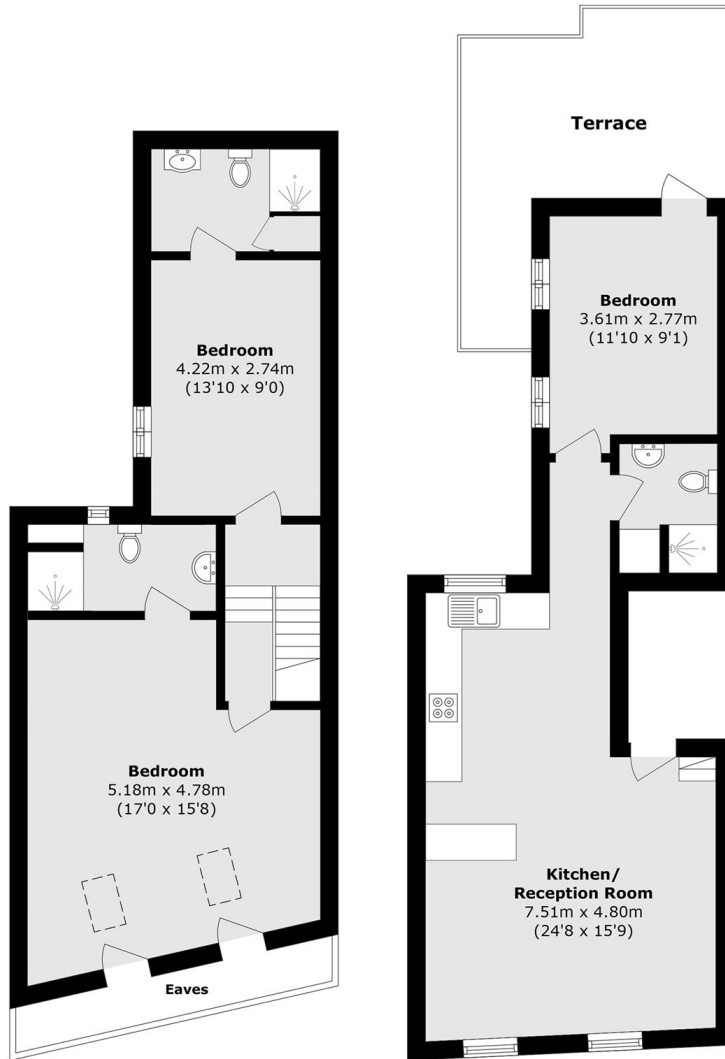
An exceptionally well proportioned three bedroom, three bathroom split level apartment with a large garden terrace. The property is being sold with a new lease and with no onward chain.

Conveniently situated close to Wimbledon Town Centre, just moments away from Wimbledon Tube and Overground Station and a great range of restaurants and bars.

Features

- Three Double Bedrooms
- Three Bathrooms
- Split Level
- Private Terrace
- New Lease
- No Onward Chain

Kingston Road,
London, SW19



First Floor

Second Floor

Total area (approx.): 98.4 sq. m (1059.1 sq. ft)

Terrace area (approx.): 16.7 sq. m (179.7 sq. ft)

(Excluding Eaves)