



Harmood Grove, NW1

£525,000

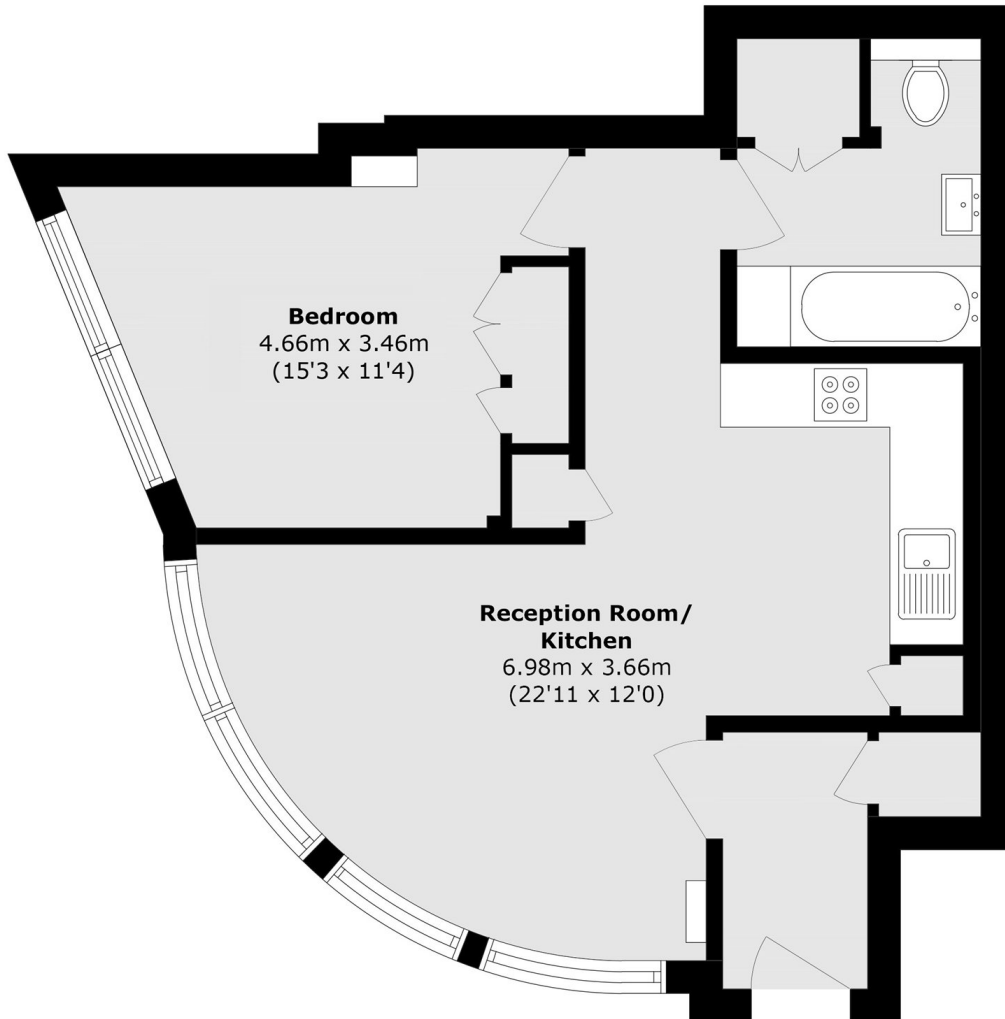
A stylish and very well presented one double bedroom apartment situated on the ground floor of this modern gated development. This quiet and naturally bright property has an efficient use of space with its own private entrance and lots of windows letting in lots of natural light.

Harmood Grove is a small cul-de-sac and is in a very good location to take advantage of the excellent amenities of the surrounding areas of Camden, Chalk Farm, Kentish Town, Primrose Hill and Belsize Park.

Features

- One Double Bedroom
- Private Entrance
- Gated Development
- Chain Free
- Leasehold
- Great Location

Harmood Grove, London, NW1



Total area (approx.): 52.1 sq. m (560.8 sq. ft)