



# MOUNTBATTEN PARK

NORTH BADDESLEY

## HOME 58

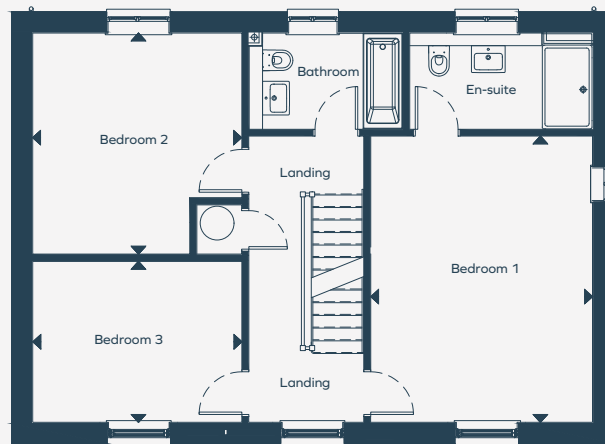
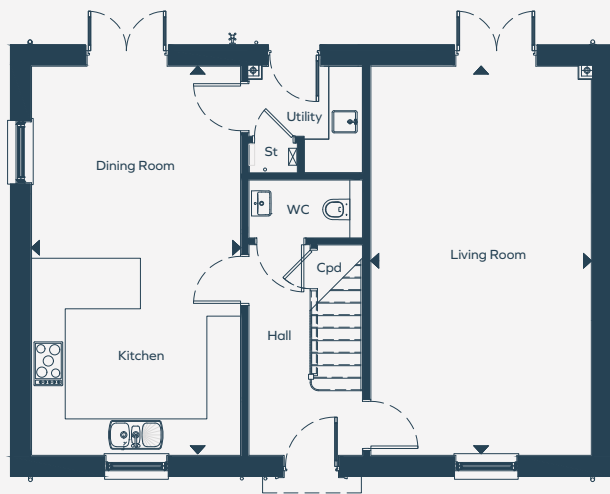
188.4 sq m | 2028 sq ft

A five double bedroom, detached home with garage and driveway parking for two vehicles.

### FEATURES INCLUDE:

- Fully fitted, modern kitchen with spacious dining area and external doors
- Bright, dual aspect living room with doors onto the rear garden
- Utility room with external access
- Master bedroom with dressing room and en-suite bathroom
- Two family bathrooms plus downstairs cloakroom





## GROUND FLOOR

**Kitchen / Dining Room**  
6.93m x 3.74m    22' 6" x 12' 1"

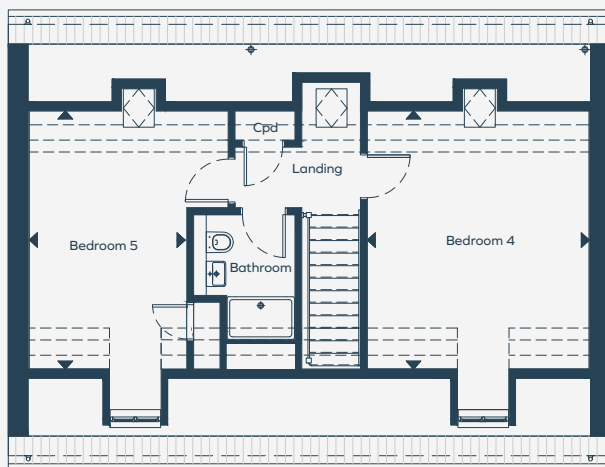
**Living Room**  
6.93m x 3.94m    22' 6" x 12' 7"

## FIRST FLOOR

**Bedroom 1**  
3.95m x 5.10m    12' 9" x 16' 7"

**Bedroom 2**  
3.93m x 3.72m    12' 7" x 12' 1"

**Bedroom 3**  
3.72m x 2.86m    12' 2" x 9' 1"



## SECOND FLOOR

**Bedroom 4**  
4.60m x 3.95m    15' 1" x 12' 9"

**Bedroom 5**  
4.60m x 3.54m    15' 1" x 11' 6"