



## Willow Place, SW1P

£600 Per week

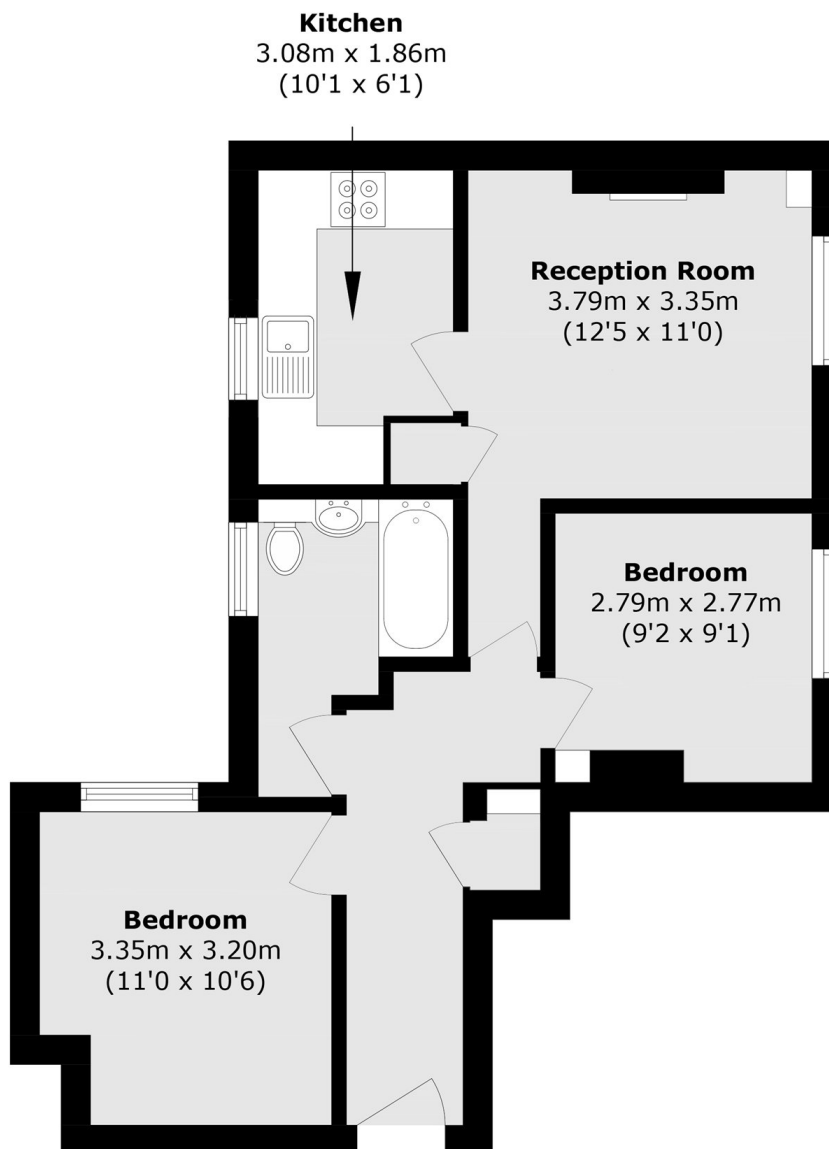
This well arranged two bedroom apartment is set on the third floor of a handsome building and is presented in good condition with period features and a separate kitchen

Willow Place is quietly set back from the main road with easy access to Victoria and St James's Park. A collection of local supermarkets and shops are available along Wilton Road.

### Features

- Light reception with feature fireplace
- Two double bedrooms
- Ample storage with cupboards to reception and entrance
- Period building close to shops

# Willow Place, London, SW1P



Total area (approx.): 50.1 sq. m (539.2 sq. ft)