



56 Windermere Drive
Corby, Northamptonshire NN18 8SS



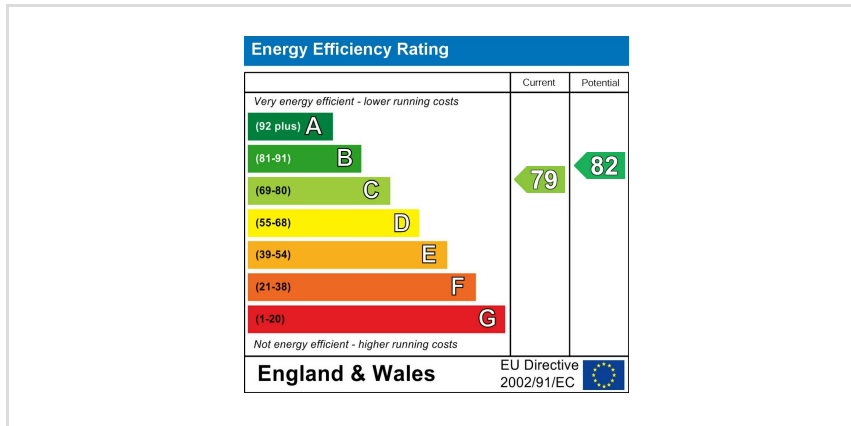
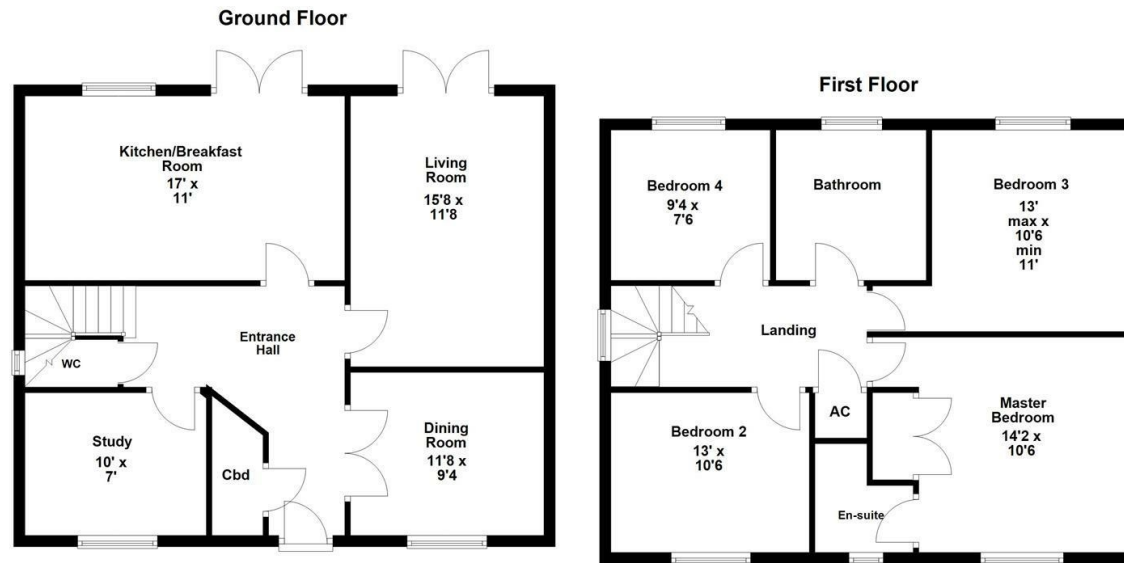
Simpson West

Enjoying an attractive position within this popular cul-de-sac which can be found within the sought after Oakley Vale, is this beautifully presented detached property which provides deceptively spacious accommodation which simply must be seen if it is to be appreciated. This light and airy family home offers a smart floorplan which includes a large reception hall, cloakroom/WC, living room, separate dining room, study, and a superb, refitted kitchen/breakfast room which incorporates a range of integrated appliances. The first floor boasts an attractive landing which provides access to FOUR well proportioned bedrooms with the master enjoying fitted wardrobes and en-suite facilities, there is also a four-piece family bathroom suite. Outside, there is an easy maintenance frontage with a driveway set to the left-hand side which provides OFF ROAD PARKING for two vehicles and leads to the GARAGE. The rear garden is of good size has been designed with easy maintenance in mind and offers three patio areas with a private decked patio set to one corner with a synthetic lawn set in front. An early visit is strongly advised if genuine disappointment is to be avoided!
Council Tax Band E. Energy Rating C.

£360,000

 4  2  2





When you buy with Simpson West, you know **you'll be in safe hands**. From the moment you walk through our doors, we'll make you **feel truly welcome**. Our sales consultants and financial advisors will take you through **every step of the process**, offering **free expert advice** along the way, from help choosing the right mortgage and insurance through to finding your conveyancer. And if you need help selling your home too, **with over 20 years of local experience, you can trust us to get you moving**.



**Simpson
West**

Making Every
Journey Personal



01536 202007

info@simpsonwest.co.uk

<https://www.simpsonwest.co.uk/>

64 Corporation Street, Corby, Northants, NN17 1NH