

1
BED

A One Bedroom Ground Floor Flat With Parking

Flat 2 Church Hill Lodge, Church Hill, Newhaven, BN9 9LQ

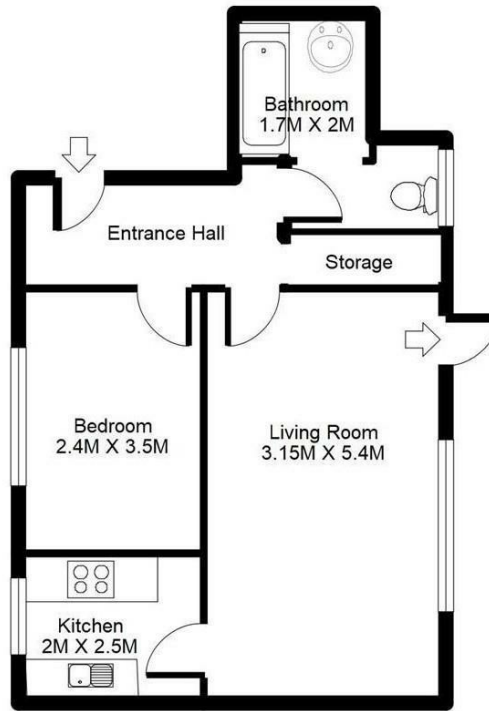


Offers Over £155,000

Leasehold

phillipmann
we do more

www.phillipmann.com



inbrief...

Phillip Mann estate agents are delighted to offer for sale this spacious one bedroom ground floor flat forming part of the older style building in Newhaven. The property is in good condition throughout and also comes with allocated parking.

A communal entrance hall has a private entrance door which leads to flat 2. The entrance hall has a storage area and doors, small loft space and doors which lead to the accommodation. The lounge/diner is a lovely bright room which has ample space for a dining table and patio doors gives access to a small patio area. An opening gives access to the kitchen which has a range of wall and base units which incorporates a selection of cupboards and drawers. There is a built in sink unit, along with a cooker and gas hob. There is appliance space for fridge/freezer and washing machine. The room is complete with part tiled walls and a window overlooks the front. The bedroom is a good size double which has space for wardrobes and a large window overlooks the front, Completing the property is a bathroom which is fitted with a white suite comprising of a paneled bath, wash hand basin and WC.

Outside there is a small patio area with steps leading up to the rear parking area.

There is also a allocated parking space.



Energy Rating D

Council Tax A

moreinfo...

Phillip Mann Newhaven Office
16 Bridge Street, Newhaven, BN9 9PJ
01273 517517



To see more details on this & all our homes go to
www.phillipmann.com