



BROAD STREET, B15

£250,000

Modern sixth-floor, two-bedroom, one-bathroom apartment within the prestigious St Martins Place development. The property offers a bright open-plan living and dining area with floor-to-ceiling windows, a contemporary fitted kitchen with integrated appliances, two well-proportioned double bedrooms, and a stylish bathroom finished to a high specification.

- Offers over £250,000
- Two bedrooms
- 751 sq ft
- Open plan
- 24 Hour concierge
- Residents gym

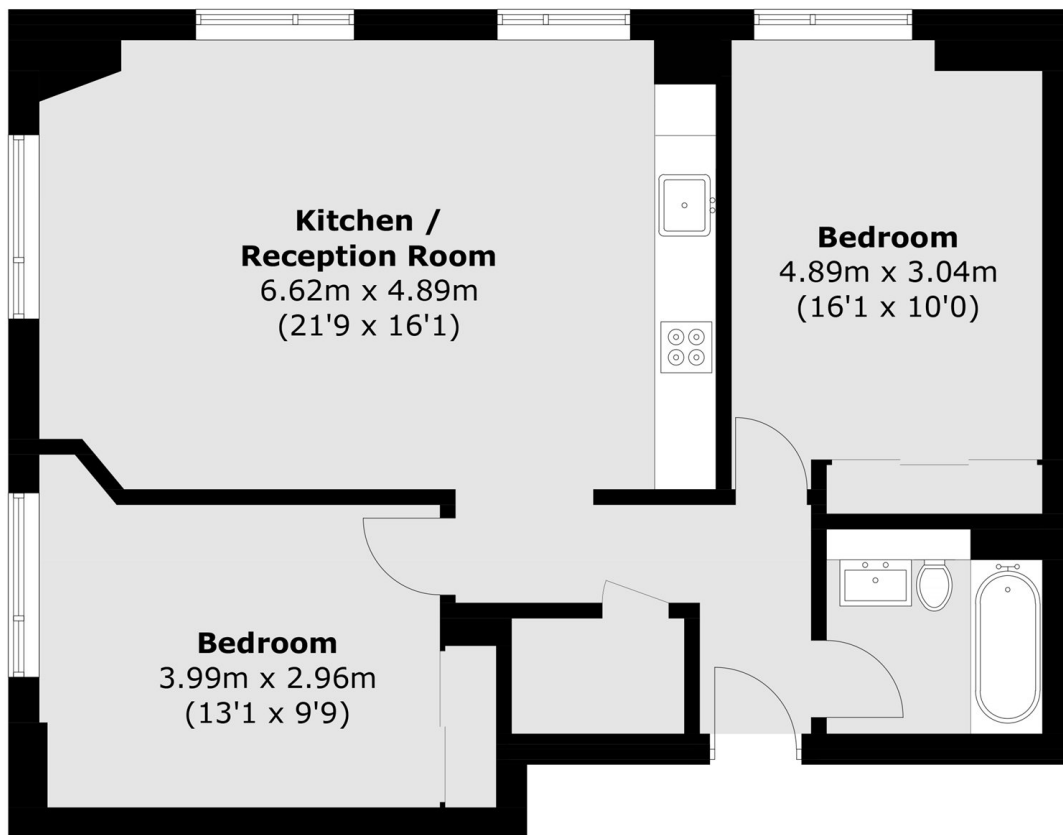


ABOUT THE HOME

The development is ideally located within walking distance of Birmingham city centre, Five Ways station, Brindley place, and major business districts.







Total area (approx.): 69.8 sq. m (751.3 sq. ft)

LiFE RESIDENTIAL

11 Flagstaff House, London,
SW8 2LZ

Sales: 020 7476 1408

Lettings: 020 7582 7989

Energy Rating: . We aim to make our particulars both accurate and reliable. However they are not guaranteed; nor do they form part of an offer or contract. If you require clarification on any points then please contact us, especially if you're traveling some distance to view. Please note that appliances and heating systems have not been tested and therefore no warranties can be given as to their good working order.