



Belgrave Road  
Barnes, SW13

CHESTERTONS





A fine semi-detached, double-fronted family home with excellent lateral accommodation, set over three floors, with a large garden and off-street parking.

This well-presented family home has been extended and upgraded over the years and now offers just over 3,000 sq. ft. of internal space (including the studio). It boasts a spacious, open-plan kitchen and reception room, with multiple living areas, at the back of the house leading onto the garden. To the front, there is a wide entrance hall and formal reception room.

On the first floor, there are four double bedrooms, including a principal bedroom with ensuite bathroom and fitted wardrobes, and a further main bathroom. On the top floor, there is a generous bedroom with an ensuite bathroom, plenty of fitted wardrobes and extensive eaves storage space.

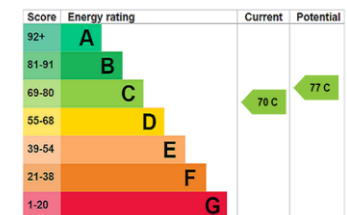
Barnes is a small community with a beautiful village at its heart. The village perfectly balances city and country-style living, thanks to its easy London transport links and the green spaces of Barnes common, Barnes Green with its famous duck pond, the London Wetland Centre and the world-famous Richmond Park close-by.

An ideal location for families, as the area boasts outstanding state and independent school options, including St Paul's Boys & Juniors, The Harrodian, The Swedish school, St. Osmund's and Lowther primary schools.

Convenient transport links are at nearby Barnes and Barnes Bridge stations, which offer frequent service into London Waterloo; and Hammersmith tube station is just across Hammersmith Bridge (currently open to pedestrians and cycles).

- Wonderful Semi-Detached House
- Generous Garden
- Separate Studio
- Five Bedrooms
- Off-Street Parking
- Cul-de-Sac Location

Asking Price £2,950,000



**Tenure:** Freehold

**Local Authority:** London Borough of Richmond upon Thames

**Council Tax Band:** H

**Chestertons Barnes Sales**

68-69 Barnes High Street  
Barnes  
London  
SW13 9LD

barnes@chestertons.co.uk

020 8748 8833

chestertons.co.uk

# Belgrave Road, SW13

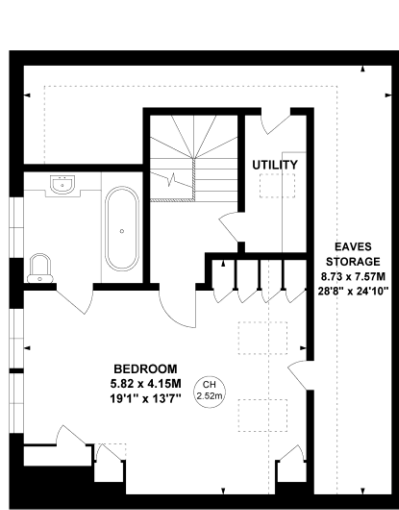
Approximate gross internal area

287.95 sq m / 3099 sq ft

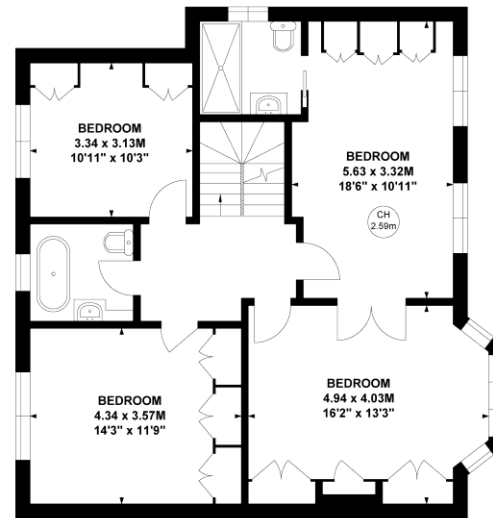
(Including Eaves Storage & Studio)

Eaves Storage : 21.94 sq m / 236 sq ft

Studio : 19.60 sq m / 211 sq ft

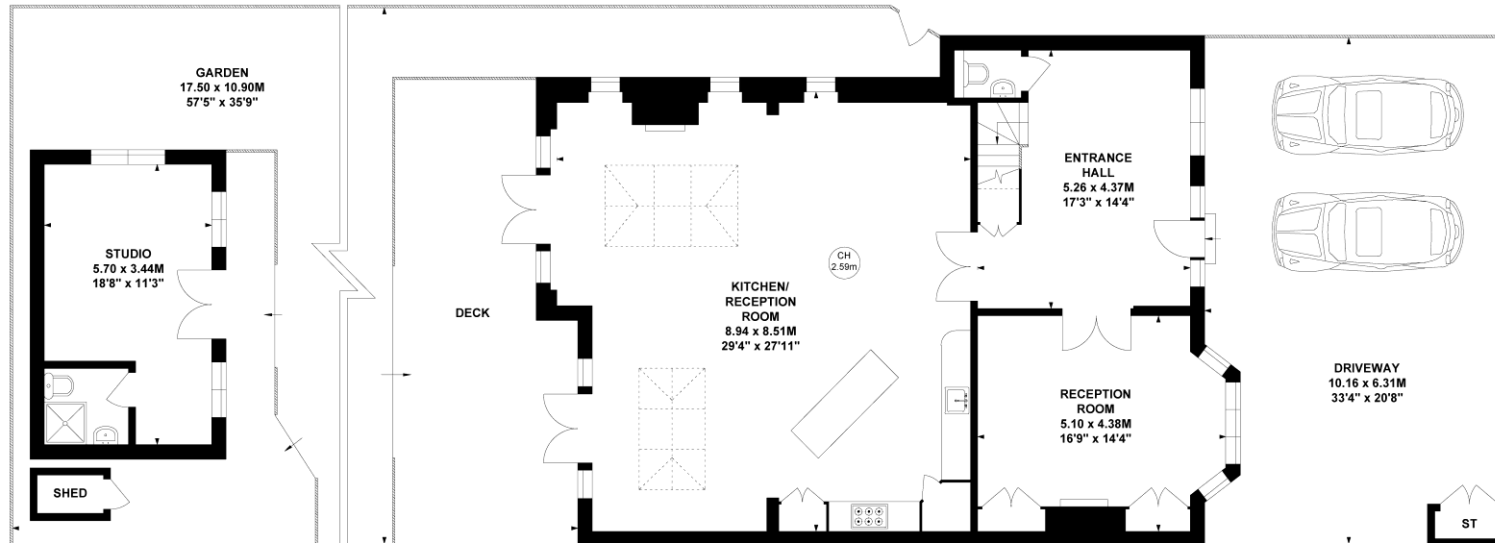


Second Floor



First Floor

Key :  
CH - Ceiling Height



Ground Floor

Not to scale, for guidance only and must not be relied upon as a statement of fact.  
All measurements and areas are approximate only

