



Latimer Square, SE10

£530,000

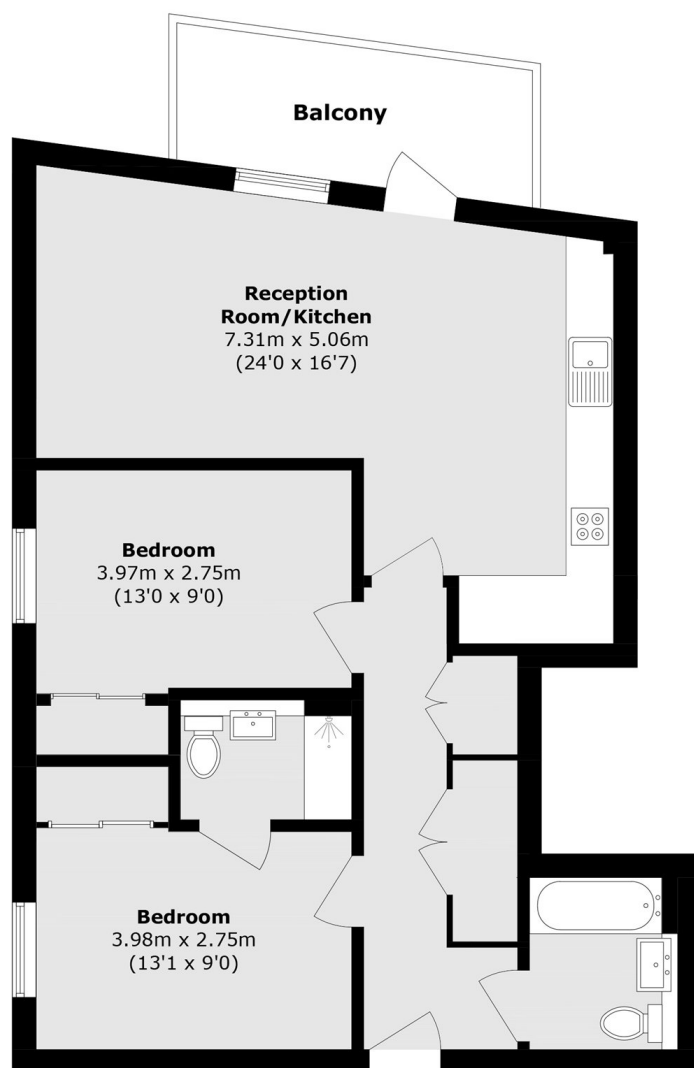
A well presented two bedroom, two bathroom modern flat situated in a sought after location further benefiting from a private balcony and a private parking space.

The apartment is located within walking distance of the O2 which hosts a wide selection of bars, restaurants and cinema, The Emirates cable car is also nearby. North Greenwich tube station provides links to Canary Wharf and London Bridge. Charlton and Westcombe Park overground. Greenwich Millennium Village features an abundance of landscaped green areas and riverside walkways. The development has a health centre, primary school and local shopping facilities. Retail outlets as well as the local shopping facilities. There are excellent transport links with easy access onto the A102, A2 and A13.

Features

Modern
Two Double Bedrooms
Two Bathrooms
No Work Required
Private Balcony
Sought After Location

Latimer Square, London, SE10



Total area (approx.): 75.8 sq. m (815.9 sq. ft)

Balcony area (approx.): 7.7 sq. m (82.8 sq. ft)