



# Parkview Road, Sheffield, S6 2AU

Offers Over £115,000

3 1 1



### Why You'll Love It

Set within a peaceful position overlooking green space, this charming ground floor maisonette immediately impresses with its sense of space and homely feel. The entrance hallway provides a warm welcome and leads through to a light-filled open-plan living and dining area — a versatile space perfect for relaxing evenings or entertaining guests. A door opens directly onto a private seating area, offering a lovely spot to enjoy morning coffee or unwind while taking in the pleasant outlook.

The kitchen sits to the front of the property, well arranged with ample worktop and storage space, making it both practical and functional for everyday use.

Upstairs, the property continues to deliver with two generous double bedrooms and a comfortable single bedroom, ideal for a home office, nursery, or guest room. A neatly presented family bathroom serves the accommodation, completing the internal layout.

Throughout, the home has clearly been well cared for, allowing a buyer to move straight in while still offering potential to personalise over time. Its flexible layout and appealing setting make it an excellent choice whether you're stepping onto the property ladder, looking to downsize, or seeking a solid investment opportunity.

### Why We Love It

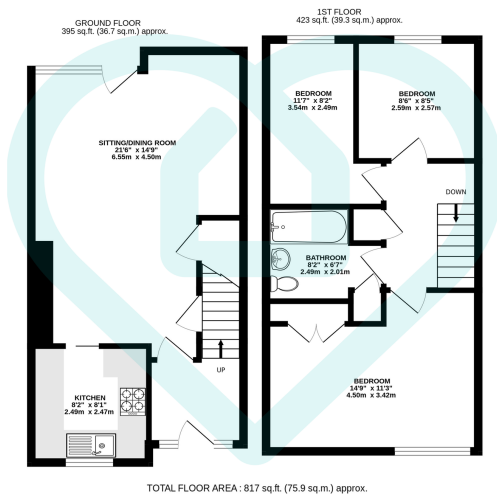
Hillsborough is one of Sheffield's most popular and well-connected suburbs — and it's easy to see why. With a vibrant high street, excellent transport links including the Supertram, and a wide range of independent shops, cafés, and amenities, everything you need is right on your doorstep.

For those who enjoy the outdoors, the area offers fantastic access to green spaces including Hillsborough Park and nearby walks along the River Don, while the stunning Peak District is just a short drive away.



Families and professionals alike are drawn to the area for its strong sense of community and convenient access into Sheffield city centre. Whether it's weekend brunch spots, local pubs, or scenic walks, Hillsborough delivers a lifestyle that balances urban convenience with outdoor living.

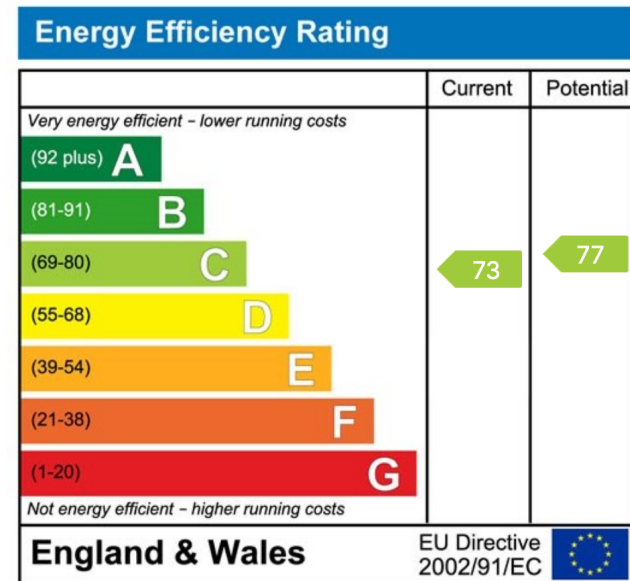
This property's position overlooking green space only enhances that appeal, providing a peaceful setting while remaining close to the heart of the action.



This floor plan is for illustrative purposes only. All measurements and layouts are approximations and do not necessarily capture the precise specifications of the property. No responsibility is taken for any error, omission, or misstatement. We always recommend viewing in person to confirm the exact floor plan of a property. Made with Metropix.



- Ground Floor Maisonette
- Three Bedrooms
- Private Outdoor Seating Area
- Overlooking Hillsborough Park
- Well Proportioned Throughout
- Well Maintained Throughout
- Great For First Time Buyers, Investors or Downsizers
- Popular Hillsborough Location
- Close To Shops, Green Space, Local Amenities
- Great For Commuting



### Sales | Lettings | New Homes

VAT Reg Number: 191 3588 84  
Company Reg Number: 08610489  
Company Reg Address: 67 Middlewood Road, Hillsborough, Sheffield, S6 4GX.

The MorfittSmith Building  
67 Middlewood Road  
Hillsborough  
Sheffield  
S6 4GX

### Get in touch - arrange an appointment



0114 232 1764  
sales@morfittsmith.co.uk  
lettings@morfittsmith.co.uk  
newhomes@morfittsmith.co.uk  
www.morfittsmith.co.uk



@MorfittSmith  
@MorfittSmith  
MorfittSmith  
Estate & Letting Agent