



Britton Street, EC1M

£475,000

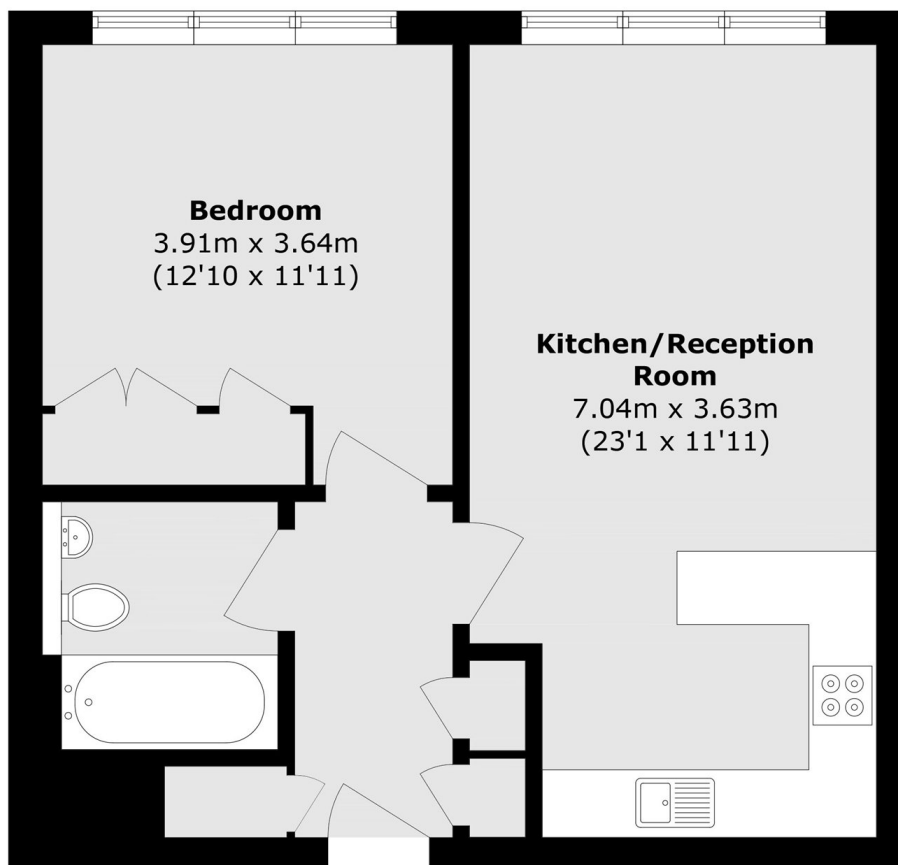
A large one-bedroom apartment located in City Pavilion, a sought-after development located close to the City. The apartment has a spacious open-plan kitchen/living room, double bedroom and bathroom. The residents benefit from large windows throughout, allowing plenty of natural light and a 24-hr Concierge.

City Pavilion has access to a range of transport links. Farringdon underground and main line station provide access to the Circle, Metropolitan, Hammersmith and City, National Rail and Elizabeth Line, making it one of the only stations in London that offers north-south as well as east-west connections. With great shopping and a tremendous diversity of acclaimed restaurants, bars, galleries and wine bars, Clerkenwell remains one of London's most sought-after and convenient locations.

Features

- Secure Entry
- Lift Access
- 24 Hour Porter
- Wooden Flooring
- Bike Storage
- Fifth Floor

Britton Street,
London, EC1M



Total area (approx.): 52.0 sq. m (559.7 sq. ft)