



Sapphire Court, Bradford Street, Digbeth

£1,350 per month



Key Features

- Brand new apartment
- Never previously occupied
- Available immediately
- Unfurnished
- Two double bedrooms
- Two bathrooms
- Fifth floor
- South-east balcony
- Built-in wardrobes
- Digbeth location



Brand-new two-bedroom apartment available immediately at Sapphire Court. Never previously occupied and offered unfurnished, featuring two bathrooms, south-east facing balcony, en-suite and spacious open-plan living.





An exciting opportunity to become the very first resident of this beautifully finished brand-new apartment within the sought-after Sapphire Court development.

Available immediately, this spacious two-bedroom apartment is offered unfurnished, allowing you to create a home that reflects your own style from day one.

Positioned on the fifth floor, the apartment enjoys a bright open-plan living and kitchen area with direct access onto a private south-east facing balcony, providing excellent natural light throughout the day.

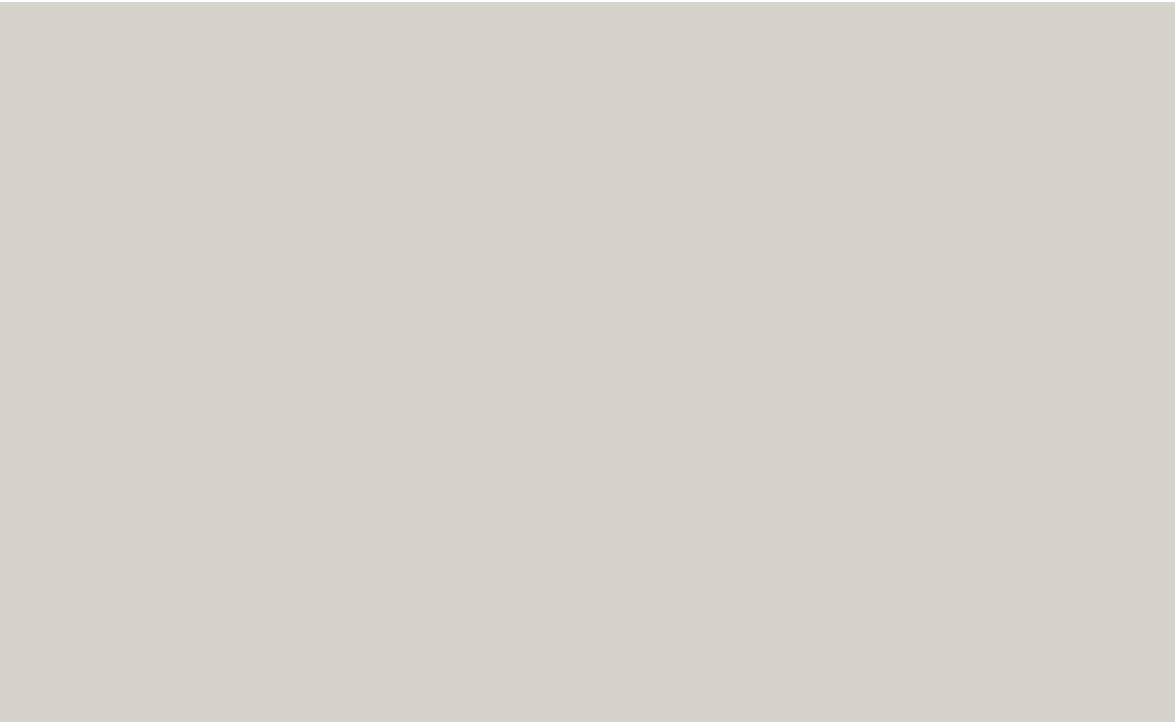
The modern kitchen is finished to an exceptional specification with integrated appliances and contemporary fittings.

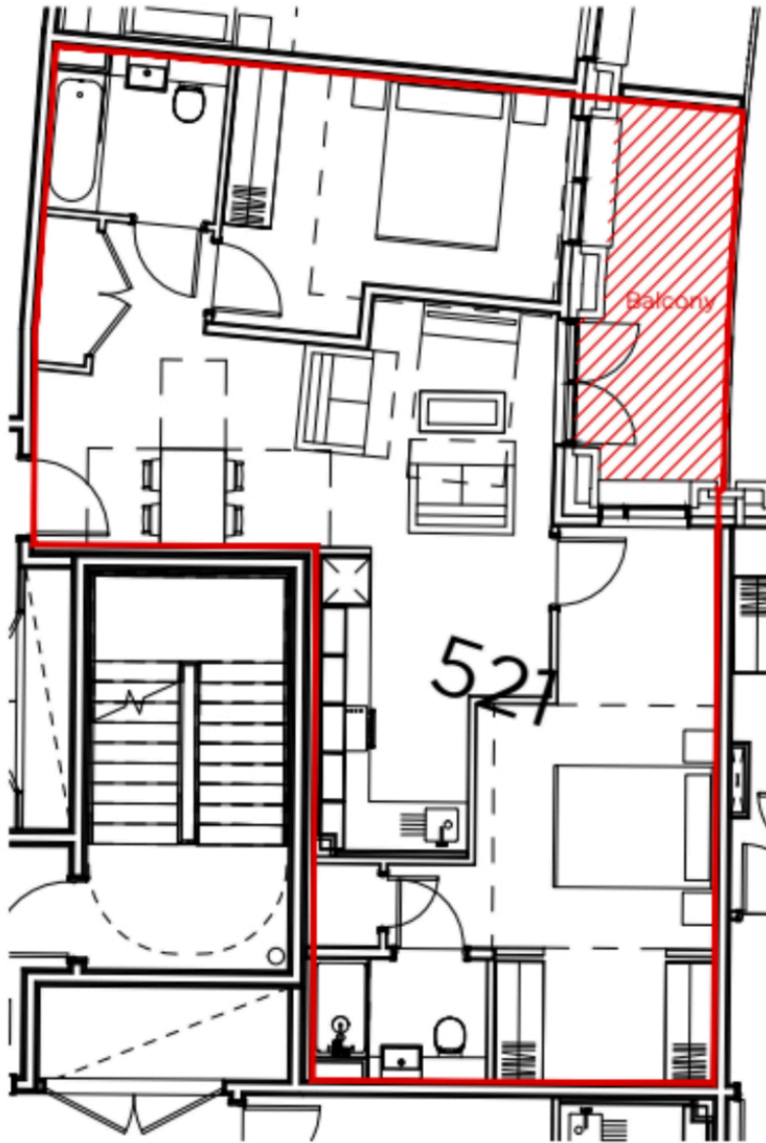
The generous principal bedroom benefits from built-in wardrobes together with a luxurious en-suite shower room, whilst the second bedroom is another excellent-sized double, making the apartment ideal for professional sharers, couples or those working from home.

A stylish family bathroom completes the accommodation.

Sapphire Court enjoys an enviable location in the heart of Digbeth, placing Birmingham's vibrant independent bars, restaurants, creative quarter and transport links all within easy reach.

For more information or to view the apartment, please contact us on 0121 611 1111.





Fifth Floor Plan

Energy Efficiency Rating		Current	Potential
<i>Very energy efficient - lower running costs</i>			
(92+)	A		
(81-91)	B		
(69-80)	C	77	77
(55-68)	D		
(39-54)	E		
(21-38)	F		
(1-20)	G		
<i>Not energy efficient - higher running costs</i>			
England, Scotland & Wales		EU Directive 2002/91/EC	

Tenure Type:
 Council Tax Band:
 Council Authority: