



**Cecilia Road, E8**

**£1,500,000**

**Dexters**



## Cecilia Road, E8

A four bedroom Victorian end of terrace terrace with a private garden. Available for the first time in thirty years, this is an ideal family home in a sought after E8 location. Set over four storeys, this home has been well maintained throughout and offers the opportunity to extend with planning permission in place. It is being sold with no onward chain.

Cecilia Road is within the St Marks Conservation Area and is set to benefit soon from plans to introduce new traffic management measures. The property is located moments away from Ridley Road, Mare Street and Kingsland High Street with an abundance of cafés and local amenities. Dalston Kingsland, Dalston Junction and Hackney Downs Overground stations are all half a mile away providing easy access to the rest of the City and the green spaces of London Fields and Hackney Downs Park are both under one mile away.

### Features

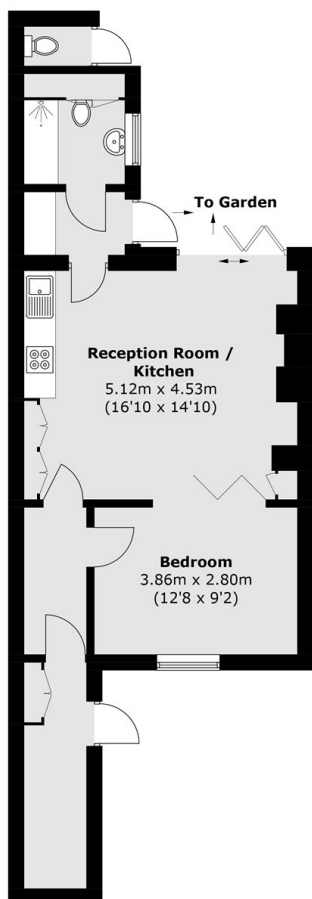
- Victorian End of Terrace
- Four Double Bedrooms
- Three Bathrooms
- Private Garden
- Planning Permission
- Chain Free



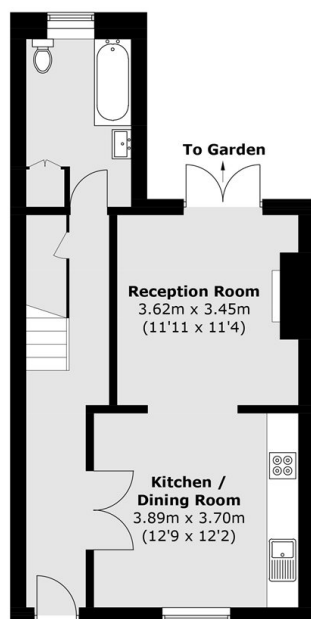




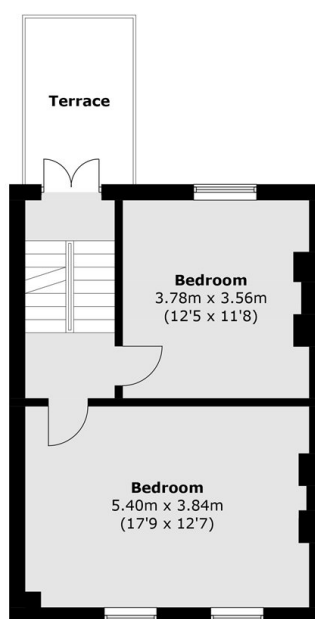
# Cecilia Road, London, E8



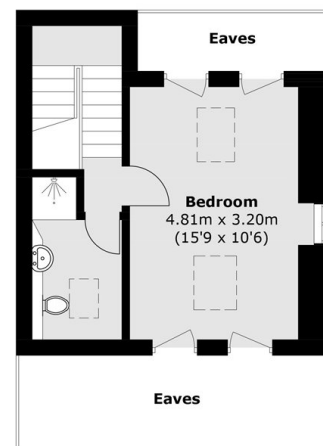
**Lower Ground Floor**



**Raised Ground Floor**



**First Floor**



**Second Floor**

Approx Internal Area: 166.2 sq. m (1,789 sq. ft)  
(Excluding Eaves)

External WC: 1.0 sq. m (11.0 sq. ft)

Total: 167.2 sq. m (1,800 sq. ft)

Terrace: 6.5 sq. m (70.0 sq. ft)