



Parc Wenallt, £140,000

- Ideal family home
- Driveway with EV Charging
- Rear garden
- Cul-de-sac location
- Close to local amenities
- Great transport links
- EPC Rating: C



 3
  1
  1



About the property

This three-bedroom end of terrace house is available for sale in Parc Wenallt, Treharris. The property features one reception room, a dedicated kitchen with access to the garden, and parking including electric vehicle charging.

The house is positioned within a residential area that offers access to several local amenities. Within Treharris, residents can enjoy proximity to local shops on the High Street, community cafés, and the Treharris Library. There are also primary and secondary schools within the surrounding area, making this property suitable for families.

For those who appreciate time outdoors, the property benefits from nearby walking routes and green spaces such as Parc Taf Bargoed. The park provides walking trails, play areas, and space for leisure activities.

Public transport links are accessible via Treharris railway station, which offers services to Cardiff Central, Merthyr Tydfil, and other destinations. Typical journey times to Cardiff Central are under 50 minutes, providing convenient commuter access. Local bus routes also serve the area, connecting Treharris to surrounding towns and the wider Merthyr Tydfil borough.



Accommodation

Hallway

Living Room

13' 5" x 12' 10" Max (4.09m x 3.91m Max)

Kitchen

9' 1" x 16' 3" (2.77m x 4.95m)

Landing

Bedroom 1

12' 7" x 8' 9" Max (3.84m x 2.67m Max)

Bedroom 2

9' 8" x 9' 9" (2.95m x 2.97m)

Bedroom 3

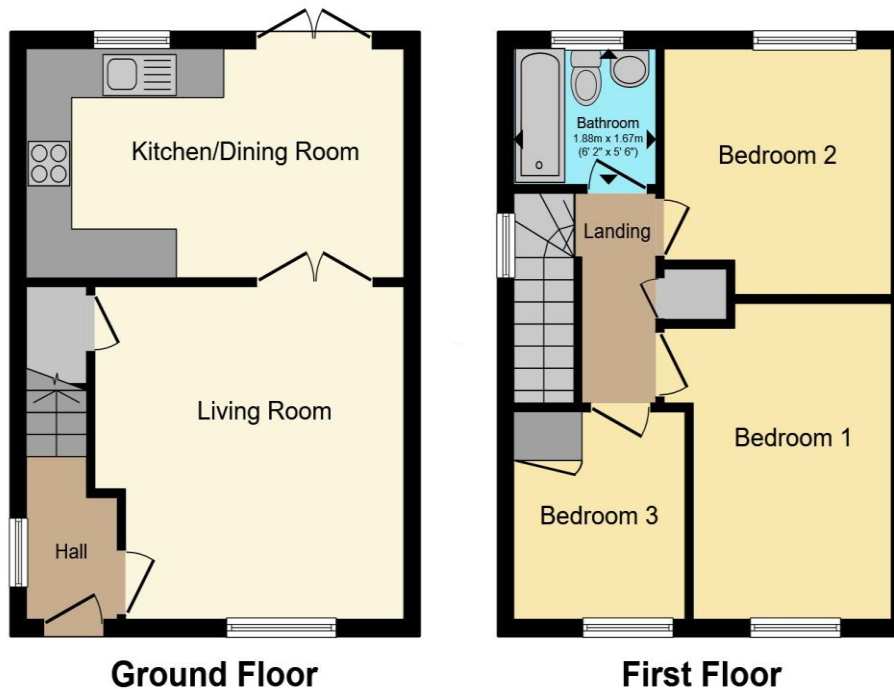
8' 4" Into door recess x 7' 2" (2.54m Into door
recess x 2.18m)

Bathroom

01685 722223

merthytydfil@peteralan.co.uk

Floorplan



Total floor area 69.8 m² (751 sq.ft.) approx

This floor plan is for illustrative purposes only. It is not drawn to scale. Any measurements, floor areas (including any total floor area), openings and orientation are approximate. No details are guaranteed, they cannot be relied upon for any purpose and they do not form part of any agreement. No liability is taken for any error, omission or misstatement. A party must rely upon its own inspection(s). Powered by www.propertybox.io



Important Information

Note while we endeavour to make our sales details accurate and reliable, if there is any point which is of particular interest to you, please contact the office and we will be pleased to confirm the position for you. We have not personally tested any apparatus, equipment, fixtures, fittings or services and cannot verify they are in working order or fit for their purposes. Nothing in these particulars is intended to indicate that carpets or curtains, furnishings or fittings, electrical goods (whether wired or not). Gas fires or light fittings or any other fixtures not expressly included form part of the property offered for sale. This computer generated Floorplan, if applicable, is intended as a general guide to the layout and design of the property. It is not to scale and should not be relied upon for dimensions. Tenure: We cannot confirm the tenure of the property as we have not had access to the legal documents. The buyer is advised to obtain verification from their solicitor or surveyor.

Peter Alan Limited is registered in England and Wales under company number 2073153, Registered Office is Cumbria House, 16-20 Hockliffe Street, Leighton Buzzard, Bedfordshire, LU7 1GN. VAT Registration Number is 500 2481 05. For activities relating to regulated mortgages and non-investment insurance contracts, Peter Alan Limited is an appointed representative of Connells Limited which is authorised and regulated by the Financial Conduct Authority. Connells Limited's Financial Services Register number is 302221. Most buy-to-let

