

Boardwalk

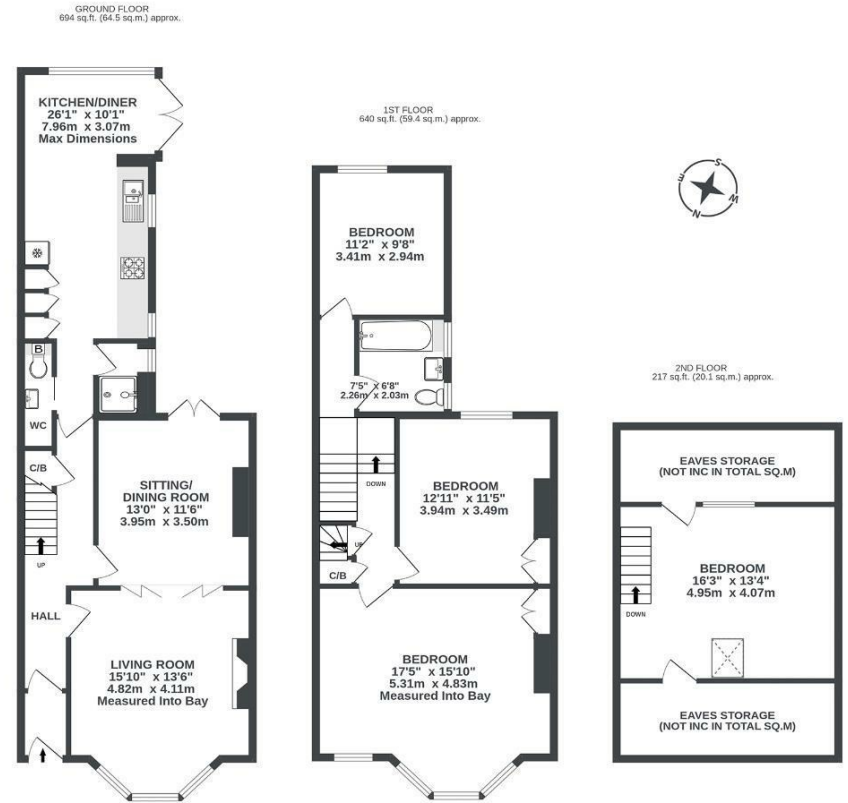
Haverstock Road

, BRISTOL

Haverstock Road

KNOWLE

APPROXIMATE FLOOR AREA
144.1 SQM / 1551 SQFT



Boardwalk

Haverstock Road

, BRISTOL

£

£700,000



BS4 2DA

zZz

4 Bedrooms



2 Bathrooms



"This is a really happy house in a relaxed community - the perfect place to bring up our two children. It's been great for all of us to be so close to town, whether it's Temple Meads for work, to get to school or to go out and enjoy the city. It's super easy to pop out for milk or a drink! And we're on a hill too, with the wonderful Perrett's Park and its brilliant views at the end of the street. Everyone is lovely, with families of all ages and all generations living here. You feel safe."

