



**Wetherby Close, Kimberley Nottingham NG16 2TZ**



**welcome to**  
**Wetherby Close, Kimberley**  
**Nottingham**

- FOUR BEDROOMS
- DETACHED FAMILY HOME
- DETACHED GARAGE
- DRIVEWAY
- CUL DE SAC LOCATION

Tenure: Freehold EPC Rating: Awaited  
Council Tax Band: E

**£340,000**

**view this property online** [williamhbrown.co.uk/Property/KBY109927](http://williamhbrown.co.uk/Property/KBY109927)



**Property Ref:**  
KBY109927 - 0002

1. MONEY LAUNDERING REGULATIONS Intending purchasers will be asked to produce identification documentation at a later stage and we would ask for your co-operation in order that there is no delay in agreeing the sale. 2. These particulars do not constitute part or all of an offer or contract. 3. The measurements indicated are supplied for guidance only and as such must be considered incorrect. Potential buyers are advised to recheck measurements before committing to any expense. 4. We have not tested any apparatus, equipment, fixtures or services and it is in the buyers interest to check the working condition of any appliances. 5. Where an EPC, or a Home Report (Scotland only) is held for this property, it is available for inspection at the branch by appointment. If you require a printed version of a Home Report, you will need to pay a reasonable production charge reflecting printing and other costs. 6. We are not able to offer an opinion either written or verbal on the content of these reports and this must be obtained from your legal representative. 7. Whilst we take care in preparing these reports, a buyer should ensure that his/her legal representative confirms as soon as possible all matters relating to title including the extent and boundaries of the property and other important matters before exchange of contracts.

William H Brown is a trading name of Sequence (UK) Limited which is registered in England and Wales under company number 4268443, Registered Office is Cumbria House, 16-20 Hockliffe Street, Leighton Buzzard, Bedfordshire, LU7 1GN. VAT Registration Number is 500 2481 05.

**Entrance Hallway**  
**Living Room**

19' 8" max x 12' max ( 5.99m max x 3.66m max )

**Kitchen**

10' 8" max x 10' 4" max ( 3.25m max x 3.15m max )

**Dining Room**

12' 10" max x 9' 1" max ( 3.91m max x 2.77m max )

**Bedroom One**

12' 2" max x 10' 2" max ( 3.71m max x 3.10m max )

**Bedroom Two**

13' max x 7' 3" max ( 3.96m max x 2.21m max )

**Bedroom Three**

12' 2" max x 10' 9" max ( 3.71m max x 3.28m max )

**Bedroom Four**

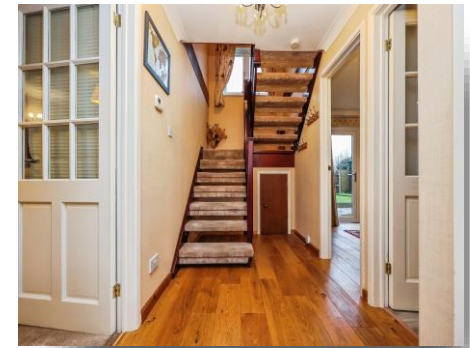
10' 5" max x 7' 3" max ( 3.17m max x 2.21m max )

**Family Bathroom**

Four piece suite

**Garage**

16' 5" max x 7' 3" max ( 5.00m max x 2.21m max )



**william h brown**



**0115 938 5062**



[kimberley@williamhbrown.co.uk](mailto:kimberley@williamhbrown.co.uk)



39 Main Street, Kimberley, NOTTINGHAM,  
Nottinghamshire, NG16 2NG



**[williamhbrown.co.uk](http://williamhbrown.co.uk)**