

Rolfe East



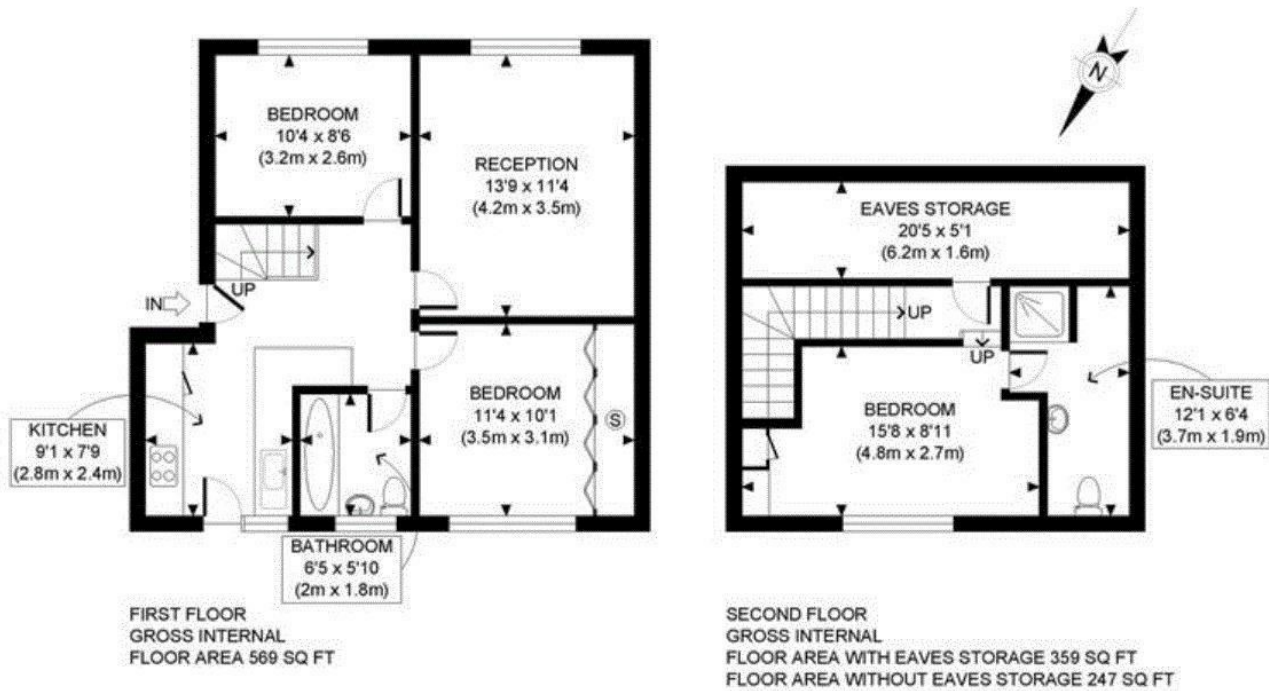
Pitshanger Lane, W5

£2,500 pcm

- Pitshanger Village
- Two Bathrooms (One En-Suite)
- Good Transport Links Nearby
- Duplex Apartment
- First and Second Floor
- Three Bedrooms
- Close to Local Amenities

44 Pitshanger Lane, Ealing, W5 1QY
020 8840 7707

ealinglettings@rolfe-east.com
<https://www.rolfe-east.com/>



APPROX. GROSS INTERNAL FLOOR AREA WITH EAVES STORAGE: 928 SQ FT/ 86 SQM
 APPROX. GROSS INTERNAL FLOOR AREA WITHOUT EAVES STORAGE: 816 SQ FT/ 76 SQM

PROPERTY PHOTO PLANS.COUK
 ONE STOP SHOP FOR PROPERTY MARKETING

This plan is for illustrative purposes only and should be used as such by any prospective client. Whilst every attempt has been made to ensure the accuracy of the Floor Plan contained here, measurements of the doors, windows, rooms and any other items are approximate and no responsibility is taken for any errors, omissions, or misstatement. The services, systems and appliances shown have not been tested and no guarantee as to the operability or efficiency can be given.

Viewings

Viewings by arrangement only.
 Call 020 8840 7707 to make an appointment.

Council Tax Band

E

EPC Rating:

D

Energy Efficiency Rating		Current	Potential
Very energy efficient - lower running costs			
(92 plus) A			
(81-91) B			
(69-80) C			
(55-68) D		63	70
(39-54) E			
(21-38) F			
(1-20) G			
Not energy efficient - higher running costs			
England & Wales		EU Directive 2002/91/EC	