



Jordan fishwick

ALTRINCHAM
Albert Road East



Albert Road East, Altrincham, WA15 9AL

£2,750 PCM



The Property

*** AVAILABLE NOW *** Albert Road East Hale

Jordan Fishwick are delighted to bring to the rental market this newly renovated three double bedroom house in Hale. In brief the property comprises; entrance hallway, lounge with open fire place, kitchen/dining room with built in appliances and modern finish and door leading to cellar where there is adequate storage. To the first floor there are two double bedrooms and a four piece family bathroom suite with free standing bath and walk-in shower cubicle. To the second floor there is a large bedroom and three piece en-suite with free standing bath. The property also benefits from; off road parking, double glazing, gas central heating, EV charging point, finished to a modern standard and only a short walk from Hale Village and Hale Train Station. Offered on a unfurnished basis. Call now to view - 0161 929 9797

Directions

WA15 9AL



- THREE BEDROOMS
- TWO BATHROOMS
- MODERN INTERIOR
- OFF ROAD PARKING
- EV CHARGING POINT
- COUNCIL TAX BAND E
- EPC RATING - E

Postcode - WA15 9AL

EPC Rating - E

Floor Area - 1568.00 sq ft

Local Authority - TRAFFORD

Council Tax - E



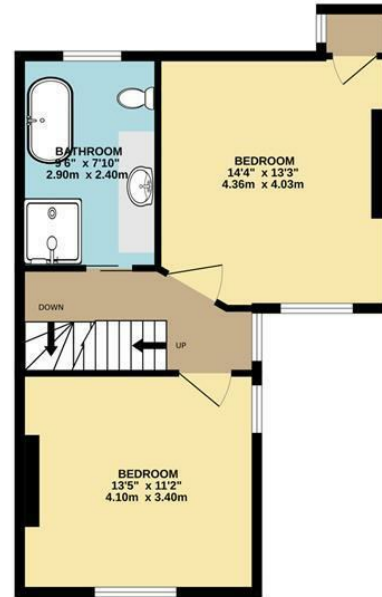
BASEMENT



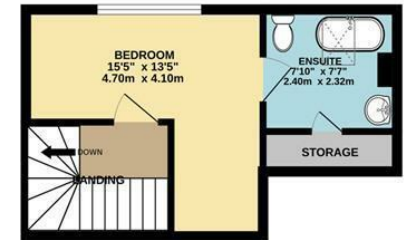
GROUND FLOOR



1ST FLOOR



2ND FLOOR



TOTAL FLOOR AREA : 1568sq.ft. (145.7 sq.m.) approx.

Whilst every attempt has been made to ensure the accuracy of the floorplan contained here, measurements of doors, windows, rooms and any other items are approximate and no responsibility is taken for any error, omission or mis-statement. This plan is for illustrative purposes only and should be used as such by any prospective purchaser. The services, systems and appliances shown have not been tested and no guarantee as to their operability or efficiency can be given.

Made with Metropix ©2025



These particulars are believed to be accurate but they are not guaranteed and do not form a contract. Neither Jordan Fishwick nor the vendor or lessor accept any responsibility in respect of these particulars, which are not intended to be statements or representations of fact and any intending purchaser or lessee must satisfy himself by inspection or otherwise as to the correctness of each of the statements contained in these particulars. Any floorplans on this brochure are for illustrative purposes only and are not necessarily to scale.

Offices at: Chorlton, Didsbury, Disley, Hale, Glossop, Macclesfield, Manchester Deansgate, Manchester Whitworth Street, New Mills, Sale, Wilmslow and Withington

01619291994

halemanagement@jordanfishwick.co.uk

www.jordanfishwick.co.uk