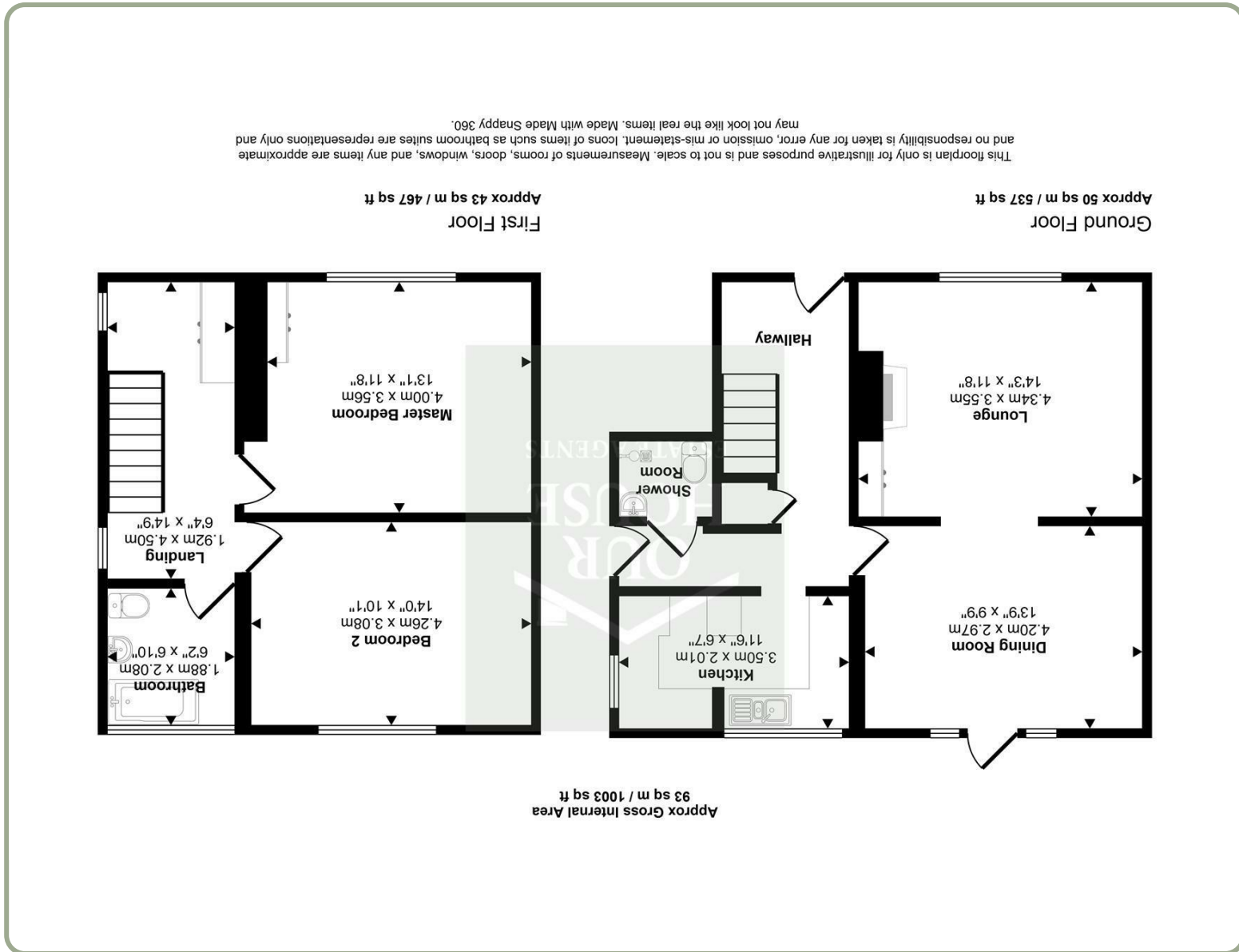
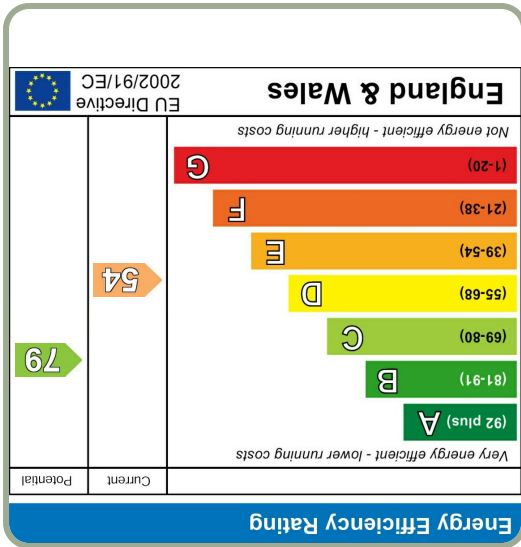


These particulars, whilst believed to be accurate are set out as a general outline only for guidance and do not constitute any part of an offer or contract. Intending purchasers should not rely on them as statements of representation of fact, but must satisfy themselves by inspection or otherwise as to their accuracy. No person in this firm's employment has the authority to make or give any representation or warranty in respect of the property.

Please contact our Our House Estate Agents Office on 01964 532121 if you wish to arrange a viewing appointment for this property or require further information.

Viewing



Our House Estate Agents

20 Newbegin Hornsea, East Yorkshire, HU18 1AL
 T. 01964 532121 | E. office@ourhouseestateagents.co.uk



Copperfields 10 Back Lane, Seaton, HU11 5SG
 £199,950

2 Bedrooms, 2 Bathrooms, 2 Living Areas, Energy Rating E

- Two Bedroom End Terrace Cottage • Two Bathrooms • South Facing Cottage Gardens • Driveway and Garage • Village Location • Paddock Views

Nestled in the heart of the pretty village of Seaton, this charming two-bedroom end-terrace cottage offers a wonderful opportunity to create a truly special home.

This exciting cottage has so much potential, allowing the next owner to put their own stamp on it and bring out its full character.

Inside, there are two inviting reception rooms, offering flexible living and dining spaces, along with the convenience of a ground floor shower room. Upstairs, you'll find two comfortable bedrooms, a family bathroom, and a generous landing area, previously used as a home office, perfect for modern living.

EPC: E
Council Tax: B
Tenure: Freehold

Outside is where this home really shines. The beautiful, good-sized south-facing cottage garden provides a peaceful and sunny retreat, ideal for relaxing or entertaining. There is also a gated side driveway leading to a detached garage, offering valuable off-road parking and storage.

With its appealing setting, lovely garden, and exciting potential, this cottage is a fantastic opportunity for buyers looking to create a home with personality in a desirable village location.



Entrance Hall

Wooden entrance door, staircase to first floor with understairs cupboard, tiled floor and radiator.

GF Wetroom

4'7" x 3'8"
Hand wash basin, W.C, shower with shower boarding to walls, heated towel rails.

Front Lounge

14'5" x 11'10"
Window to front, fireplace housing multi-fuel burner with tiled hearth and brick inset. Built in storage to sides. Vinyl flooring and radiator.

Dining Room

14'1" x 10'0"
Window to rear, doors to garden. Open plan to living room, vinyl flooring.

Kitchen

12'2" x 6'9"
Windows to side and rear, a range of fitted wall and base units with work surfaces, composite single drainer and bowl sink. Space and plumbing for washing machine. Space for freestanding oven, fridge and tumble drier.

Bedroom 2

14'0" x 10'2"
Window to the rear. Wooden floor and radiator.

Bathroom

6'9" x 6'5"
Window to the rear. W.C., hand wash basin and panelled bath. Heated towel rail, part tiled walls, tiled floor, heated towel rail and radiator.

Garden

Laid partly to lawn with paved areas, this is a pretty cottage garden that benefits from being south facing. There are planted borders and rockeries, along with an outside tap.

Garage

Detached garage accessed via long gated side drive.

