



Connells

Pilgrim Gardens
Grantham



Property Description

Connells are delighted to bring to the market this well-presented three-bedroom family home offering spacious and versatile accommodation arranged over two floors, ideal for modern living.

The ground floor comprises a welcoming entrance hallway with staircase rising to the first floor, a generous lounge with a bay window to the front of the property providing an excellent space for relaxation and entertaining, and a well-proportioned kitchen/diner offering ample room for dining. The kitchen is complemented by a separate utility room, providing additional storage and practicality. A convenient W.C completes the ground floor.

To the first floor, a central landing gives access to three well-sized bedrooms, making the property suitable for families or those requiring home office space. A four piece family bathroom completes the first floor.

Externally, To the front of the property is a gravelled parking area. A gate leading to the rear garden. To the rear there is an enclosed garden with a patio area, mainly laid to lawn with a variety of bushes and trees.

Viewings is highly recommended to fully appreciate this stunning home! Call Connells today 01476590050

Ground Floor

Entrance Hall

With doors leading to the lounge, kitchen/diner and W.C. Stairs leading to the first floor, radiator.

Downstairs W.C

Wash hand basin and W.C.

Lounge

With a bay window to the front, radiator.

Kitchen / Diner

With a window to the rear, French doors leading to the rear garden, doors leading to the hallway and the utility room. Range of wall and base units, extractor fan with integrated oven with hob below, microwave. Space and plumbing for dishwasher.

Utility Room

With a window to the rear, door leading to the rear, wall and base units, space and plumbing for washing machine.

First Floor

Landing

With doors leading to three bedrooms and the family bathroom.

Bedroom One

With windows to the front, radiator, built in triple wardrobe.

Bedroom Two

With a window to the rear, radiator, built in triple wardrobe.

Bedroom Three

With a window to the rear, radiator.

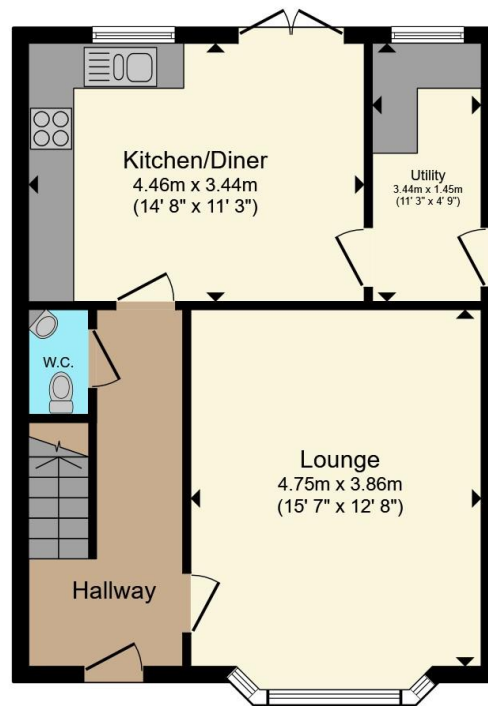
Bathroom

With a window to the rear, wash hand basin, W.C, bath, shower cubicle.

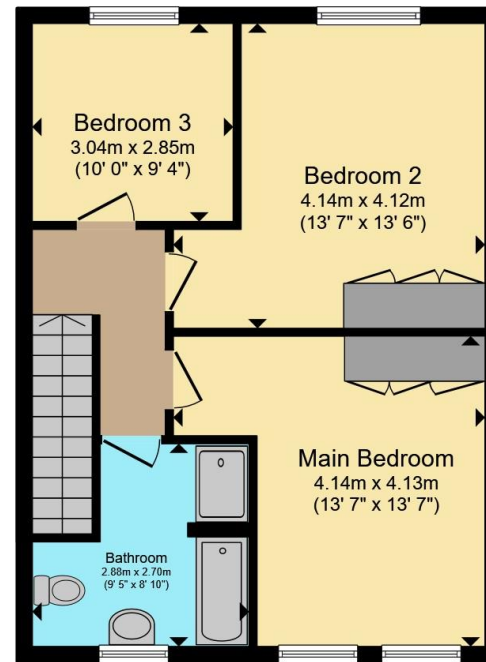








Ground Floor



First Floor

Total floor area 100.4 m² (1,081 sq.ft.) approx

This floor plan is for illustrative purposes only. It is not drawn to scale. Any measurements, floor areas (including any total floor area), openings and orientation are approximate. No details are guaranteed, they cannot be relied upon for any purpose and they do not form part of any agreement. No liability is taken for any error, omission or misstatement. A party must rely upon its own inspection(s). Powered by www.propertybox.io

Connells

To view this property please contact Connells on

T 01476 590 050
E grantham@connells.co.uk

2 Watergate
GRANTHAM NG31 6PR

EPC Rating: B Council Tax
Band: C

Tenure: Freehold

view this property online connells.co.uk/Property/GRM309367



1. MONEY LAUNDERING REGULATIONS Intending purchasers will be asked to produce identification documentation at a later stage and we would ask for your co-operation in order that there will be no delay in agreeing the sale. 2. These particulars do not constitute part or all of an offer or contract. 3. The measurements indicated are supplied for guidance only and as such must be considered incorrect. Potential buyers are advised to recheck measurements before committing to any expense. 4. We have not tested any apparatus, equipment, fixtures, fittings or services and it is in the buyers interest to check the working condition of any appliances.

Connells Residential is registered in England and Wales under company number 1489613, Registered Office is Cumbria House, 16-20 Hockliffe Street, Leighton Buzzard, Bedfordshire, LU7 1GN. VAT Registration Number is 500 2481 05.

See all our properties at www.connells.co.uk | www.rightmove.co.uk | www.zoopla.co.uk

Property Ref: GRM309367 - 0003