



jordan fishwick

WITHINGTON
Brigadier Close



Brigadier Close, Withington, M20 3BX

£240,000



The Property

A stylish, two bedroom, top floor flat forming part of a purpose built development on the boarder of Withington & West Didsbury, being a few minutes' walk to the Metrolink and local bars & shops on Burton Road. The flat is ideal for first time buyers and investors, with the living space including a communal entrance, L-shaped private hallway with storage space, spacious living/dining area with bay window, modern fitted kitchen with integrated appliances, large double bedroom with a built-in wardrobes, a second bedroom and the bathroom with a modern suite. The flat also enjoys access to attic space providing useful storage space, newly installed double glazing, modern electric heating and private residents parking completes the specification. No chain.

Directions

M20 3BX



- Two Double Bedrooms
- Top Floor Flat
- Short walk to Metro Station
- Great Location
- Hardwood flooring
- Modern electric heating and double glazing
- Private residents parking
- No chain

Postcode - M20 3BX

EPC Rating - D

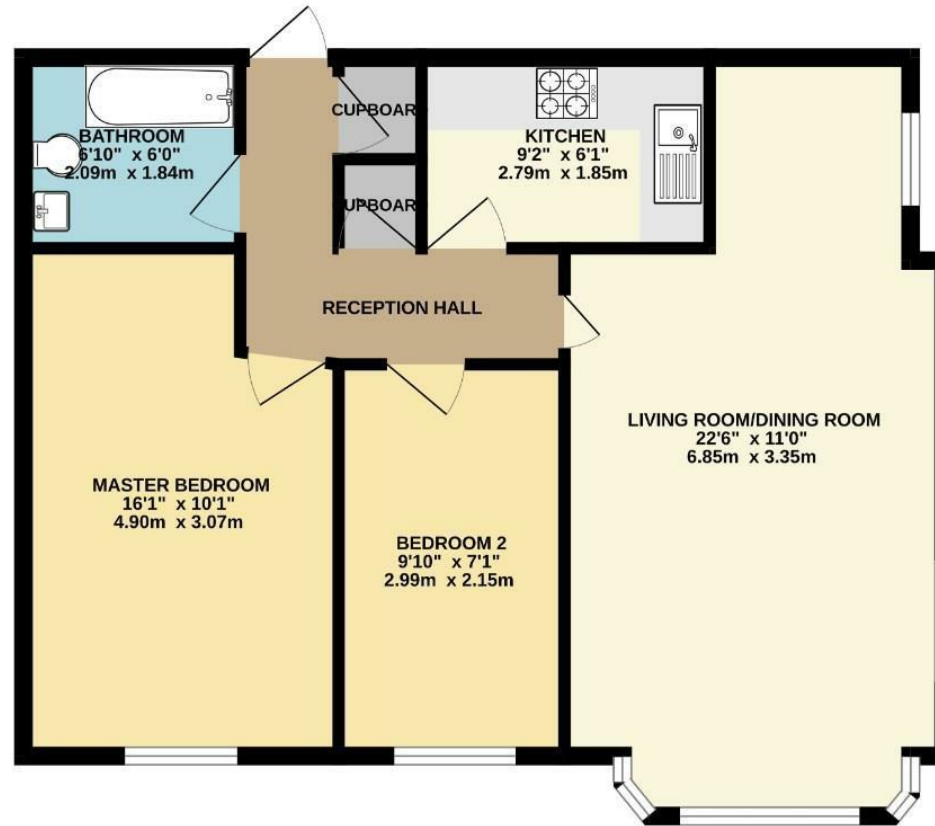
Floor Area - 654.00 sq ft

Local Authority - Manchester City Council

Council Tax - C



SECOND FLOOR
654 sq.ft. (60.8 sq.m.) approx.



TOTAL FLOOR AREA: 654 sq.ft. (60.8 sq.m.) approx.
Measurements are approximate. Not to scale. Illustrative purposes only.
Made with Metropix ©2025



These particulars are believed to be accurate but they are not guaranteed and do not form a contract. Neither Jordan Fishwick nor the vendor or lessor accept any responsibility in respect of these particulars, which are not intended to be statements or representations of fact and any intending purchaser or lessee must satisfy himself by inspection or otherwise as to the correctness of each of the statements contained in these particulars. Any floorplans on this brochure are for illustrative purposes only and are not necessarily to scale.

Offices also at: Wilmslow, Macclesfield, Hale, Sale, Chorlton, Glossop, Manchester & Salford

757-759 Wilmslow Road, Didsbury Village, Manchester

0161 445 4480

didsbury@jordanfishwick.co.uk
www.jordanfishwick.co.uk