

shepherds

A better home
moving experience



19 Clementsbury

Hertford, SG13 8FG

Guide Price £835,000



19 Clementsbury

Hertford, SG13 8FG

SOLD BY SHEPHERDS - Set within an exclusive gated development, this charming three-bedroom end of terrace mews-style home forms part of the highly sought-after Clementsbury estate - a beautiful conversion of former Edwardian stables, coach houses and farm buildings surrounded by open countryside, just two miles from Hertford.

The property offers well-presented accommodation throughout, combining period character with a warm, farmhouse feel. On entering, you are welcomed by a spacious hallway leading to a well-fitted farmhouse-style kitchen and a separate utility room, both finished to a high standard and in keeping with the property's heritage.

The impressive living and dining room is a real highlight, featuring vaulted ceilings, exposed beams and a striking brick fireplace with stove, creating a wonderful sense of space and character.

A long inner corridor leads to three double bedrooms, including a generous master bedroom with en-suite shower room and direct access to the private garden. The remaining bedrooms are well-proportioned and served by a family bathroom.

Outside, the property benefits from a private garden, a double garage, and additional parking for residents and visitors.

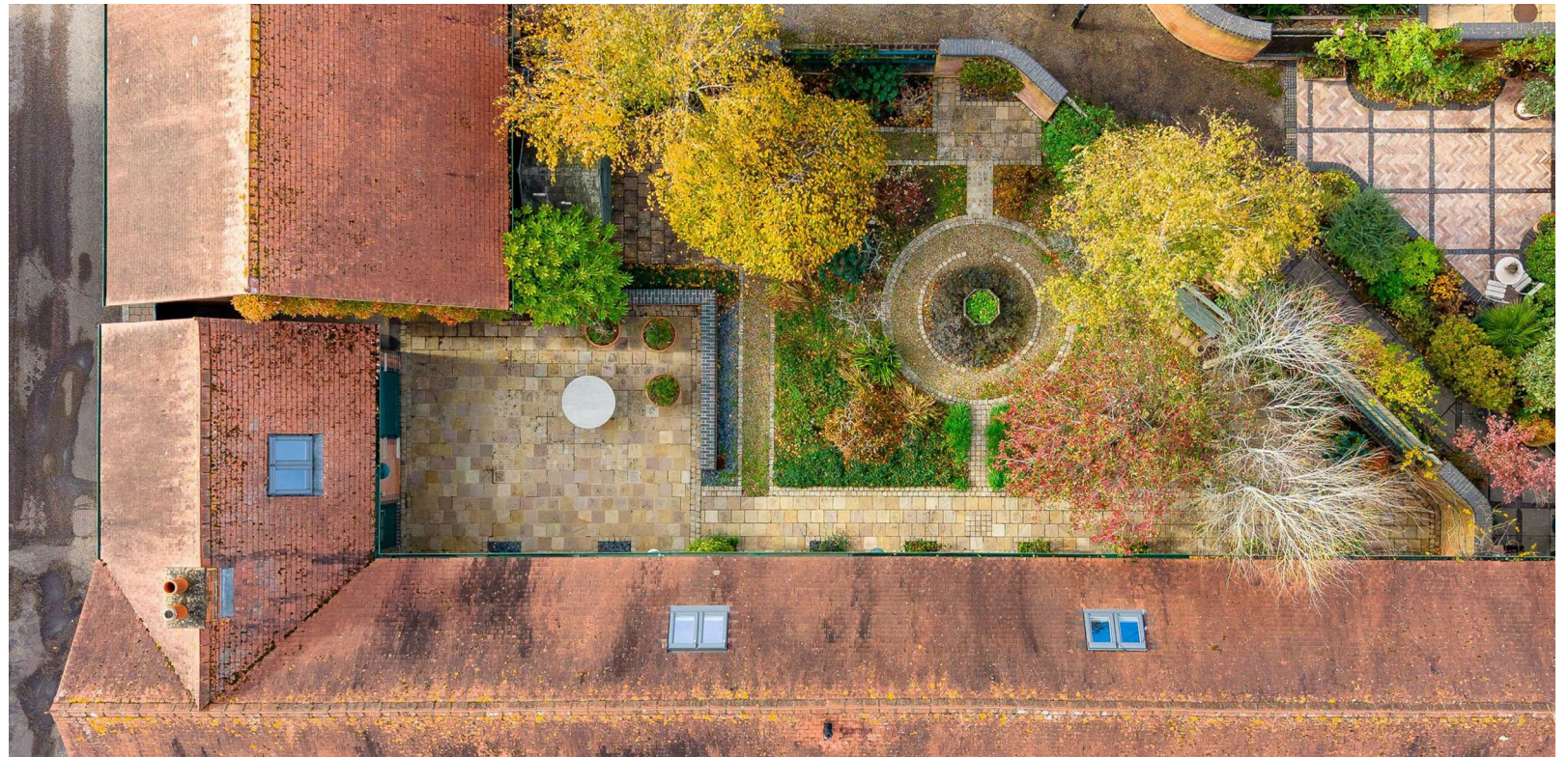
Clementsbury residents enjoy exclusive access to approximately 14 acres of the estate's beautifully maintained grounds, offering a peaceful rural lifestyle with plenty of open space to enjoy.

This is an ideal home for those seeking a secure, countryside setting with easy access to Hertford's excellent range of amenities, schools, and transport links.

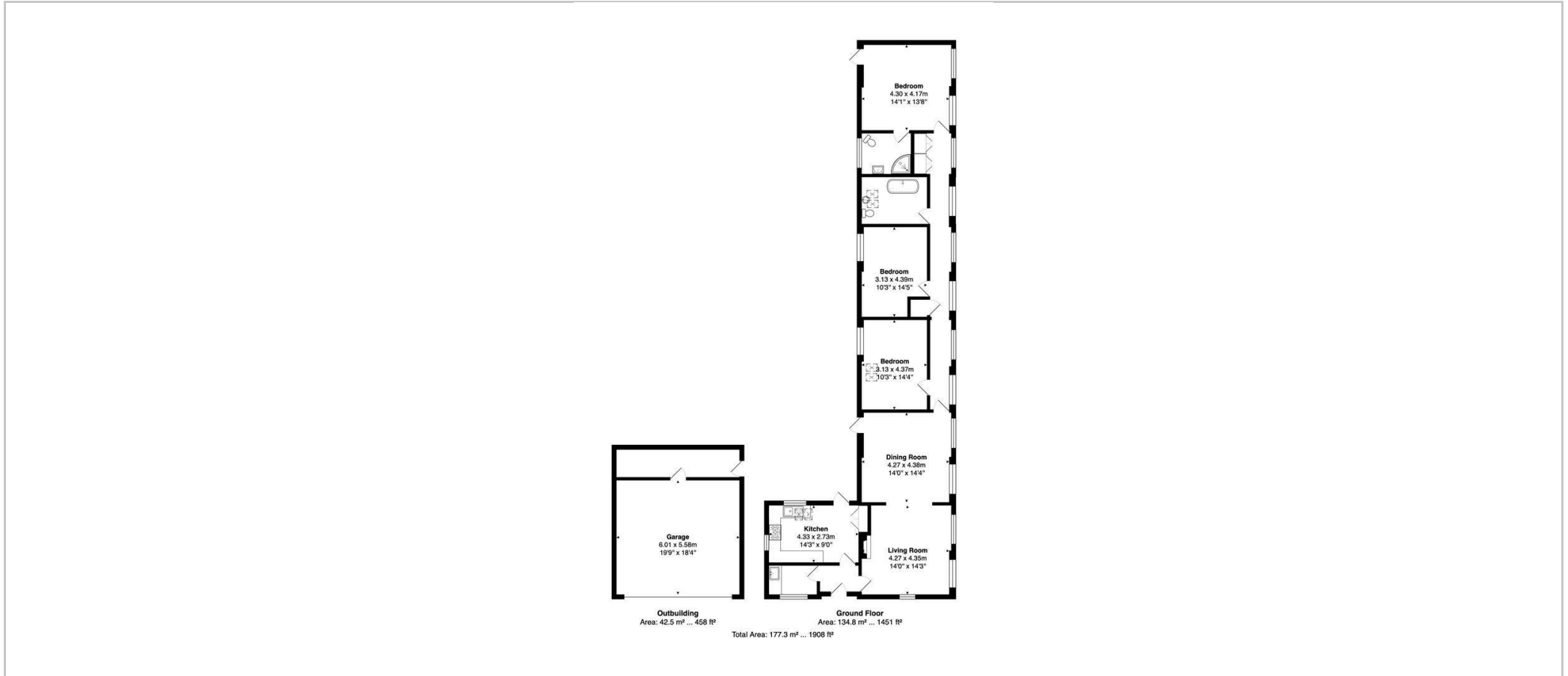




- Exclusive gated development within a stunning converted Edwardian estate.
- Three double bedrooms including a spacious master with en-suite.
- Impressive vaulted living and dining room with exposed beams and feature brick fireplace with stove.
- Attractive farmhouse-style kitchen and separate utility room, both beautifully presented.
- Private garden with direct access from the master bedroom.
- Double garage with additional residents' and visitors' parking.
- Access to approximately 14 acres of private estate grounds for residents to enjoy.
- Peaceful rural setting surrounded by open countryside.
- Within just two miles of Hertford town centre and its excellent amenities.
- Perfect for those seeking a secure, character-filled home offering countryside living with easy access to transport links.



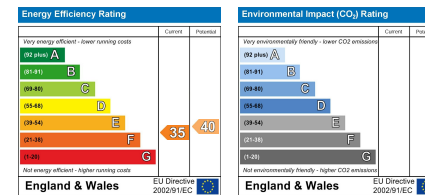
Floor Plan



Viewing

Please contact Shepherds of Hertford on 01992 551955 if you wish to arrange a viewing appointment for this property or require further information.

Energy Performance Graph



These particulars, whilst believed to be accurate are set out as a general outline only for guidance and do not constitute any part of an offer or contract. Intending purchasers should not rely on them as statements of representation of fact, but must satisfy themselves by inspection or otherwise as to their accuracy. No person in this firm's employment has the authority to make or give any representation or warranty in respect of the property.

Riverside House, 6 Millbridge, Hertford, SG14 1PY
Tel: 01992 551955 Email: enquiries@shepherdsfhertford.co.uk