

## Russell Road, W14

£750,000

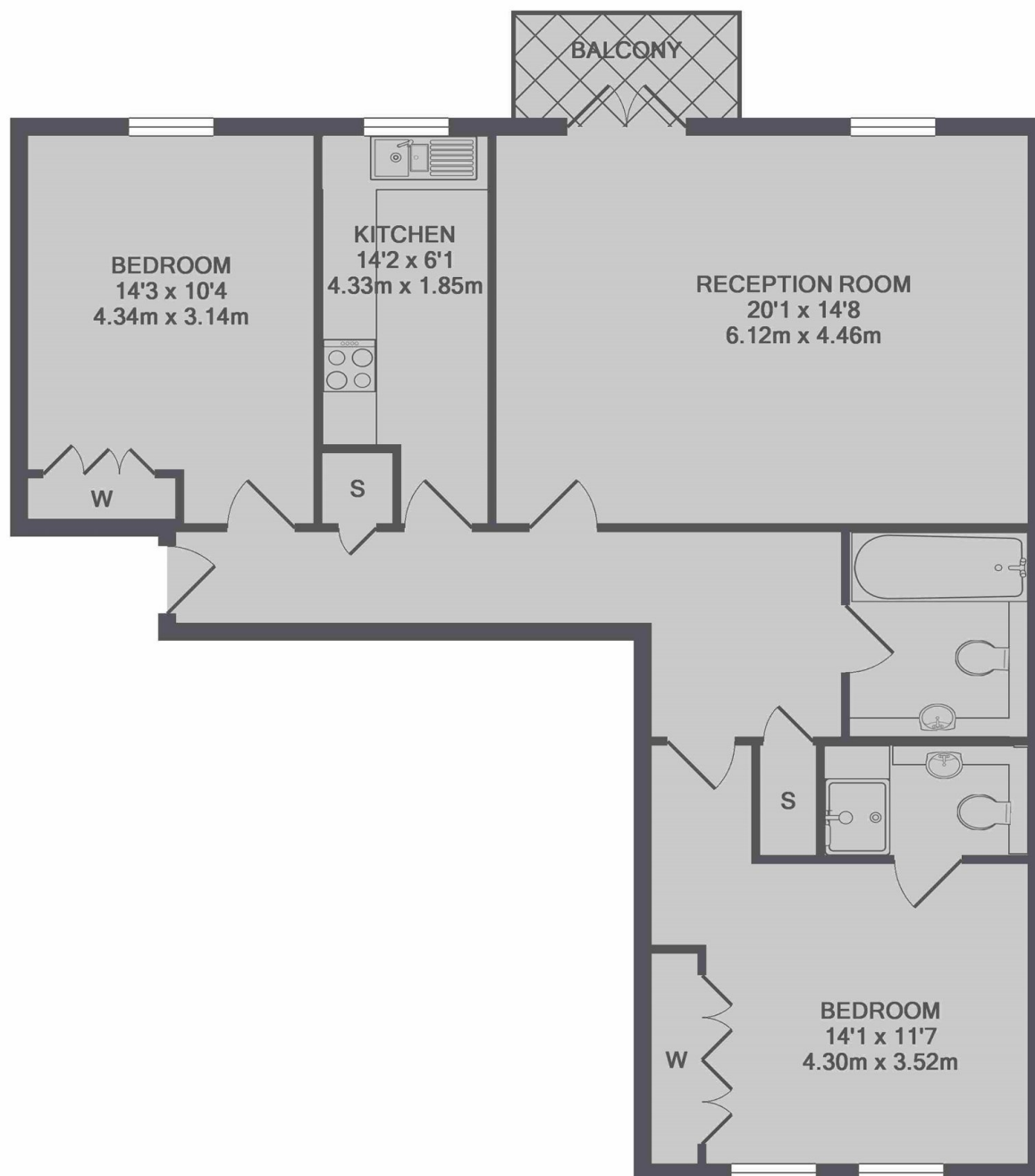
A spacious two double bedroom, two bathroom apartment in a purpose built building with a lift and underground parking. With room to dine and a Juliette balcony in the reception room, this is an ideal purchase for anyone that loves entertaining.

Russell Road is ideally located for all the shops restaurants and bars of Kensington High Street and offers easy access to Kensington Olympia Underground Station.

### Features

- Two Double Bedrooms
- Two Bathrooms
- Private Parking
- Private Balcony
- Communal Garden
- Lift

# Russell Road, London, W14



TOTAL APPROX. FLOOR AREA 952 SQ.FT. (88.4 SQ.M.)