



Guide Price
£425,000

Freehold

2x  1x  1x 

**Douglas Road,
Hornchurch, Essex,
RM11**

OVER 60?

Secure this property
for up to **59% less!**

 **DOUGLAS
ALLEN**
Helping you move forwards



Main features

- Character filled 1900's built cottage style home
- Utility area
- Beautiful mature garden
- Convenient for local schools
- Less than a mile to Romford Train Station (Elizabeth Line)

Accommodation

GROUND FLOOR

Hallway

Lounge: 14'4 into bay x 9'5 (4.37m x 2.87m)

Dining Area: 11'3 x 10'5 (3.43m x 3.18m)

Kitchen: 10'3 x 7'2 (3.13m x 2.19m)

Utility Area: 7'4 x 5'6 (2.24m x 1.68m)

FIRST FLOOR

Landing

Bedroom 1: 11'8 x 10'4 (3.56m x 3.15m)

Bedroom 2: 11'4 x 8'0 (3.46m x 2.44m)

Bathroom

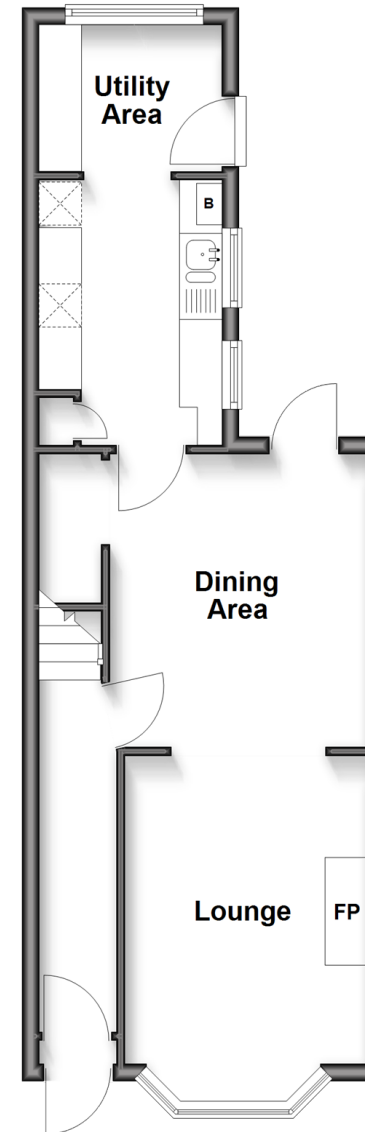
OUTSIDE

Front Garden

Rear Garden

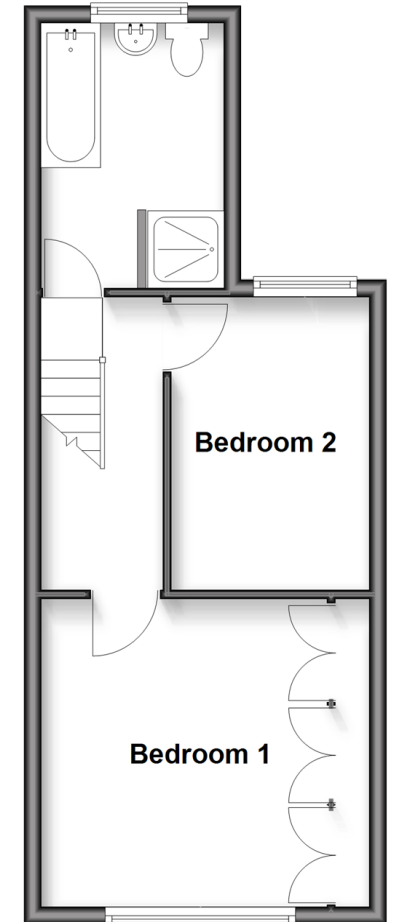
Ground Floor

Approx. 38.3 sq. metres (412.4 sq. feet)



First Floor

Approx. 34.4 sq. metres (370.2 sq. feet)



Call Hornchurch - 01708 437777 ■ douglasallen.co.uk

- A private rental licensing scheme applies to some properties in this area, please check with the Local Authority before proceeding
- Through a Homewise Home For Life Plan people aged 60+ can secure this property for up to 59% less, by purchasing a Lifetime Lease



51916130/20260411/CC1/DT