



GILMERTON CHURCH HOUSE, HIGHLAND ROAD, GILMERTON, CRIEFF, PH7 3NA



IrvingGeddes
W.S. • Solicitors • Estate Agents

GILMERTON CHURCH HOUSE, HIGHLAND ROAD, GILMERTON, PH7 3NA

A stunning church conversion in the charming village of Gilmerton, some 2mls east of the bustling town of Crieff. Beautifully presented following an extensive refurbishment, the property boasts particularly spacious & versatile accommodation in true move-in condition. Dating from 1869, converted in the late 1980's, the home extends to 380m2 and has a self-contained annex, private parking, and manageable landscaped gardens.

The flexible layout is set over two floors, the ground floor comprising; VESTIBULE, HALL with wood-burning stove and storage, STUDY, superb DINING KITCHEN, beautiful LOUNGE with garden access, a large public room currently utilised as a GYM, UTILITY ROOM and SHOWER ROOM. The annex has main door access but is also linked by an internal hall, and has a LOUNGE, BEDROOM, KITCHEN & BATHROOM. The upper floor has a large study landing with a stunning original window of stained-glass, a BATHROOM & FIVE DOUBLE BEDROOMS; the master is notable in size & features a striking original stained-glass wheel window, large DRESSING ROOM & EN-SUITE BATHROOM, and access to an extensive floored attic with Velux windows.

Fully enclosed low maintenance south-west facing gardens surround the house, with gravel beds, seating areas to enjoy all day sun, decked patio, turfed lawn, boules 'pitch', and ample private parking to the side & rear.

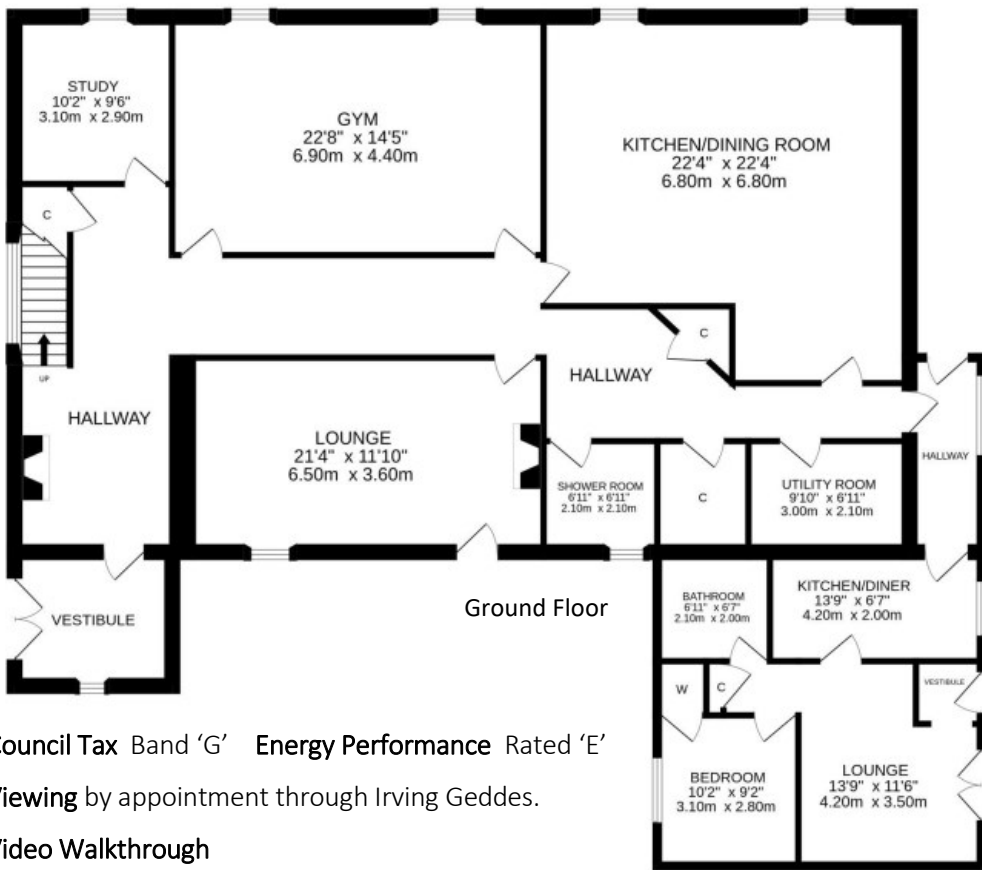
A quality family property of significant character with a hugely adaptable layout catering for modern living, entertaining, and working from home.







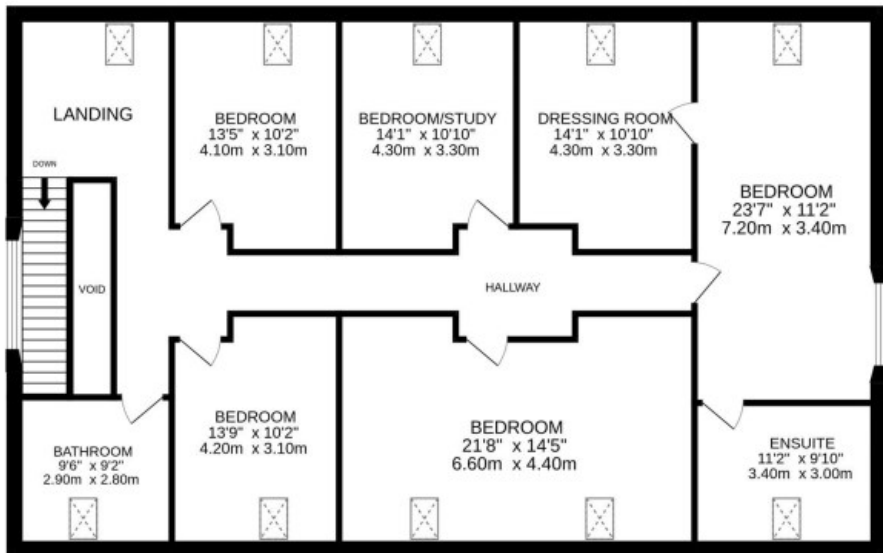




Council Tax Band 'G' Energy Performance Rated 'E'
Viewing by appointment through Irving Geddes.

Video Walkthrough
<https://my.matterport.com/show/?m=8ZMsm7UiZvD>

First Floor



These particulars are believed to be correct, but their accuracy is not guaranteed and they do not form part of any contract. All measurements are approximate only.



Crieff

25 West High Street, PH7 4AU
Tel: 01764 653771

Comrie

1 Drummond Street, PH6 2DW
Tel: 01764 670325

Aberfeldy

6 The Square, PH15 2DD
Tel: 01887 822722