 peter
alan

St. Bleddian Close, offers in excess of £220,000

- Beautifully Landscaped enclosed Rear Garden
- Master bedroom with En-Suite!
- Highly sought after location
- Off Road Parking
- No Onward Chain
- Immaculately presented
- Modern Kitchen
- EPC Rating: C



 peter
alan

 3  2  1

 peter
alan

01495 231199
blackwood@peteralan.co.uk



About the property

Situated in the highly sought-after residential area ,St Bleddian Close, this well maintained three bedroom semi-detached property offers an excellent opportunity for families, first-time buyers, or those looking to upsize in the popular village of Pontllanfraith.

The property is presented in good condition throughout and has been clearly cared for by the current owners, offering comfortable and versatile living accommodation ready for immediate occupation. Upon entering, you are welcomed into a bright and inviting hallway which leads through to the main reception room, providing a perfect space for relaxing or entertaining guests. The layout flows nicely into the modern kitchen area, which offers ample storage and workspace.

The first floor comprises three well-sized bedrooms and a family bathroom, with the principal bedroom further benefiting from its own en-suite.

Externally, the property continues to impress with off-road parking, providing convenient and secure



Accommodation

Ground Floor

Entrance Hall

Wc

Kitchen

Lounge

First Floor

Bedroom One

En-Suite

Bedroom Two

Bedroom Three

Bathroom

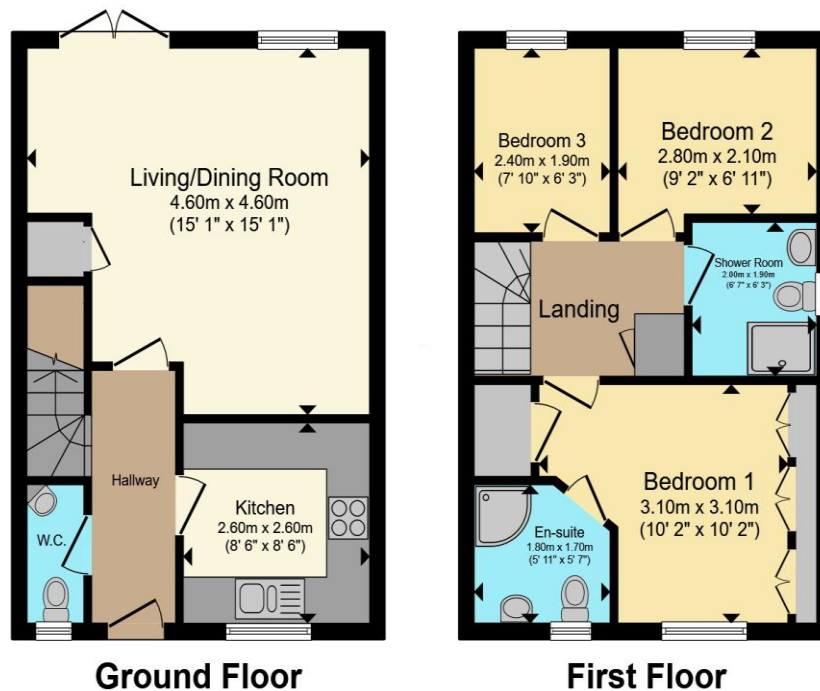
Rear Garden

Driveway

01495 231199

blackwood@peteralan.co.uk

Floorplan



Total floor area 71.3 m² (767 sq.ft.) approx

This floor plan is for illustrative purposes only. It is not drawn to scale. Any measurements, floor areas (including any total floor area), openings and orientation are approximate. No details are guaranteed, they cannot be relied upon for any purpose and they do not form part of any agreement. No liability is taken for any error, omission or misstatement. A party must rely upon its own inspection(s). Powered by www.propertybox.io



Important Information

Note while we endeavour to make our sales details accurate and reliable, if there is any point which is of particular interest to you, please contact the office and we will be pleased to confirm the position for you. We have not personally tested any apparatus, equipment, fixtures, fittings or services and cannot verify they are in working order or fit for their purposes. Nothing in these particulars is intended to indicate that carpets or curtains, furnishings or fittings, electrical goods (whether wired or not). Gas fires or light fittings or any other fixtures not expressly included form part of the property offered for sale. This computer generated Floorplan, if applicable, is intended as a general guide to the layout and design of the property. It is not to scale and should not be relied upon for dimensions. Tenure: We cannot confirm the tenure of the property as we have not had access to the legal documents. The buyer is advised to obtain verification from their solicitor or surveyor.

Peter Alan Limited is registered in England and Wales under company number 2073153, Registered Office is Cumbria House, 16-20 Hockliffe Street, Leighton Buzzard, Bedfordshire, LU7 1GN. VAT Registration Number is 500 2481 05. For activities relating to regulated mortgages and non-investment insurance contracts, Peter Alan Limited is an appointed representative of Connells Limited which is authorised and regulated by the Financial Conduct Authority. Connells Limited's Financial Services Register number is 302221. Most buy-to-let

