



homeworks
estate agent



54 Swaffham Road
Dereham, NR19 2DL

☎ (01362) 65 44 44
✉ sales@homeworks-uk.com
🌐 www.homeworks-uk.com

Jessopp Close, Scarning, Dereham, NR19 2PZ

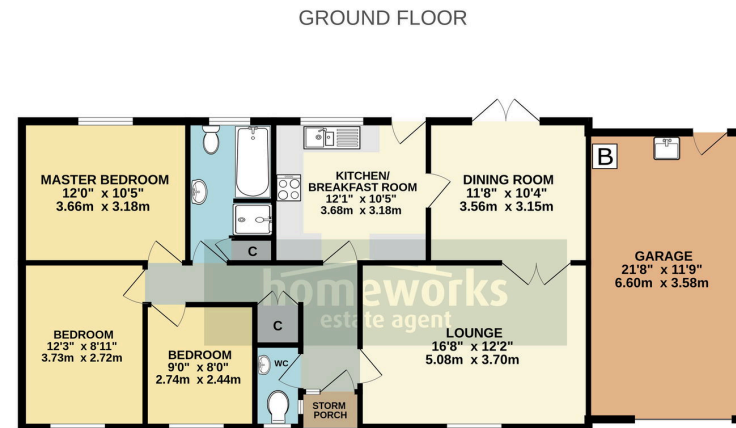
Offers In Region Of £325,000

3 1 2



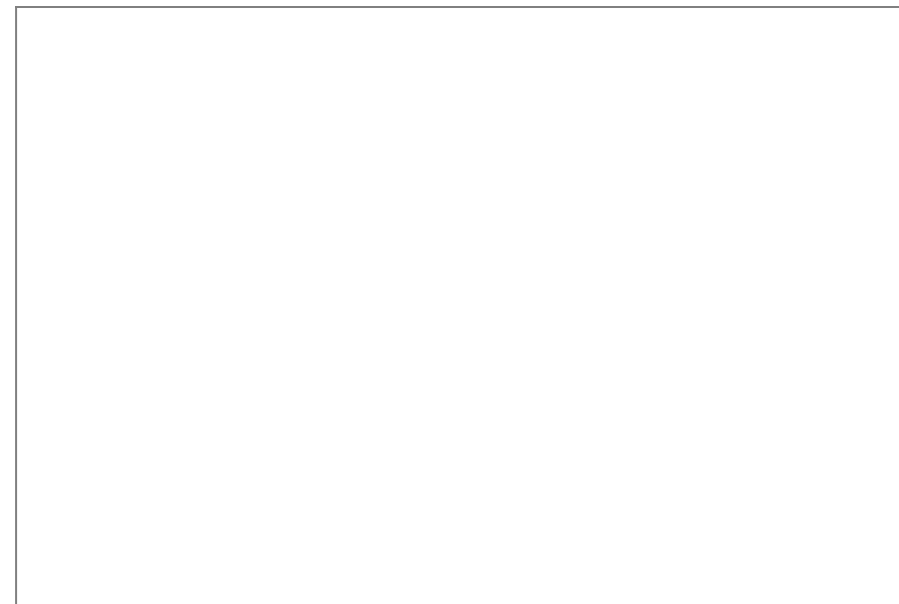
- DETACHED BUNGALOW OFFERED WITH NO ONWARD CHAIN
- 16'7 LOUNGE
- SEPARATE 11'4 DINING ROOM
- ENCLOSED REAR GARDEN ENJOYING FIELD VIEWS
- LOVELY VILLAGE LOCATION
- THREE BEDROOMS
- 12'1 KITCHEN/BREAKFAST ROOM
- SHOWER ROOM PLUS SEPARATE W.C.
- DRIVEWAY PARKING & OVERSIZED GARAGE
- EARLY VIEWING IS STRONGLY ADVISED





While every attempt has been made to ensure the accuracy of the floorplan contained here, measurements of doors, windows, rooms and any other items are approximate and no responsibility is taken for any error or misstatement. This plan is for illustrative purposes only and should be used as such by any prospective purchaser. The services, systems and appliances shown have not been tested and no guarantee is to be made regarding their efficiency or condition.
Made with Metreplex ©2025

**** VILLAGE LOCATION WITH NO ONWARD CHAIN ** CALL US TODAY TO ARRANGE YOUR VIEWING ON THIS DETACHED BUNGALOW IN AN ATTRACTIVE SETTING. WITH THREE BEDROOMS | 16'7 LOUNGE | KITCHEN/BREAKFAST ROOM | SEPARATE DINING ROOM | SHOWER ROOM PLUS SEPARATE W.C. | PRIVATE & ENCLOSED REAR GARDEN ENJOYING FIELD VIEWS | OVERSIZED GARAGE & DRIVEWAY.**



C AMOS MNAEA Managing Director

VAT no. 185 328 683

