

DANIEL BREWER

51 High Street
Great Dunmow
Essex, CM6 1AE

Telephone • 01371 856585
Website • www.danielbrewer.co.uk
E-mail • info@danielbrewer.co.uk



Whilst every attempt has been made to ensure the accuracy of the floorplan contained here, measurements of doors, windows, rooms and any other items are approximate and no responsibility is taken for any error, omission or mis-statement. This plan is for illustrative purposes only and should be used as such by any prospective purchaser. The services, systems and appliances shown have not been tested and no guarantee as to their operability or efficiency can be given.
Made with Metroplan ©2021



Disclaimer

These particulars, whilst believed to be accurate are set out as a general outline only for guidance and do not constitute any part of an offer or contract. Intending purchasers should not rely on them as statements or representation of fact, but must satisfy themselves by inspection or otherwise as to their accuracy. We have not carried out a detailed survey nor tested the services, appliances and specific fittings. Room sizes should not be relied upon for carpets and furnishings. The measurements given are approximate. No person in this firm's employment has the authority to make or give any representation or warranty in respect of the property.

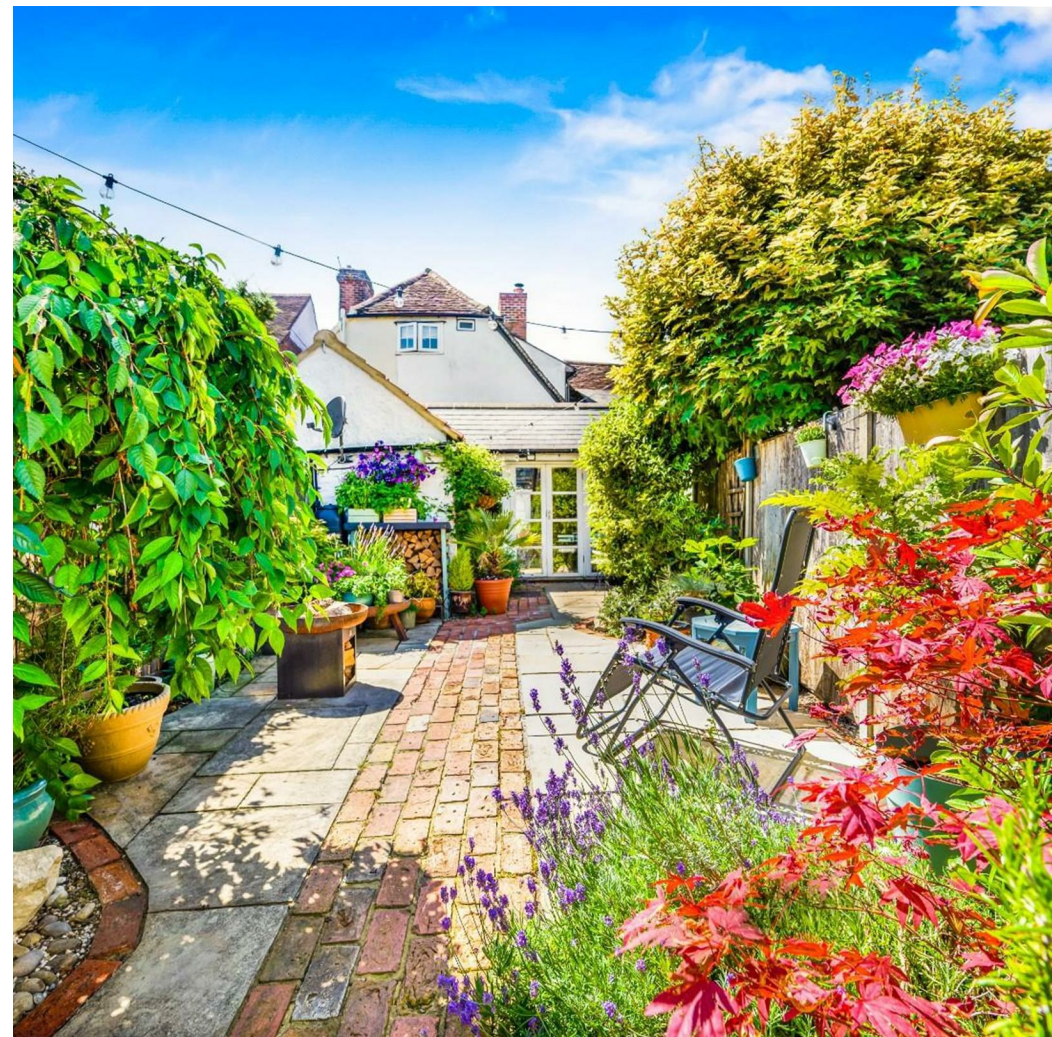
Daniel Brewer

51 High Street
Great Dunmow
Essex, CM6 1AE

Telephone • 01371 856585
Website • www.danielbrewer.co.uk
E-mail • info@danielbrewer.co.uk

**NEWBIGGEN STREET, THAXTED, DUNMOW, ESSEX,
CM6 2QR**

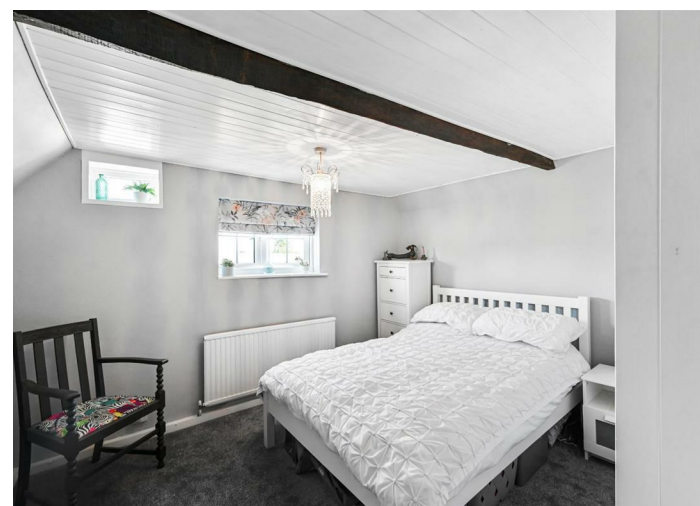
OFFERS OVER £450,000



**NEWBIGGEN STREET
THAXTED
DUNMOW
ESSEX
CM6 2QR**

Situated in the heart of the historic market town of Thaxted, this charming Grade II listed end of terrace townhouse offers beautifully proportioned accommodation arranged over three floors. The property features three generous double bedrooms and an abundance of character throughout. The well-appointed accommodation comprises a welcoming living room, elegant dining room, fitted kitchen, utility room, family bathroom, separate shower room, and a versatile basement currently used as a office/tv room. Outside, the property benefits from a private enclosed rear garden, ideal for outdoor entertaining and relaxation, together with the added advantage of a single garage. Combining period charm with spacious and versatile living, this delightful home occupies a prime central location within one of Essex's most picturesque and sought-after market towns.





Entrance Area

3'3" x 4'3" (1.0m x 1.3m) Entrance via partly glazed original timber door, access to electric utility cupboard, pine wood flooring, ceiling mounted light fixture.

Living Room

12'1" x 11'9" (3.7m x 3.6m) Single glazed window to front aspect with fitted shutters, pine wood flooring, original brick and tile fireplace, exposed timbers, wall mounted radiator with cover, wall mounted light fixtures, various power points.

Dining Room

12'9" x 11'5" (3.9m x 3.5m) Internal double glazed window to kitchen, carpeted flooring, original brick and tile fireplace, exposed timbers, wall mounted radiator, stairs to first floor, wall mounted light fixtures, various power points.

Kitchen

16'4" x 16'0" (5.0m x 4.9m)

Double glazed French doors and windows to rear aspect, two single glazed Velux windows, various base and eye level units with Quartz work surfaces over, one and half inset stainless steel sink with (boiling water) mixer tap and garbage disposal, four ring John Lewis induction hob with extractor fan over, integrated double AEG oven and grill with additional low level oven, integrated dishwasher, space for American style fridge/freezer; breakfast seating for three people, partly tiled walls, flagstone tile flooring, exposed timbers, access to large pantry / boiler cupboard, under floor heating, inset spotlights, feature lighting, various power points.

Utility Room

5'6" x 5'10" (1.7m x 1.8m) Various base and eye level units with timber work surfaces over, inset butler sink with mixer tap, space for washing machine and separate tumble dryer, underfloor heating, flagstone tile flooring, inset spotlights, various power points, extractor fan.

Shower Room

Three-piece suite comprising: low level WC, vanity wash hand basin with mixer tap, tile enclosed electric shower with sliding glass door; wall mounted heated towel rail, partly tiled walls, underfloor heating, flagstone tile flooring, inset spotlights, extractor fan.

Gardens

An enclosed rear garden is presented to the rear aspect, benefiting from a brick and flagstone paved sitting area with bordering hedgerows, flowerbeds and shrubs; all enclosed by wood panel privacy fencing.

Single Garage

With separate rear access, a terraced timber-built single garage with power and lighting is positioned to the rear of the garden. A boarded loft area grants additional space for storage or potential home office (subject to any necessary permissions required).

Town Summary

The Medieval market town of Thaxted is steeped in history and retains an abundance of character to this day. The town boasts three public houses, various restaurants, a bakery, petrol station and various independent shops. Some of the beautiful landmarks Thaxted has to offer include the stunning Guild Hall, Thaxted Parish Church, and John Webbs Windmill. Thaxted is approximately seven miles from the popular town of Saffron Walden and approximately six miles from the bustling market town of Great Dunmow.

- Three Double Bedrooms
- End Of Terrace Town House
- Grade II Listed Character Property
- Single Garage
- Enclosed Rear Garden
- Two Receptions
- Kitchen
- Shower Room & Bathroom
- Utility Room & Basement
- Walking Distance To Town Centre





Basement

17'4" x 8'6" (5.3m x 2.6m) Single glazed internal window / skylight, tiled flooring, wall mounted radiator, ceiling mounted light fixtures, various power points.

First Floor Landing

7'2" x 4'7" (2.18m x 1.40m)

Carpeted flooring, exposed timbers and brickwork, access to dressing room / walk-in wardrobe 2.2m x 1.4m (7'2" x 4'7"), stairs to second floor landing, ceiling mounted light fixture, various power points. Doors to: Family Bathroom and Bedroom Two.

Bedroom Two

11'5" x 11'1" (3.5m x 3.4m)

Single glazed window to rear aspect, original oak flooring, inbuilt wardrobing, wall mounted radiator, wall mounted light fixture, various power points

Family Bathroom

Frosted single glazed window to front aspect with fitted shutters, three-piece suite comprising: low level WC, vanity wash hand basin with mixer tap, and wood panel enclosed bath with pumped shower and glass splash screen; tiled flooring, under floor heating, partly tiled walls, wall mounted heated towel rail, inset spotlights, extractor fan.

Second Floor Landing

Carpeted flooring, exposed timbers, ceiling mounted light fixture, various power points. Doors to: Principal Bedroom and Bedroom Three.

Principal Bedroom

12'9" x 12'5" (3.9m x 3.8m) single glazed window to front aspect with fitted shutters, carpeted flooring, bespoke fitted wardrobing, wall mounted radiator, access to airing cupboard, wall mounted light fixture, various power points.

Bedroom Three

11'1" x 9'6" (3.4m x 2.9m) single glazed windows to rear aspect, carpeted flooring, over-stairs wardrobe space, wall mounted radiator, ceiling mounted light fixture, various power points.

