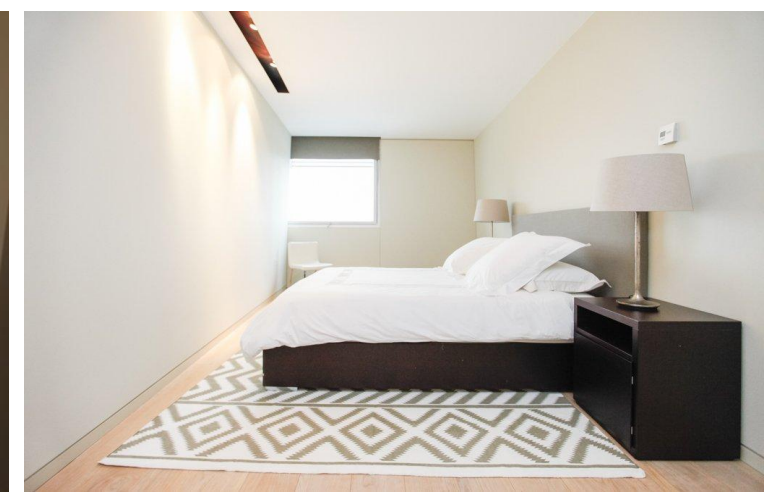




Albion Riverside  
8, SW11

CHESTERTONS





Stunning three-bedroom, three-bathroom apartment in this sought-after riverside development in Battersea with gorgeous river views over Albert Bridge. Finished to an exceptional standard with luxury furniture, comprised over 1900 sq. ft of excellently designed space, it features superb views of the River Thames and Albert Bridge from the reception room and principal bedroom, with a large open plan contemporary kitchen. Furthermore, there are three extensive bedrooms, three bathrooms with two en-suites and an additional family bathroom.

Further through the flat you will find a large utility room and ample storage and wardrobe space throughout. The apartment further benefits from two balconies and one secure underground car parking space.

Albion Riverside is positioned on the south bank of the Thames with excellent pedestrian access to Battersea Park, an increasing local amenity and lifestyle on the doorstep and easy access into Chelsea. The building offers an established and friendly 24-hour security/concierge team, well equipped gymnasium, large indoor swimming pool and a practical private resident's garden.

The property comes fully furnished with luxury furniture and one underground parking spot included.

- Private Balcony
- Three Bathrooms
- Direct River Views
- EPC Rating C

### £9,500 pcm

Additional tenant charges apply (fees apply to non-AST tenancies only)

Tenancy Agreement Fee: £300

References per Tenant/Guarantor: £60

Inventory check (approx. £100 – £250 inc. VAT)

[chestertons.co.uk/property-to-rent/applicable-fees](http://chestertons.co.uk/property-to-rent/applicable-fees)

Energy Efficiency Rating		Current	Potential
100-109	A		
81-100	B		
62-80	C	74	75
43-61	D		
25-42	E		
10-24	F		
1-9	G		

Not energy efficient - higher running costs

England, Scotland & Wales EU Directive 2002/91/EC

**Minimum Term:** 12 months  
**Deposit Required:** £13,153.85  
**Local Authority:** London Borough of Wandsworth  
**Council Tax Band:** H  
**EPC Rating:** C  
**Furnished**

### Chestertons Battersea Park & Nine Elms Lettings

62-64 Battersea Bridge Road  
 London  
 SW11 3AG  
[batterseapark@chestertons.co.uk](mailto:batterseapark@chestertons.co.uk)  
 02030408269  
[chestertons.co.uk](http://chestertons.co.uk)



Chesterton UK Services Limited trading as Chestertons for themselves and for the vendor of this property whose agents they are, give notice that (i) these particulars do not constitute any part of an offer or contract, (ii) all statements contained within these particulars are made without responsibility on the part of Chestertons or the vendor, (iii) whilst made in good faith, none of the statements contained within these particulars are to be relied upon as a statement or representation of fact, (iv) any intending purchasers must satisfy themselves by inspection or otherwise as to the correctness of each of the statements contained within these particulars, (v) the vendor does not make or give either Chestertons or any person in their employment any authority to make or give representation or warranty whatsoever in relation to this property. Wide angle lenses may be used. ©Copyright Chestertons | Chesterton Global Ltd | Registered Office 40 Connaught Street, Hyde Park, London W2 2AB Registered Company Number 05334580.



This paper is  
100% recyclable