



4



1



2



C





GUIDE PRICE - £625,000 - £675,000.

We are delighted to offer this stunning contemporary four-bedroom detached family home, beautifully maintained and finished to an exceptional standard throughout, situated in the highly sought-after Salvington district of Worthing.

This impressive property features a superb open-plan kitchen with central island, a dual-aspect lounge with bi-folding doors to a south-facing garden, and grey Karndean herringbone flooring throughout the ground floor, adding a stylish and practical touch. The luxurious master bedroom suite includes a separate dressing room and en-suite, alongside three further bedrooms, a high-specification family bathroom, a versatile study/snug/occasional fifth bedroom, and a detached timber garden studio. The property also benefits from off-road parking and excellent access to local amenities and the A27

Key Features

- Exceptional contemporary detached family home
- Stunning kitchen with central island and utility room
- Dual-aspect lounge with fireplace and bi-folding doors
- Master suite with dressing room and luxury en-suite
- Three further well-proportioned bedrooms
- Versatile study/occasional fifth bedroom
- Beautiful south-facing garden with Mediterranean planting
- Detached timber studio
- Off-road parking and excellent transport links
- Council Tax Band D

This stunning four-bedroom detached family home is finished to an exceptional standard throughout, combining style with practical family living.

The ground floor features a kitchen with a central island topped with a marble worktop that matches the marble surfaces across the rest of the kitchen, and an adjoining utility room, flowing into a bright dual-aspect lounge with a striking media wall featuring a contemporary fireplace with integrated TV recess, creating a stylish and cosy focal point to the living space. Five-panel bi-folding doors opening onto the south-facing garden, perfect for entertaining and everyday family life. A ground floor WC and a versatile study, which could also serve as a snug or occasional fifth bedroom, complete the accommodation.

The master bedroom suite includes a separate dressing room and a luxury en-suite with Carrera-effect tiles, elegant gold fittings, and twin basins. Upstairs are three further well proportioned bedrooms and a beautifully appointed family bathroom.

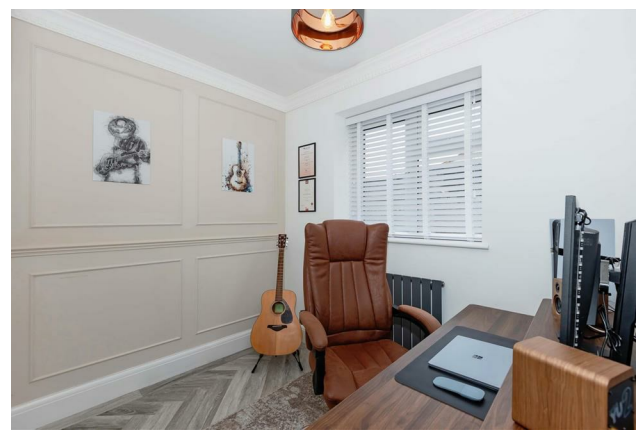
Outside, the south facing rear garden offers a raised patio, lawn, and a variety of mature plants including palm and olive trees, creating a Mediterranean feel. At the rear of the garden, a tucked away area, the "Secret Garden", houses a timber studio, providing space for home working, a gym, or creative use. Off-road parking is available at the front.



robertluff.co.uk

30 Guildbourne Centre, Worthing, West Sussex, BN11 1LZ | 01903 331247 | info@robertluff.co.uk

Robert
Luff & Co



robertluff.co.uk

30 Guildbourne Centre, Worthing, West Sussex, BN11 1LZ | 01903 331247 | info@robertluff.co.uk

Robert
Luff & Co



robertluff.co.uk

30 Guildbourne Centre, Worthing, West Sussex, BN11 1LZ | 01903 331247 | info@robertluff.co.uk

Robert
Luff & Co



robertluff.co.uk

30 Guildbourne Centre, Worthing, West Sussex, BN11 1LZ | 01903 331247 | info@robertluff.co.uk

Robert
Luff & Co

